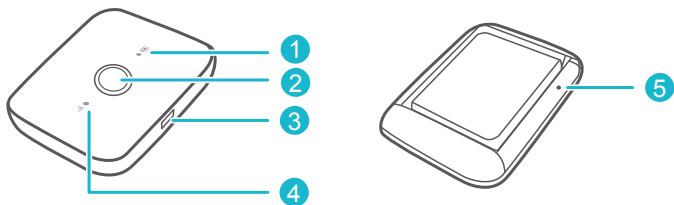


Quick Start

Appearance



1 Battery indicator

- Green: Sufficient battery.
- Blinking green: Charging the battery.
- Red: Low battery.

2 Power button

Press and hold to turn your Airtel 4G HotSpot on or off.


3 Micro USB port

4 Signal indicator

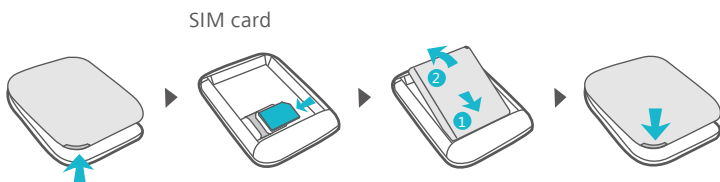
- Green: Connected to a 4G network.
- Yellow: Connected to a 3G network.
- Red: Connected to a 2G network.
- Blinking red: No signal or sim card is not recognized, etc.

5 RESET button

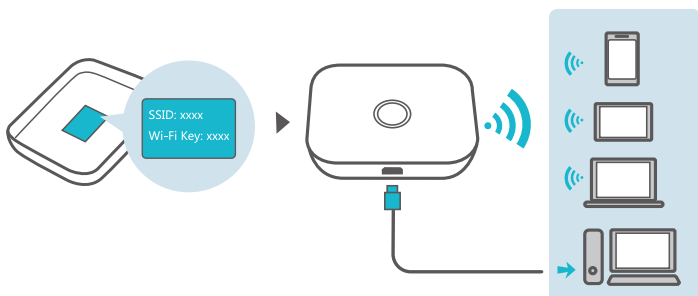
Press and hold to restart your Airtel 4G HotSpot and restore it to its factory settings.

 If you forget the username, password or SSID for your Airtel 4G HotSpot, try restoring the device to its factory settings.

Installation




Wi-Fi[®] connection



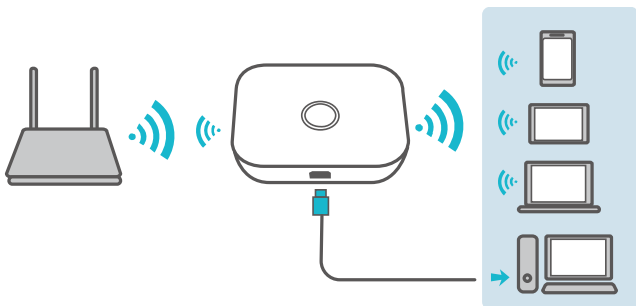
The default SSID (Wi-Fi network name) and Wi-Fi network key are printed on the Airtel 4G HotSpot label.

We strongly recommend that you change the default SSID and Wi-Fi key to keep your data secure.

 You can manage your Airtel 4G HotSpot through the web interface at **<http://192.168.1.1>**. The default username and password is **admin**.

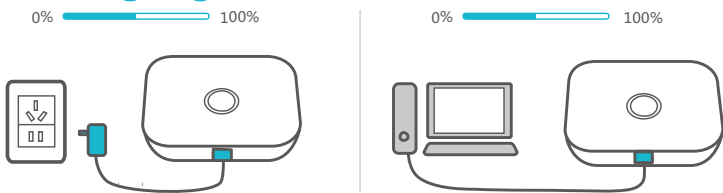
Click the online help on the web interface to learn more about your Airtel 4G HotSpot.

Wi-Fi extender (optional)




The Wi-Fi extender feature increases Wi-Fi coverage and connects to Wi-Fi networks where available to reduce mobile data usage.

Charging



Please only use compatible chargers provided by a designated manufacturer.


 The charger is an optional accessory. To buy a charger, please contact an authorized retailer.

Connecting to the Internet

Using an LTE, 3G, or 2G Network

The Airtel 4G HotSpot's management parameters have been preset according to your operator's requirements.

If data is transmitted, the Airtel 4G HotSpot will automatically connect to the Internet. If data is not transmitted for a period of time, the Airtel 4G HotSpot will automatically disconnect from the network connection.

 You can log in to the web management page and enable or disable the automatic dialing while roaming function. If this function is turned off, when the Airtel 4G HotSpot enters a roaming network, it will automatically disconnect from the Internet connection that has already been established. You will need to manually establish this network connection again.

Tips

Why isn't my Airtel 4G HotSpot responding?

Try restarting the device. If that doesn't work, restore the device to its factory settings.

Why can't I connect to my Airtel 4G HotSpot sometimes?

To save power, your Airtel 4G HotSpot's Wi-Fi auto off feature is designed to turn off Wi-Fi when there haven't been connections for a while. You can press the Power button to turn on Wi-Fi again. Alternatively, you can disable this feature, although this might impact battery life. Log in to the web interface and disable the Wi-Fi auto off feature.

Why won't my Airtel 4G HotSpot connect to a network even though all the settings are correct?

The PIN verification feature might be enabled.

You can disable this feature if you find entering the PIN regularly inconvenient.

Why can't I access the web interface at 192.168.1.1?

This is likely due to an IP address conflict when the Airtel 4G HotSpot assigns itself a new IP address. Please try 192.168.2.1 in this case.

Why won't my Airtel 4G HotSpot power on?

Your battery is probably out of power.

Charge your Airtel 4G HotSpot for a while and power it back on.

Why did my Airtel 4G HotSpot power off all of a sudden?

Your Airtel 4G HotSpot may overheat when you use it continuously over a long period of time, and thereby trigger its automated protection system. Wi-Fi will be turned off and your Airtel 4G HotSpot will power off if this occurs.

Please ensure the device is properly ventilated and cooled before you power it on again.

