

EPSON Projector Quick Start

Before using the projector, make sure you read the safety instructions in the online User's Guide.

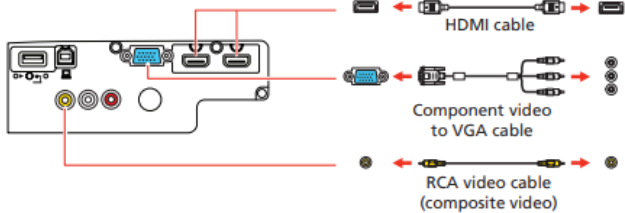
Fully unpack the projector as per the instruction's provided.

Please note: the illustrations and instruction on this sheet are generic and your specific products details and specifications may differ. For full install details please go to the on-line user guide as detailed in the supplied CD with your projector or go to www.epson.eu/support.

Connect the projector

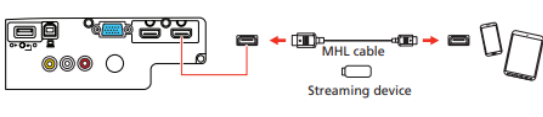
Video device

Connect multiple video devices and use the Source Search button on the projector or the remote control to switch between them.



Mobile media

Device (Home Cinema 1060) Connect tablets, smartphones, and other devices that support the MHL™ standard to the HDMI2/MHL port.



Connect audio

Built-in speaker

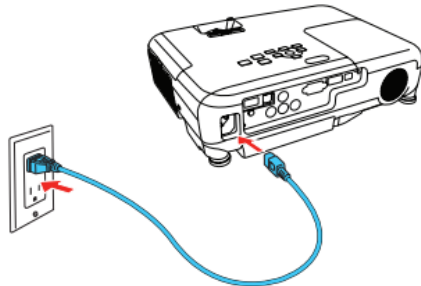
The projector has a built-in speaker that can play audio from a video source (DVD player, streaming device, etc.) connected by an HDMI cable. If you do not use an HDMI connection, you must connect your device's audio output to the projector's audio input.

External speakers

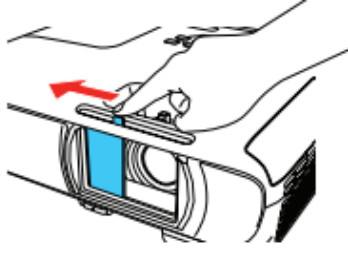
Connect your device's audio output to your home theater receiver or powered speakers. Note: The internal speaker is disabled when an external device is connected.

Turn on your equipment

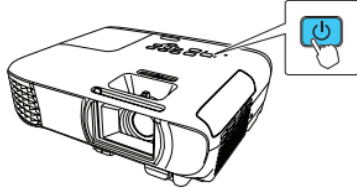
- 1 Turn on your video source or computer.
- 2 Plug in the projector. The power light on the projector turns blue.



- 3 Open the A/V Mute slide all the way.



- 4 Press the power button on the projector or remote control. The projector beeps, the Status light flashes blue, and then stays on.



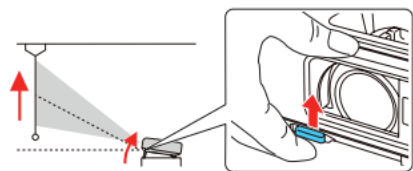
Note: To shut down the projector, press the power button twice.

- 5 Use the arrow buttons on the remote control to highlight any options on the Home screen that appears, then press to select it. You can switch between projection sources and quickly access various adjustment options from this screen.

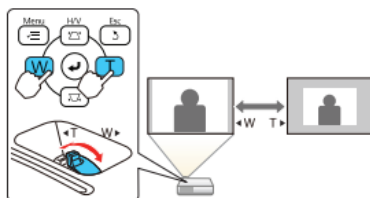


Adjust the image

- 1 To raise the image, press the foot release button and lift the front of the projector. Release the button to lock the foot in position.



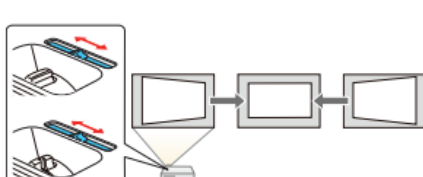
- 2 To reduce or enlarge the image, press the T (reduce) or W (enlarge) button on the projector or (depending on model) turn the zoom ring.



- 4 To sharpen the image, turn the focus ring.



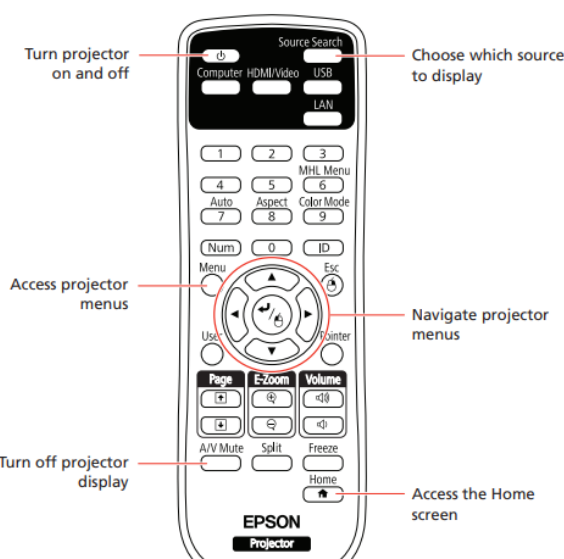
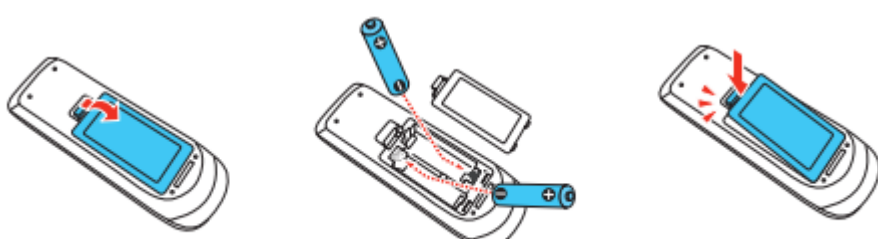
- 5 If your image looks like or you may have placed the projector off to one side the screen at an angle. Place the projector directly in front of the center of the screen, facing the screen squarely. If you can't move the projector, use the horizontal keystone slider on the projector to correct the image shape



- 6 Your projector automatically adjusts images that look like or , but if necessary you can press the or button on the projector to correct it.

Using the remote control

Install the batteries as shown (two AA batteries).



For more information on using the remote control, see the online User's Guide.

Troubleshooting

If you see a blank screen or the No signal message after turning on your computer or video device, check the following:

- Make sure the Status light on the projector is blue and not flashing, and the A/V Mute slide is open.
- Press the Source Search button on the projector or remote control to switch to the correct image source, if necessary.
- Press the Home button on the projector or remote control to verify the source input and settings.
- On Windows® 7 or later, hold down the Windows key and press P at the same time, then click Duplicate.
- If you're using a Windows laptop, press the function key on your keyboard that lets you display on an external monitor. It may be labeled CRT/LCD or have an icon such as . You may have to hold down the Fn key while pressing it (such as Fn + F7). Wait a moment for the display to appear.
- If you're using a Mac laptop, open System Preferences and select Displays. Click the Arrangement tab and select the Mirror Displays checkbox.

Where to get help

Manual

For more information about using the projector, click the icon on your desktop to access the online manual (requires an Internet connection). If you don't have a User's Guide icon, you can install it from the projector CD or go to the Epson website www.epson.co.uk/support

Call us

Talk to one of our advisors:

Home Users: 0343 90 37766.

Business Users: 0871 423 7766*

Please note this support is available from Monday to Friday from 9am to 6pm. We are closed for UK public holidays.

*Calls cost 10p per minute plus network extras.

For other Contact details including Online Chat and Email please go to www.epson.co.uk/contactus