

FAST ACTION ROUNDUP® PATH & DRIVE READY TO USE - 5 LITRES

NEW UP TO 10 MINUTES OF CONTROLLABLE SPRAY!

KILLS THE ROOTS SO WEEDS DON'T COME BACK

PUMP 'N GO PRESSURE SPRAYER

Total weedkiller

Degraded in soil by micro organisms

Use weedkillers safely. Always read the label.

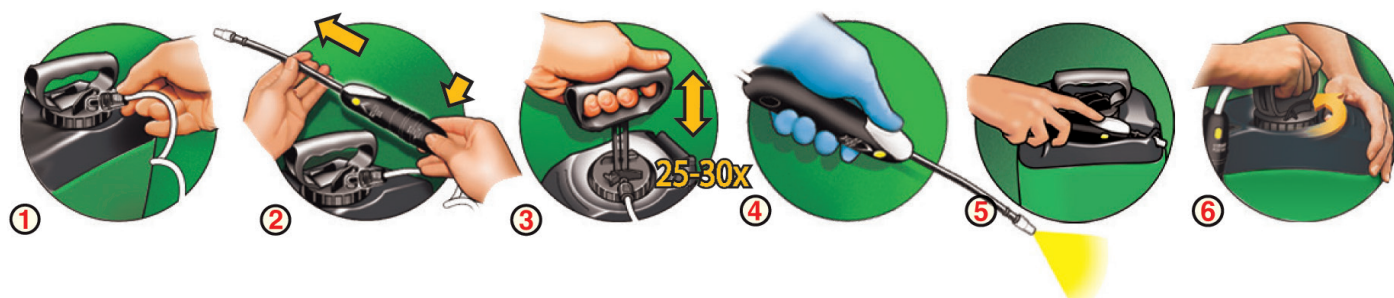
roundup-garden.com

ROUNDUP® FAST ACTION PATH & DRIVE Ready to Use Weedkiller

ROUNDUP® FAST ACTION PATH & DRIVE Weedkiller is absorbed by leaves and moves through the entire plant, above and below ground, to destroy weeds growing through all hard surfaces including drives, patios, paths, tarmac, gravel and paving. It is inactivated on contact with the soil and is then broken down by soil micro-organisms, to allow replanting.

KEEP CHILDREN AND PETS OUT OF TREATED AREAS UNTIL DRY.

INSTRUCTIONS FOR USE



Although not a requirement, as good practice, we recommend wearing waterproof gloves and gardening footwear.

1. Cut the white ties to release the hose and wand and connect the hose to the pack as shown. This is a quick couple system which is not reversible i.e. once in place cannot be removed without force. **2. EXTEND WAND** - Lift sprayer off bottle, push yellow button while pulling lance into spray position. **3. PUMP** - Pump handle 25-30 times for up to 10 minutes of spray. After pumping, push handle down, turn clockwise to lock into carry position. **4. SPRAY** - Adjust spray pattern by turning the nozzle. Aim 50 cm from target weed and press white trigger. Spray to lightly wet the leaves avoiding run-off. **5. RETRACT WAND** - After use, push the yellow button and retract the wand to its original position before clipping it onto the top of the pack for storage. This will prevent the accidental release of spray solution when in the storage position. **6. STORE** - Push pump handle down, turn pump handle and cap anti-clockwise to relieve pressure, then retighten before storage. **7. REFILL** - To refill remove the pump mechanism by unscrewing in an anti-clockwise direction.

When to use

- Spray at any time when the weeds are actively growing and have adequate leaf area to absorb the spray.
- Rain within 6 hours of spraying reduces effectiveness and repeat treatment may be necessary.
- Apply in calm conditions to avoid drift onto cultivated plants.
- Treat established perennial weeds at the start of flowering to give best results.
- Spray nettles and ground elder when new leaves have unfolded fully in late spring.

- Weeds may show first effects from a few days up to 4 weeks, depending on the weather and the type of weed.
- Leave weeds 7 days before digging or soil cultivation, for the weedkiller to move to the roots.
- Repeat application if necessary, should new growth appear.

Where to use

- Controls most weeds around the garden, e.g. gravel areas, paths, drives, hard surfaces, patios, tarmac, along fences and for edging lawns.
- It can be used to clean up weedy ground before planting vegetables, flowers, bushes and trees, and to renovate overgrown areas.
- Do not use on lawns or other wanted plants unless you want to kill them.

Restrictions

- Avoid contact by spray and spray drift with cultivated plants and desired vegetation.
- To avoid transfer to lawns and other desired vegetation do not walk into treated areas until the product has dried.

This product is a home garden weedkiller for use on unwanted vegetation and areas not intended to bear vegetation. It contains 7.2g/l glyphosate acid (present as 9.7g/l) IPA salt of glyphosate in a ready to use solution.

Roundup Fast Action Path & Drive Weedkiller MAPP 14483 - PCS N° 05447

RISK & SAFETY INFORMATION

Read label before use • Keep out of reach of children • Keep product away from food and drink • If medical advice is needed, have product container or label at hand • Keep product in original container • Dispose of contents/container to a household waste recycling centre as hazardous waste except for empty containers which can be disposed of by recycling. Contact your local council for details. **To avoid risks to human health and the environment, comply with the instructions for use -**

MAPP 14483

**ROUNDUP® FAST ACTION PATH & DRIVE Weedkiller; 7.2 g/L glyphosate acid (0.72%w/w)
PCS 05447**

STORAGE AND DISPOSAL

**DO NOT EMPTY INTO DRAINS, SINKS OR OTHER WATER POINTS.
DO NOT CONTAMINATE WATER WITH THE PRODUCT OR ITS CONTAINER.**

Roundup® is a registered trade mark of Monsanto Technology LLC. © Monsanto



Keep children and pets
away from treated areas
until spray has dried



Authorization Holder: Monsanto UK Ltd, PO Box 663, Cambourne, Cambridge CB1 0LD.

The Scotts Miracle-Gro Company, 1 Archipelago, Lyon Way, Frimley, Surrey GU16 7ER, England

Telephone 01276 401 390

PROTECT FROM FROST
12593513