

To ensure product quality, make sure your platform meets the system requirements before purchasing LGX (Live Gamer Extreme)

Step 1. Make sure your Desktop or Laptop meets the system requirements below :

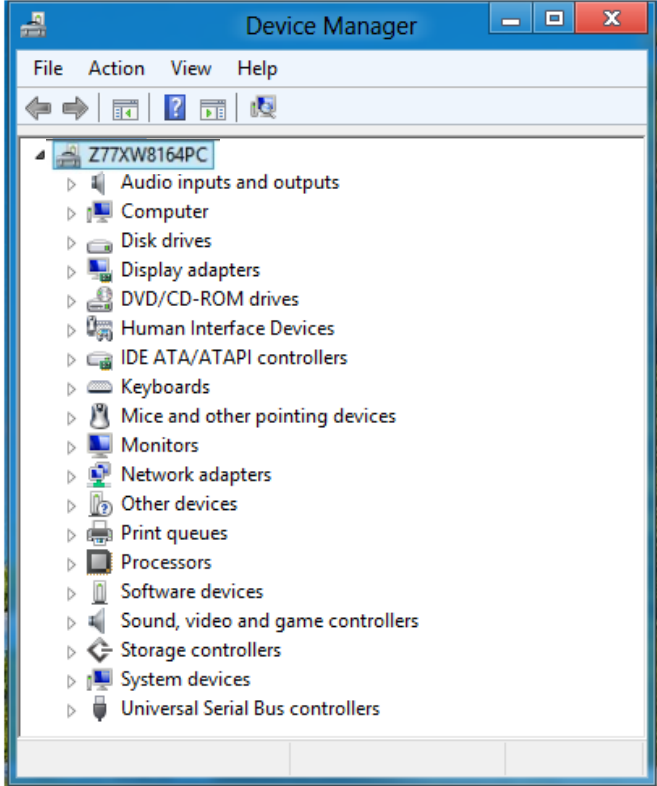
[For Full HD 1080p@60fps recording / streaming]

System Requirements		
	Desktop	Laptop
Operation System	Windows® 10 / 8.1 / 7 (64/32 bit)	
CPU	Intel® Core™ i5-4440 3.10GHz or above 【Hardware codec recommend）】	Intel® Core™ i7-4810MQ or above 【Hardware codec recommend】
	Intel® Core™ i7-4770 3.4GHz or above 【Software codec recommend】	
Graphic Card (DirectX 10.C compatible or above)	NVIDA GeForce® GTX 660 or above	NVIDA GeForce® GTX 870M or above
Memory	4GB (8GB is recommend)	
Interface	USB 3.0 (Verified chipset : Intel chipset with native USB 3.0 host controller) ※ LGX can be used together with these certified chipsets : ASMedia / VIA / Renesas / Fresco 【For using Windows® 10 / 8.1】 • Intel / ASMedia / Renesas / Fresco : We recommended to update your the USB 3.0 chipset driver on your computer to the latest version through 【Windows Update】 . • VIA : Please be sure to use LGX before you downloaded and installed the latest USB 3.0 host controller driver from your PC / motherboard / USB3.0 PCI-E Card via manufacturer (Replace Windows built-in xHCI driver with VIA xHCI driver.) 【For using Windows® 7】 • Intel / Fresco : We recommended to update your the USB 3.0 chipset driver on your computer to the latest version through 【Windows Update】 . • ASMedia / VIA / Renesas : Please be sure to use LGX before you downloaded and installed the latest USB 3.0 host controller driver from your PC (Laptop/Desktop) / motherboard / USB3.0 PCI-E Card via manufacturer. ※ With ASMedia chipset, 1080p@60fps recording is only supported when running Windows 8.1 / 8 with Microsoft’s built-in USB 3.0 driver. If you are using ASMedia USB 3.0 chipset, we recommend using Windows 10 / 8.1, or connect your LGX to a compatible USB 3.0 port (Such as Intel’s - Check FAQ page : 「Which USB 3.0 hub is my LGX using?’」) . ※ For further detail about USB 3.0, please check FAQ ※ LGX does not support USB 2.0.	
Power Requirement	USB 3.0 bus-power	

Step 2. Check your computer has Intel chipset with native USB 3.0 host controller :

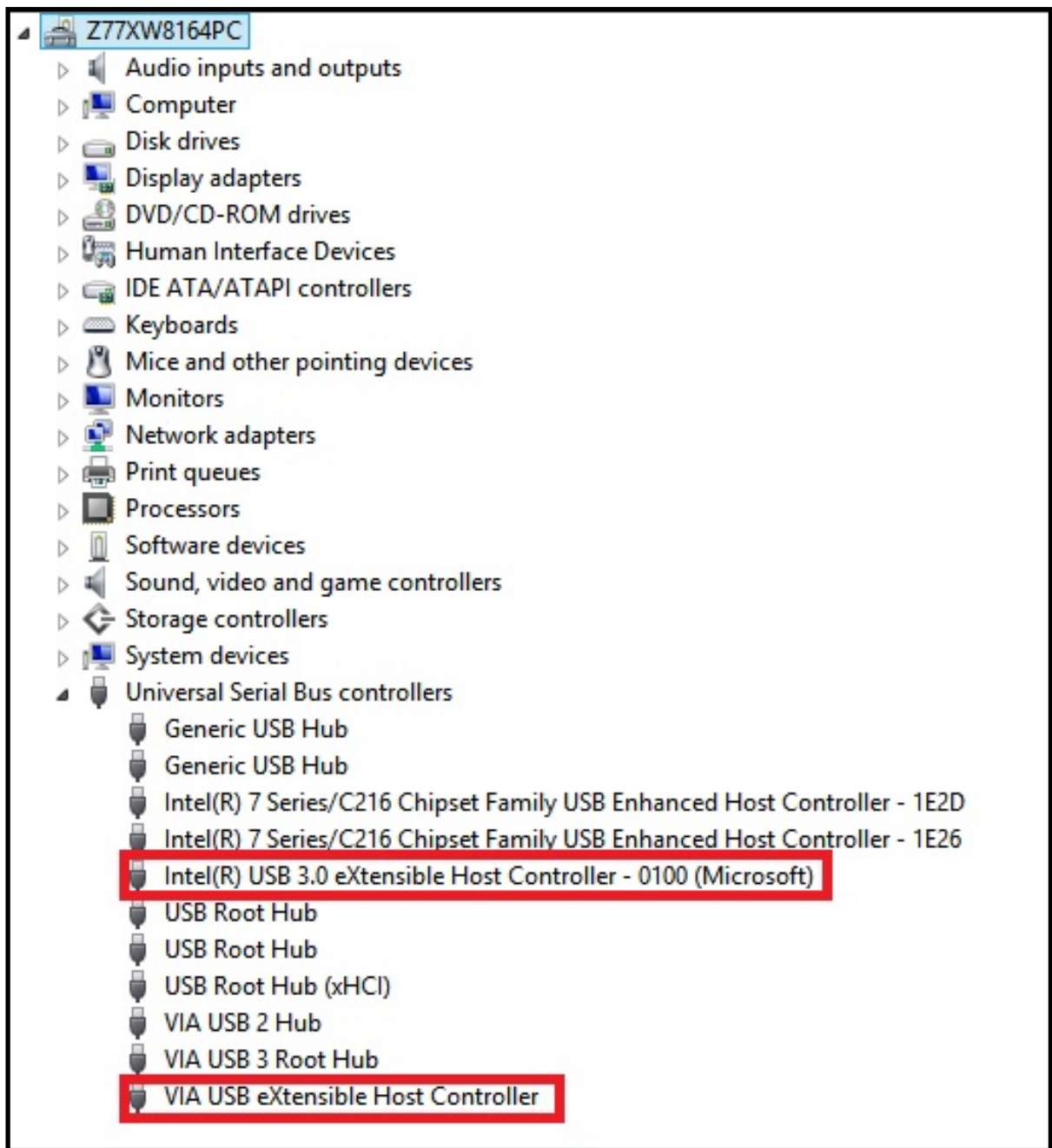
Follow the steps below to verify your USB 3.0 host controller meets the requirement :

1) Please open 【Device Manager】 .



2) On 【Device Manager】 , double-click 「Universal Serial Bus controllers」 , and looking for :

- Intel(R) USB 3.0 eXtensible Host Controller (mandatory)
- ASMedia, VIA, Renesas, Fresco USB eXtensible Host Controller



※ For further inquiries, please contact our customer support at : <http://avertv.avermedia.com/Support/ContactSupport.aspx>