

# How To Connect YEELIGHT To PHONE

- Download the Yeelight app on your Android/iOS devices from Play Store or App Store.
- Once the download is complete, turn on Bluetooth on your device.
- Launch the Yeelight App and you will see the Yeelight products listed on your side menu. Just select the bulb/lightstrip, press connect.
- Within the device interface, follow the guide to turn on the bulb. And then connect your PHONE to WiFi. Tap "Next" to continue.
- Enter your WiFi password in APP. Tap "Next" to continue, now you have created a Wi-Fi network provided by the bulb.
- Enter "Settings" in your phone and WiFi interface. Choose the Wi-Fi "yeelink-light-xxx" and connect. Once successfully connected, go back to the app.
- Wait until the app pairs with the phone and bulb. The bulb will show on the app main screen as "Yeelight Colour Bulb".



YEELIGHT

# How To Connect YEELIGHT To PHONE





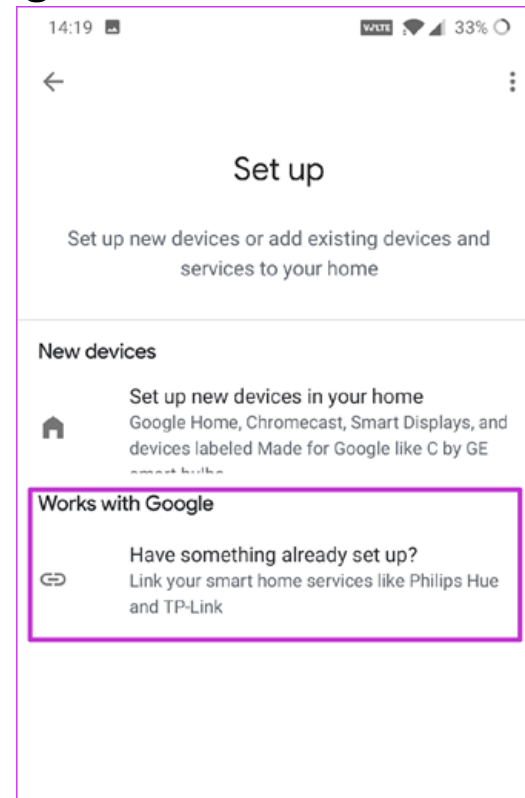
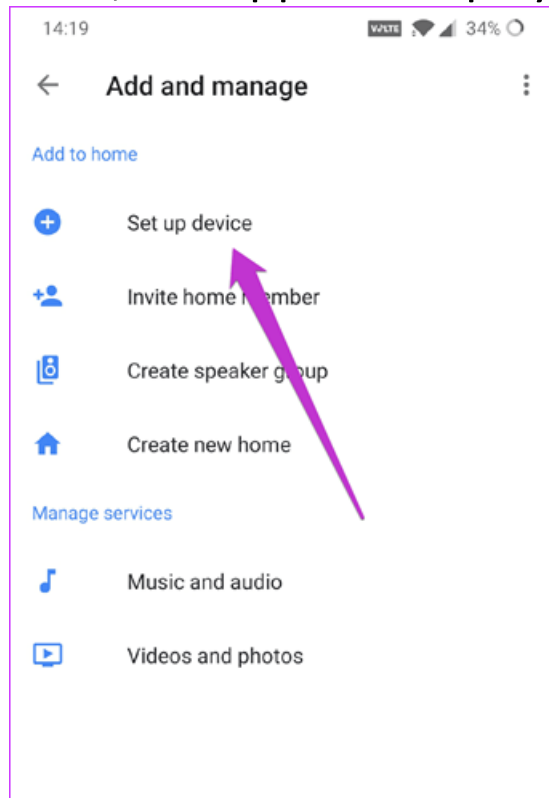
YEELIGHT

# How To Connect YEELIGHT To Google Home



*Before we get started, make sure to install the Yeelight app first and test if your lights are working with the app.*

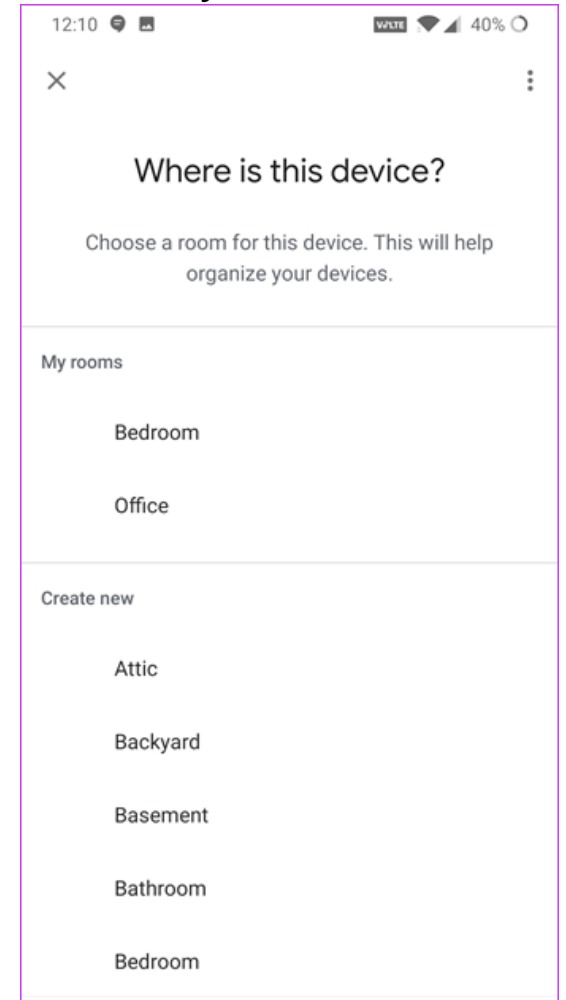
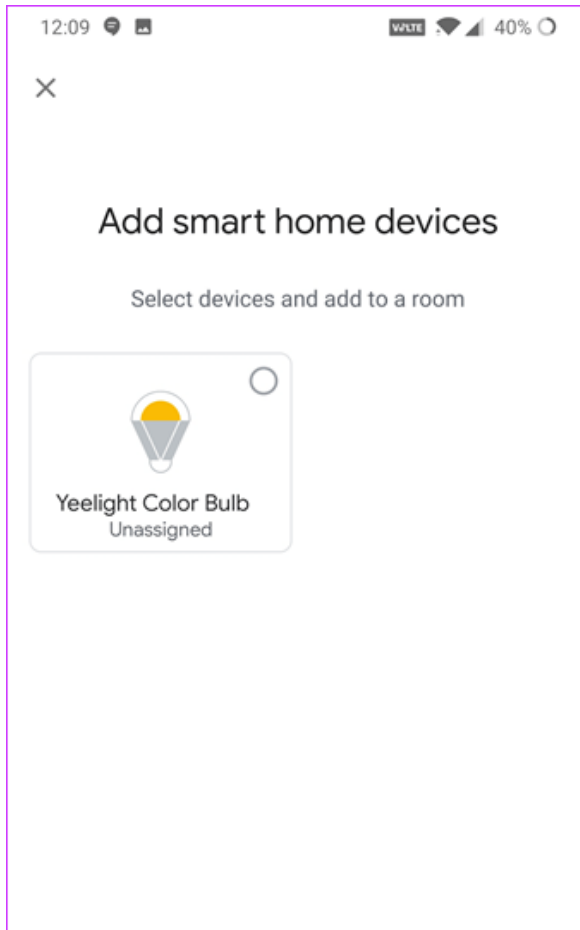
1. Open the Google Home app and tap on the Add icon. Select Set up device > Works with Google and search for Yeelight. Tap on it to open the Xiaomi login page. This action will link your Xiaomi account and your Google Home account. Sign in using the same credentials that you used to sign-in to your Yeelight app. Once the login is successful, the app will display all your connected Yeelight bulbs.



# How To Connect YEELIGHT To Google Home



- Before you can enable the said bulb, you'd need to assign its room. That is because if you have more than one bulb, it makes it easy for Google Assistant to find a particular bulb.



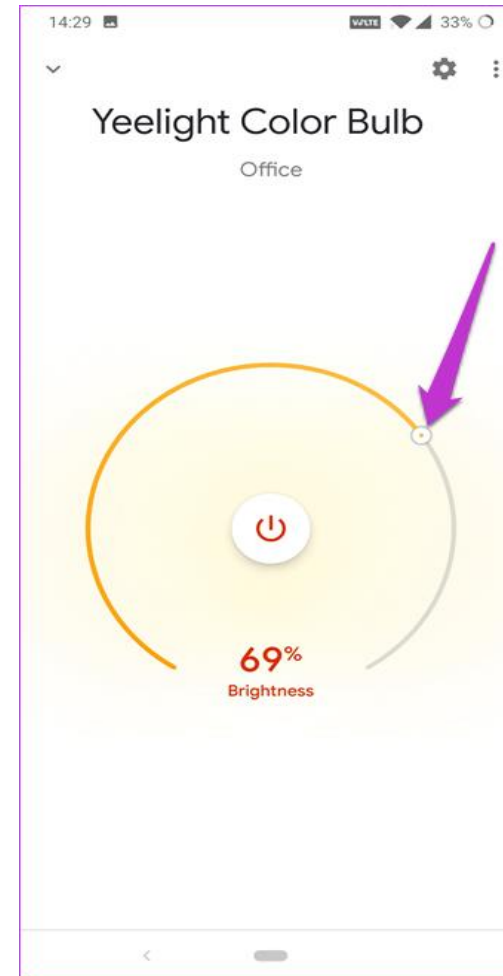


YEELIGHT

# How To Connect YEELIGHT To Google Home



- Having assigned the room, you can do your first test by toggling the On/Off switch. To adjust the brightness, tap on the bulb and drag the slider as per your liking.





If you have multiple Yeelight bulbs, you can name them as Bulb 1, Bulb 2, Bulb 3 and so on, to make them easier to remember. Or, you can give single syllable names, such as Ava, Lily, etc.

Now, to test using your voice, simply wake up your Assistant and say something along the lines of "Turn Ava in the office off."

Some of the common commands for Yeelight bulbs are as follows:

- Turn on/off lights in <room name>
- Turn on/off light
- Dim the <light name>
- Brighten the <light name>
- Turn <light name> red

## SMART LED BULB

- Switch the bulb on and off five times in a row (2 seconds on and 2 seconds off), then the bulb will start flashing. After 5 seconds, it will restart and show white colour, which means the bulb has been reset to default.

## AURORA LIGHTSTRIP PLUS

- Cut off the adapter power. Long press the power button and connect to the power supply. Hold the button for five seconds until the light strip displays red, green, and blue circulating lights, and then release. The reset is complete when the light turns yellow.

*\* When the light strip is used on a new network, it must first be reset to its factory settings and then setup again on the new network.*