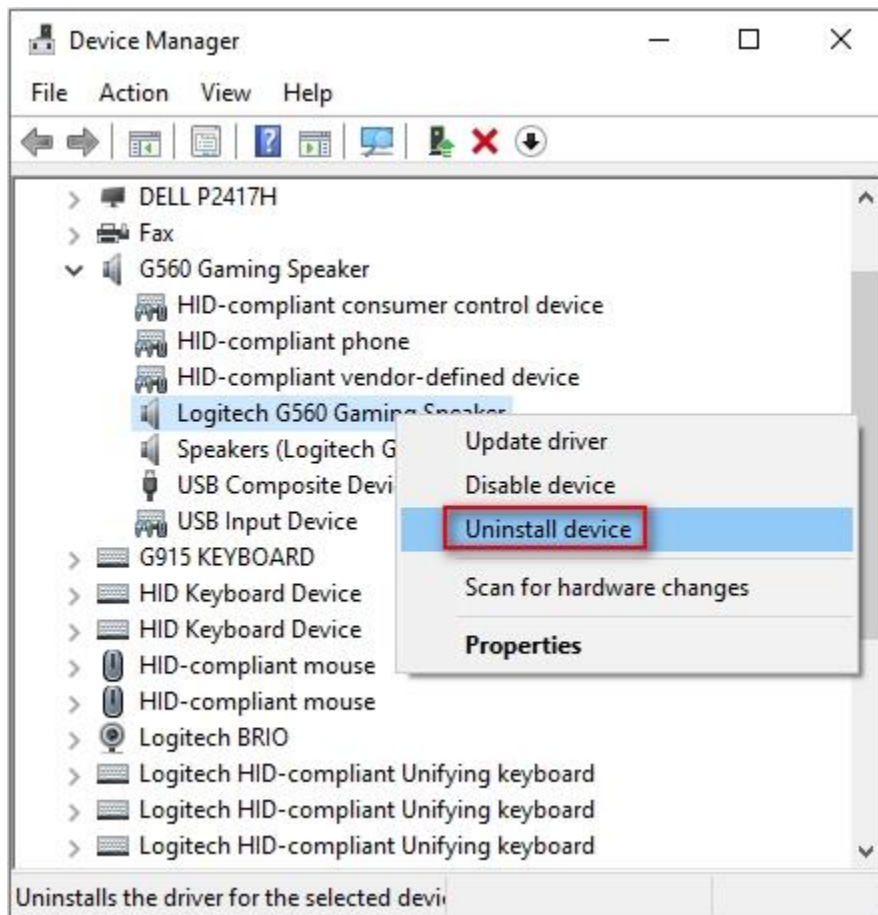


Frequently Asked Questions

- **+Device does not appear in G HUB**

If some features of G HUB do not appear to work correctly and restarting doesn't help, try this:

1. Go to Device Manager (WIN+PAUSE|BREAK).
2. Click on **View** at the top and view **Devices by container**.
3. Look for your device and expand it. You are looking for the name of the device, for example, Logitech Pro X Gaming Headset, or Logitech G560 Gaming Speaker.
4. Right-click and select **Uninstall Device**.



5. Check **Delete the driver software for this device** and then click **Uninstall**.



6. Unplug the device and plug it back into a different USB port. It should re-enumerate and be detected in G HUB.
7. G HUB should then download the driver for your device.

If issues persist:

Run G HUB with the default settings:

1. Exit G HUB by right-clicking the applet in the task tray and selecting **Quit**.
2. Navigate to C:\Users\[USERNAME]\AppData\Local\LGHUB, where [USERNAME] will be specific to your account.
3. Find settings.json and make a copy and back this up somewhere on your computer. The Desktop is a good place so you can find it easily.
4. Navigate to C:\Users\[USERNAME]\AppData\Local\LGHUB, where [USERNAME] will be specific to your account.
5. Delete the settings.json file in the LGHUB folder.
6. Run G HUB. You will notice that all the settings have been set back to default and the settings.json file has been rebuilt.

Restoring your old settings

If you want to restore your old settings:

1. Quit G HUB.
2. Copy and paste the backup of settings.json that you saved earlier into the C:\Users\[USERNAME]\AppData\Local\LGHUB folder.
3. Run G HUB — your old settings should be restored.

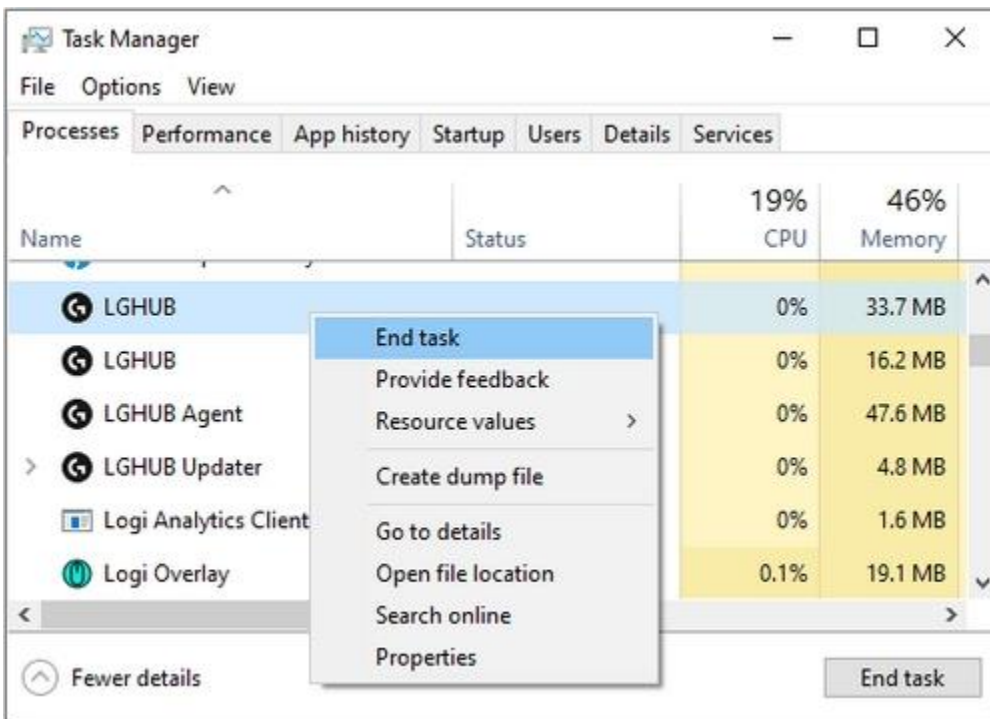
• +G HUB freezes while loading and logo animation loops

If G HUB seems to be stuck while trying to load and the logo animation loops, try the following:

1. Exit G HUB by right-clicking the applet in the task tray and selecting **Quit**.



2. Navigate to Task Manager (CTRL+ALT+DEL).
 NOTE: You may also need to click **More Details** at the bottom of the window
 Look for LGHUB, LGHUB Agent and LGHUB Updater, right-click and choose **End task** on each.



3. Once those processes are ended, navigate to C:\Program Files\LGHUB and run these in order:
 - Lghub_updater.exe
 - Lghub_agent.exe
 - Lghub.exe

This should resolve the logo spinning issue. If it doesn't, then make sure you're running with admin privileges. G HUB might need to update and needs admin privileges to do this.

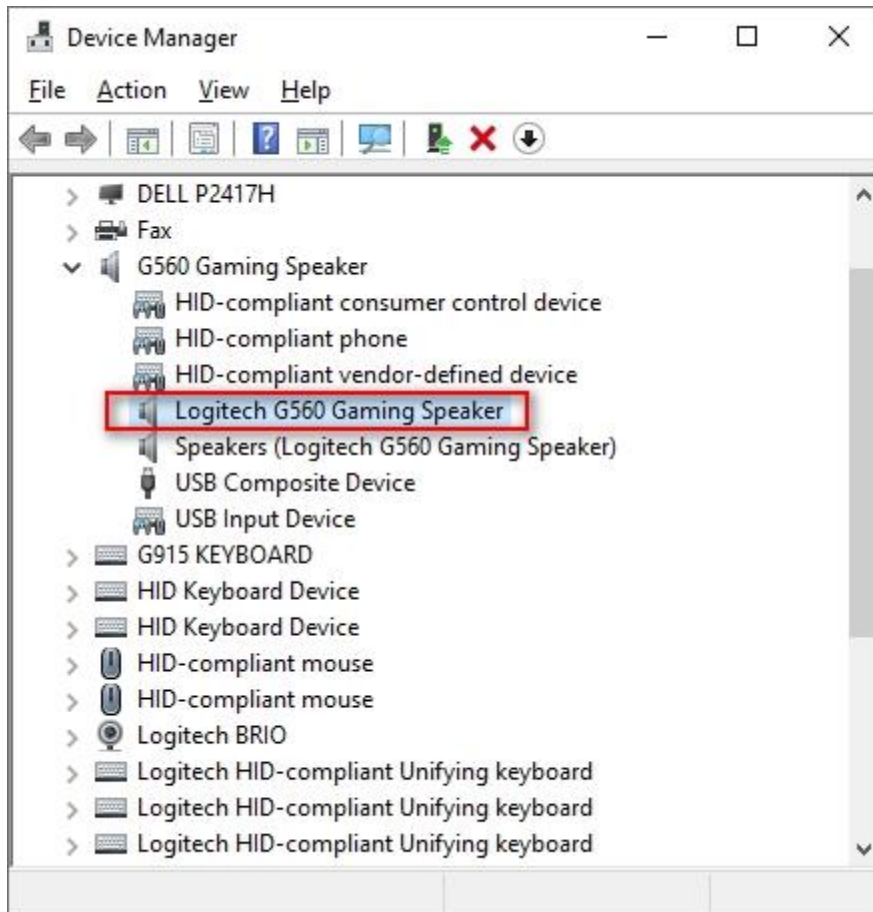
If you're using an administrator account and the issue persists, please follow the steps in [G HUB Install/Uninstall/Update Troubleshooting](#).

- +Audio device not recognized

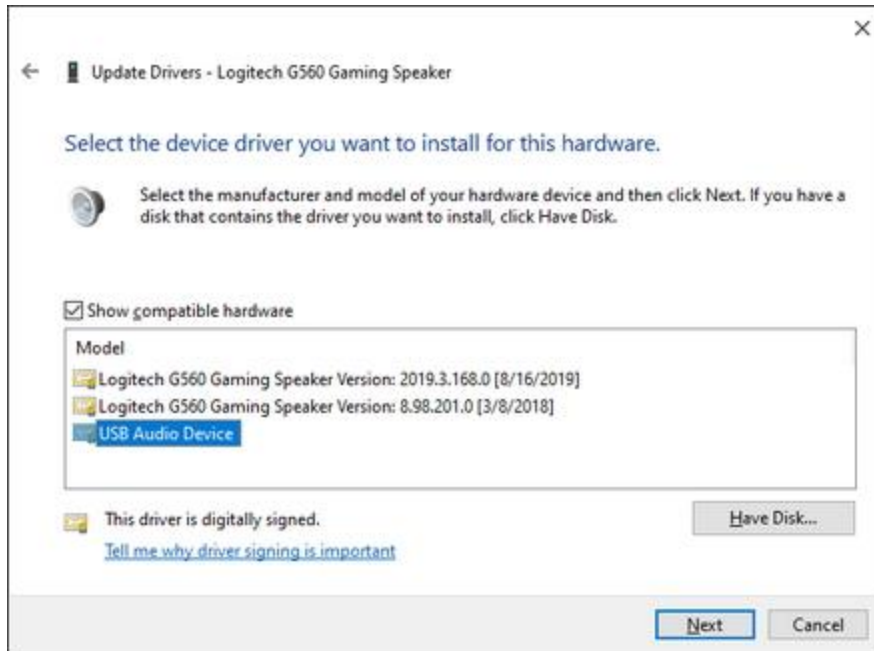
If you have problems with a headset or speaker, the following:

Revert back to Microsoft drivers:

1. Go to Device Manager (WIN+PAUSE|BREAK).
2. Click on the **View** tab at the top and select **Devices by container**.
3. Look for your headset/speaker and expand it. You are looking for the named device, for example, Logitech G560 Gaming Speaker or Logitech Pro X Gaming Headset.



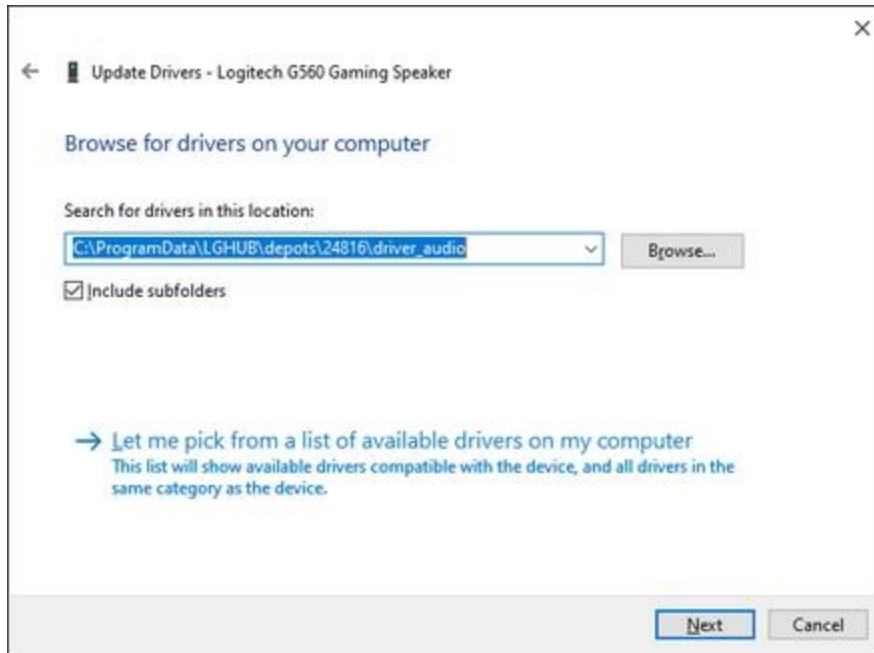
4. Right-click and click **Properties** and then select the **Driver** tab.
The **Driver Provider** should be Logitech — if it's Microsoft you don't need to change the driver.
5. If the driver is Logitech, click **Update Driver** and then **Browse my computer for driver software** > **Let me pick from a list...** > and choose **USB Audio Device**.



6. Click **Next**. This should update back to Microsoft's standard drivers.

Update to latest Logitech Audio Driver:

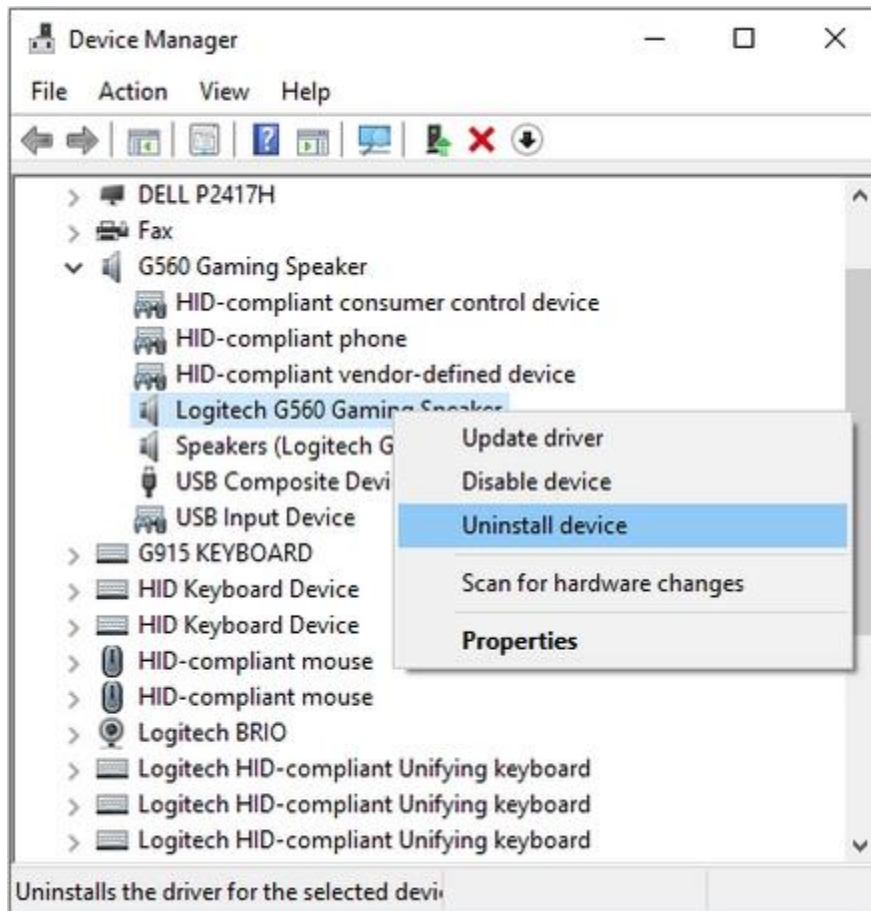
1. On the same device in Device Manager, right-click on **Properties** and then click the **Driver** tab.
2. Click **Update Driver** > **Browse my computer for driver software**.
3. Click the **Browse** button to the right of Search for drivers in this location:
Navigate to: C:\ProgramData\LGHUB\depots\2xxxx\driver_audio\ (note that although the five-digit number might be different, you are looking for a folder containing the driver audio folder).



4. Click **Next** to update to the latest audio driver.

If issues persist:

1. Go to Device Manager (WIN+PAUSE|BREAK).
2. Click on **View** at the top and select **View devices by container**.
3. Look for your device in the list and expand it. You are looking for the named device, for example, Logitech Pro X Gaming Headset, or Logitech G560 Gaming Speaker.
4. Right-click and select **Uninstall device**.



5. Check **Delete the driver software for this device** and then click **Uninstall**.



6. Unplug the device and plug it back into a different USB port. It should re-enumerate and be detected in G HUB.
7. G HUB should then download the driver for your device.

- **+Stop new devices from pairing using LGS Arx Control**

To stop other devices using Arx Control from connecting to your computer:

1. Open Logitech Gaming Software.
2. Click the Settings gear icon, and then click the **Arx Control** tab.
3. Select “Do not allow new device pairing”.
4. Click **OK**.

- **+Collect Windows log files**

Windows log files can be used to troubleshoot and diagnose issues you may encounter while playing games and watching videos. You may be asked by technical support to provide various log files so they can further help you to solve the problem. Here's how to obtain some of the most commonly used files:

- [DirectX Diagnostic files](#)
- [System Information files](#)
- [Windows System and Application Event log files](#)
- [Installation log files](#)

DirectX Diagnostic files

DirectX is a programming interface that handles Windows tasks related to multimedia, especially game programming and video. The DirectX Diagnostic file contains information about this interface and its current status. Here's how to generate a DirectX Diagnostic file:

1. Hold down the Windows key and press R.
2. In the Run dialog box, type DXDIAG and then click **OK**. This opens the DirectX diagnostic tool.
3. On the bottom of the DirectX Diagnostic Tool window, click **Save All Information**.
4. When prompted, save the file to your Desktop with the file name DXDIAG.
5. Click **Save**.
6. Attach the file when you reply to Support.

System Information files

The Microsoft System Information tool collects system information, such as devices installed on your computer and any associated device drivers. To generate a System Information file:

1. Hold down the Windows key and press R.
2. In the Run dialog box, type MSINFO32 and then click **OK**. This opens the System Information diagnostic panel.
3. In the menu bar on the left, click **File**, and then click **Save**. This will prompt you to choose a location to save the file.
4. When prompted, choose your Desktop as the location to save the file with the file name MSINFO32.
5. Click **Save**.

6. Attach the file when you reply to Support.

Microsoft Windows System and Application Event log files

The Microsoft Windows Event log is a centralized log service, where the operating system and applications can report events that have taken place, such as when an action successfully completed or if there was a failure. The logs can indicate where and why an issue may be occurring.

Use the steps below to generate System and Application Event log files for your specific version of Windows:

- [Windows XP](#)
- [Windows Vista](#)
- [Windows 7, Windows 8, and Windows 10](#)

Windows XP

1. Hold down the Windows key and press R.
2. In the Run dialog box, type EVENTVWR.MSC and click **OK**. This will open the Event Viewer.
3. In the left pane, under Event Viewer (Local), right-click on **Application** and select **Save Log File As...** from the menu.
4. When prompted, type Application Event Log for the file name and save the file to your Desktop.
5. Next, right-click on **System** and select **Save Log File As...** from the menu.
6. When prompted, type System Event Log for the file name and save the file to your Desktop.
7. Attach the file when you reply to Support.

Windows Vista

1. Hold down the Windows key and press R.
2. In the Run dialog box, type EVENTVWR.MSC and click **OK**. This will open the Event Viewer.
3. In the left pane, under Event Viewer (Local), expand the Windows Logs folder by double-clicking on it or clicking the arrow next to the folder.
4. Under Windows Logs, right-click on **Application** and select **Save Events As...** from the menu.
5. When prompted, type Application Event Log for the file name and save the file to your Desktop.
6. Under Windows Logs, right-click on **System** and select **Save All Events As...** from the menu.
7. When prompted, type System Event Log for the file name and save the file to your Desktop.

8. Attach the file when you reply to Support.

Windows 7, Windows 8, and Windows 10

1. Hold down the Windows key and press R.
2. In the Run dialog box, type EVENTVWR.MSC and click **OK**. This will open the Event Viewer.
3. In the left pane, under Event Viewer (Local), expand the Windows Logs folder by double-clicking on it or clicking on the arrow next to the folder.
4. Under Windows Logs, right-click on **Application** and select **Save All Events As...** from the menu.
5. When prompted, type Application Event Log for the file name and then save the file to your Desktop.
6. Under Windows Logs, right-click on **System** and select **Save All Events As...** from the menu.
7. When prompted, type System Event Log for the file name and then save the file to your Desktop.
8. Attach the file when you reply to Support.

Installation log files

When Logitech software is installed, it uses several key log files in Windows to store installation information. These log files can indicate where a potential issue may lie. Support can use that information to help provide a resolution. To locate the installation log files:

1. Hold down the Windows key and press R.
2. In the Run dialog box, type %WINDIR%\INF and click **OK**. This will open Windows Explorer in the Windows\INF folder.
3. In the Windows\INF folder, scroll down until you find the following files:
 - o setupapi.dev.log
 - o setupapi.app.log

Copy the files to your Desktop.

4. Attach the files when you reply to Support.

• +Setting up gaming-keyboard profiles for single player and multiplayer .exe files

Some games have separate .exe files for single player and multiplayer modes. For these games, each .exe file needs its own profile.

NOTE: Before you proceed, make sure either the single player or multiplayer mode has an existing, working profile. If you need help getting a profile to work, see answer [360023245934](#).

To create a new profile for the other game mode:

1. Open the Logitech Gaming Software:

Start > All Programs > Logitech > Logitech Gaming Software 8.x

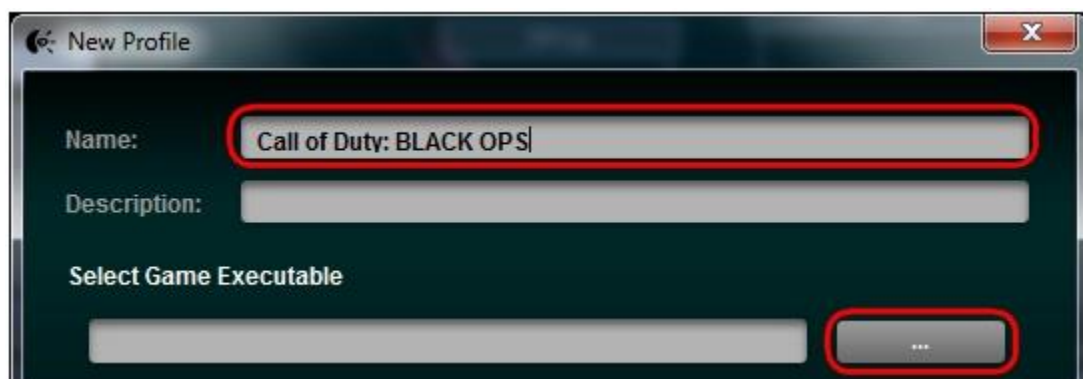
2. Click the glowing G-Keys.



3. Click the down arrow under the "+" and select "Create New Profile."

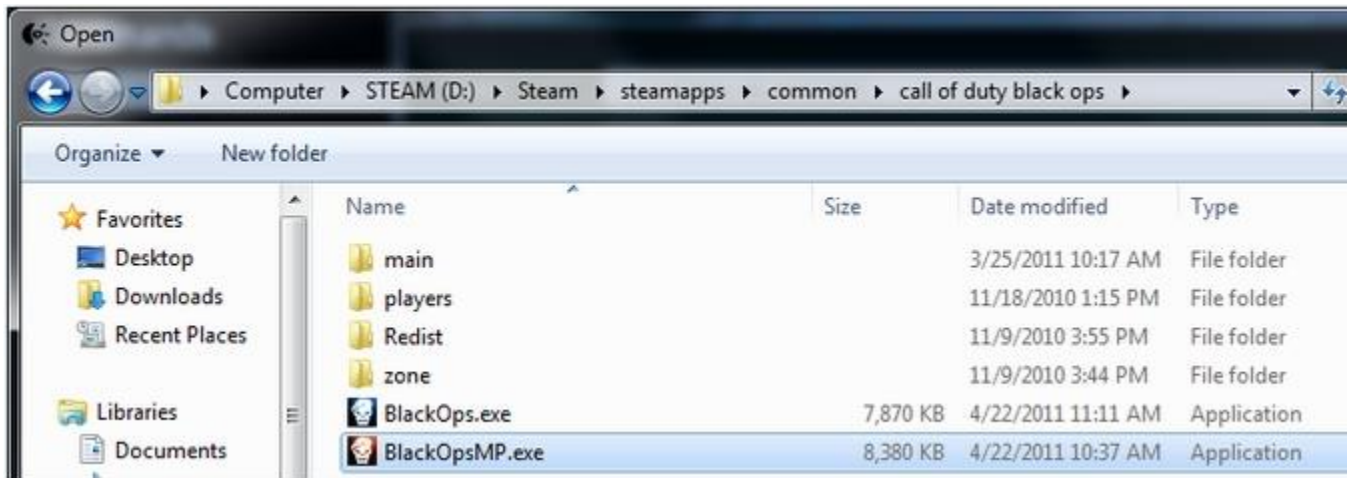


4. Enter a name that identifies the profile and then click the "..." button by the "Select Game Executable" option.

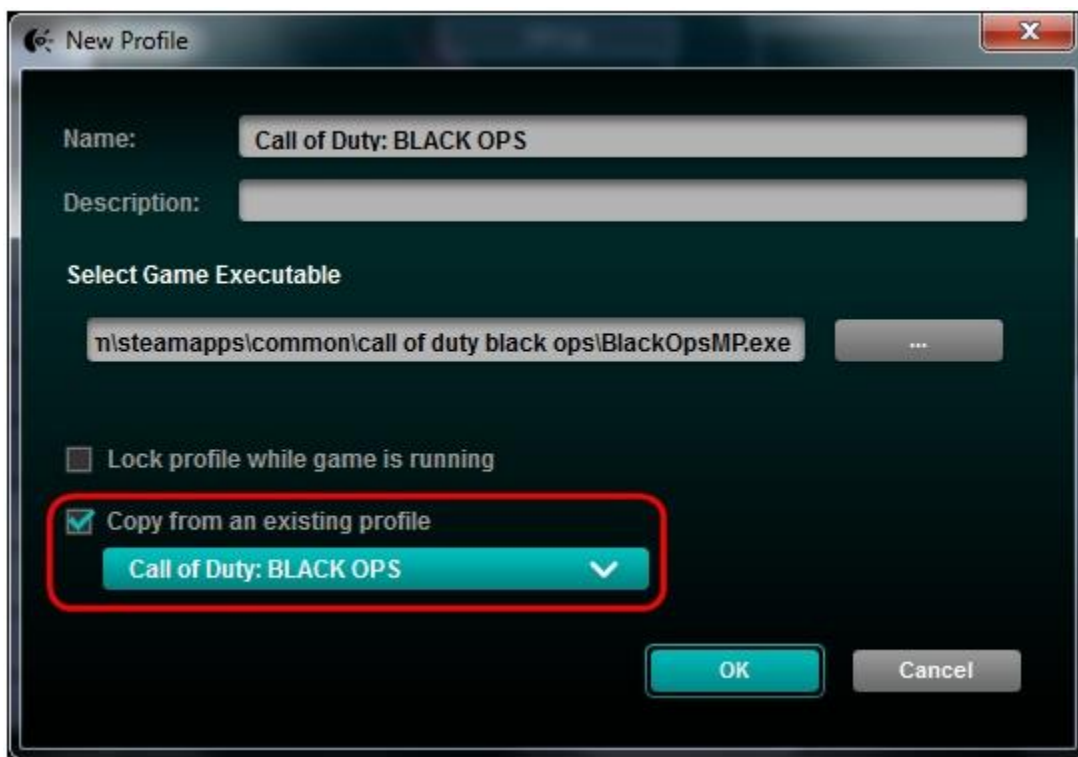


5. Browse to the directory of the game, select the game .exe and then click **Open**.

NOTE: The game's install location shown below may not be the same as your system. If you're unsure of the location of the correct .exe file, see answer [360023245934](#) for help.



6. Select the "Copy from an existing profile" check box and then choose the profile that works for the other game mode.



7. Click **OK** to finish setting up your new profile.

NOTE: Profiles may share the same name. In the image above, both BlackOps.exe and BlackOpsMP.exe have the profile name "Call of Duty: Black Ops". You can also use a

different name, like "Call of Duty: Black Ops (MP)" for the multiplayer BlackOpsMP.exe.

You should now have a new profile for the other game mode with all of your customizations carried over from the original.

- **+Gaming-keyboard profile stops working in the middle of a game**

When a profile stops working in the middle of a game, there are two possible causes. Either the profile is:

1. **Not associated with the correct .exe file**

The profile is detected in the game launcher or menu, but stops working while playing the game. This happens when the profile isn't associated with the correct .exe file. You can fix this by assigning the game's .exe file to the profile and not the launcher's .exe file. See answer [360023245494](#) for instructions.

OR

2. **Reverted to the Default Profile**

Another application running on your computer may come to the foreground, causing the active profile to revert to the Default Profile. You can fix this by locking the profile assigned to the game. See answer [360023245494](#) for instructions.

- **+Setting gaming-keyboard profiles to be Persistent or Default using Logitech Gaming Software**

Logitech Gaming Software (LGS) has two special profile states:

- **Default** (used when no other active profile is detected)
- **Persistent** (overrides all app-specific profiles)

Setting a Default Profile

Logitech Gaming Software (LGS) comes pre-installed with a Default Profile. LGS uses the Default Profile when no other profile is currently running. You can assign any profile of your choice to be the Default Profile by following the steps below.

To set a profile as default:

1. Open the Logitech Gaming Software:

Start > All Programs > Logitech > Logitech Gaming Software 8.x

2. Click the glowing G-Keys.



3. Right-click the profile of your choice and select "Set As Default".



The profile you chose is now set as the default. If you right-click on it in the list, there should be a check mark next to "Set As Default". This will be the active profile when no other profiles are running.

NOTE: To return to the preinstalled Default Profile, follow the above steps, selecting "Default Profile" in Step #3.

Setting and disabling a Persistent Profile

A Persistent Profile is one you manually select to be used for all applications. It will override any application-specific profile assignments. You can use this to troubleshoot poor profile-performance or to make configuring your gaming mouse simpler.

To set a profile as persistent:

1. Open the Logitech Gaming Software:

Start > All Programs > Logitech > Logitech Gaming Software 8.x

2. Click the glowing G-Keys.



3. Right-click the profile you're having trouble with and select "Set As Persistent".



The profile you chose is now set as the Persistent Profile. If you right-click on it in the list, there should be a check mark next to "Set As Persistent". This profile will now act as the active profile whenever an application is launched, overriding any application-specific profile assignments.

To disable the Persistent Profile:

1. Right-click the current Persistent Profile.
2. Select "Set As Persistent". The check mark should disappear and this profile will no longer override other profiles.

- **+Troubleshooting gaming-keyboard profile detection using Logitech Gaming Software**

You can configure your gaming keyboard separately for each game or application on your computer (see [360023244954](#) for instructions). When a game is launched, the profile associated with it should activate. Sometimes, the profile doesn't activate properly, which can prevent game-specific settings from being applied.

When a game profile isn't activating properly:

- Try using a Persistent Profile (see answer [360023244954](#) for instructions).

NOTE: Using a persistent profile will help you determine if the Logitech Gaming Software is working properly.

- Make sure the correct .exe file is selected for the game (see answer [360023244954](#) for help).
- Check that both the single player and multiplayer .exe files have profiles (see answer [360023244954](#) for help).

- **+My gaming-keyboard profile stopped working after a game update**

Each profile is associated to a specific .exe file. Sometimes, when you install a game update or expansion pack, the location of the correct.exe may change.

If you recently installed a game update and then your game profile stopped working, see answer [360023243034](#) for help with finding the current game .exe.

- **+Linking profiles between a G-Series keyboard and gaming mouse using Logitech Gaming Software**

Logitech Gaming Software (LGS) shares the profiles between your G-Series keyboard and your gaming mouse, so no manual profile linking is needed. Macros and keystrokes you configured for your G-Series keyboard can be assigned to your gaming mouse, and mouse button presses you configured for your gaming mouse can be assigned to your G-Series keyboard.

NOTE: Certain mouse-specific buttons, like DPI Shift, can only be used with LGS-compatible mice. If you assign a G-Key on your keyboard as DPI Shift with a non-LGS mouse, the button will have no effect. Most other button presses, like Left and Right Click, can be assigned to your G-Keys.

- **+Customize lighting settings on the G512 or G513 gaming keyboards with Logitech Gaming Software**

Activate lighting

If the keyboard's RGB backlights are off, check your Lighting Settings in Logitech Gaming Software (LGS). Alternatively, you may need to use the FN + F7 shortcut to turn on the backlighting.

NOTE: For information on how to toggle the lighting on your gaming keyboard, see [Game Mode and backlight control on the G413 and G513 gaming keyboards](#).

Customize Lighting settings in Logitech Gaming Software

- [Lighting Modes](#)
- [On-board memory](#)
- [Per Profile Backlighting](#)

You can use Logitech Gaming Software (LGS) 8.98 and later to customize lighting settings for your keyboard. If you don't have Logitech Gaming Software, you can get the latest version from the LGS [download](#) page.

Launch LGS, select your keyboard and click the Lighting Settings icon. You can select from four lighting modes and configure lighting for different game profiles.



Lighting Modes

- **Freestyle:** Use Freestyle mode to customize the color of any individual key as well as the Caps and Game Mode indicators. Pick a stock color or use the color selection wheel create your own. Then, click on the key you want to apply the color to. You can also disable or switch off lighting for one or more keys. Select the black color on the bottom right of the stock color list, and click on the key for which you wish to disable or switch off lighting.



- **Zones:** Group keys together into color zones. You can only assign an individual key to one zone at a time.



To add keys to a zone, select a zone in the Lighting Zones pane and then select a key. You can also use the + button to create additional zones.

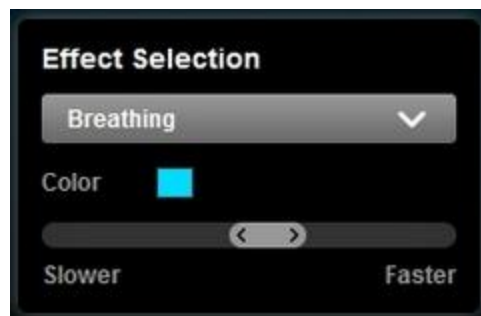


NOTE: The active zone is indicated by a blue flag in the right side corner of the name.

- **Effects:** Activate one of six different custom lighting effects:



- **Fixed Color** — Use a stock color, or the color selection wheel to create your own custom color.
- **Breathing** — Select this option to activate a pulsating effect that simulates breathing. You can also configure the breathing effect rate. Click and drag the slider to the right to increase the rate of the breathing effect. Drag the slider to the left to decrease the rate.



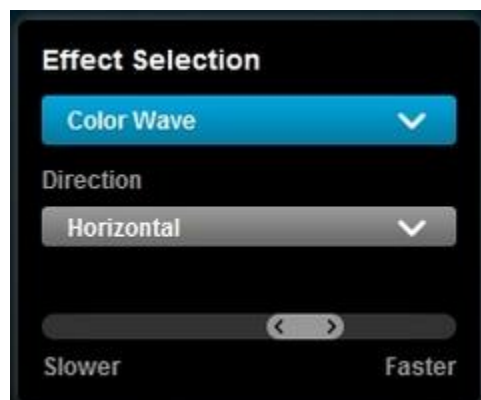
- **Star Effect** — activates an effect that simulates stars in the sky. Random keys (the stars) gradually light up in the selected Star color and eventually fade back into the Sky color. You can choose the number of stars and colors for both stars and sky. You can also configure the Star Effect rate.



- **Color Cycle** — Set the speed for how quickly the colors cycle on the keyboard.



- **Color Wave** — Select this option to set the colors to change horizontally, vertically or from the center out. Use the slider to set the speed at which the color wave cycles.



- **Key Press** — Select this option so the keys you press slowly light up in a color of your choosing and fade back into the background after a short period of time. You can set separate colors for Key Press and Background. Use the slider to customize the speed of the effect.



- **Your Effects:** create and manage your own animated lighting effects. Choose from one of the 16 presets or read Create and manage lighting effects with Logitech Gaming Software to learn how to create your own.



On-board memory

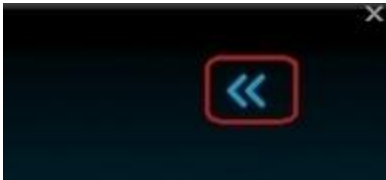
The G512 and G513 gaming keyboards feature onboard memory to store lighting effects. This comes in handy if you need to use a computer that does not have LGS installed. At the time of release, you can only store one Freestyle, Zones or Effects (except Star Effect and Key Press) Lighting Mode layout on the keyboard's memory. For more information, read [Access On-Board lighting effects on the G512 and G513 gaming keyboards](#).

Per Profile Backlighting

The lighting customization options universally affect the G512 and G513 gaming keyboards by default. However, you can also configure lighting settings to be set on a per profile basis.

To enable per profile backlighting:

1. Click on the double left arrows in the top-right corner of the LGS window.



2. Check the box to **Enable per profile backlighting**. A list of active LGS game profiles will appear.



NOTE: Default Profile is selected by default.

3. Select a game from the list to begin configuring lighting settings for that game's profile. Click Scan for New Games to search your computer for recently installed games that may have associated game profiles in LGS. If your game is not automatically associated, see [Scan For New Games does not detect game in Logitech Gaming Software](#).

- **+Access On-Board lighting effects on the G512 or G513 gaming keyboards**

Your G512 or G513 gaming keyboard features onboard memory that contains eight different lighting effects. You can use the onboard memory to activate lighting effects while playing on a computer that does not have Logitech Gaming Software (LGS) installed or while the software is closed. To return to the lighting settings you have previously configured in LGS, simply run the application once more.

See the full list of lighting effects stored on the device's memory next to their shortcuts in the table below.

Shortcut	Lighting Effect
FN key + F5 key	Use the shortcut to cycle between 7 different lighting effects: <ul style="list-style-type: none"> • Color Wave right • Color Wave left • Color Wave center out • Breathing effect • Color Cycle • Ripple Key Press • Fixed color (cyan)
FN key + F6 key	User customized lighting layout
Backlight toggle + +	Increase the speed of the lighting effect
Backlight toggle + -	Decrease the speed of the lighting effect

NOTE:

Increasing or decreasing the speed of the effect affects all lighting effects stored on the device.

User Customized Lighting

You can use LGS 8.98 or later to store one Freestyle, Zones or Effects (select effects only) Lighting Mode layout on the keyboard's memory. Here's how:

1. Launch Logitech Gaming Software (LGS).
2. Select the G512 or G513 gaming keyboard.
3. Click the **Lighting Settings** icon.
4. Select either the **Freestyle**, **Zones** or **Effects Lighting Mode**.

NOTES:

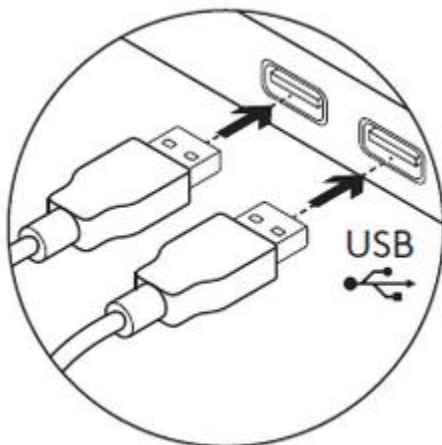
- Your Effects lighting mode layouts cannot be stored in the device's memory.
 - Key Press and Star Effect layouts cannot be stored in the device's memory.
5. Make changes to the keyboard image on-screen.
 6. Once the changes are final, click **Save to device** at the top of the LGS window.



7. While LGS is closed and not running in the background, use the **FN + F6** key combination to access the user-customized lighting layout on the keyboard's memory. For an explanation of the different Lighting Effects, please see [Customize lighting settings on the G512 or G513 gaming keyboards with Logitech Gaming Software](#).

- **+Connect the G413, G512 and G513 gaming keyboards to a computer**

To connect your G413, G512 or G513 gaming keyboard to your computer, we recommend using both USB cables so the pass-through USB port is functional.



However, if you do not want to use the pass-through USB port, you can simply connect the (one) USB cable that has a keyboard symbol on the bottom of the USB connector.



- **+G413, G512 and G513 gaming keyboards pass-through USB port**

The G413, G512, and G513 gaming keyboards feature one pass-through USB port with the following specifications:

USB protocol	USB 2.0
USB speed	Full speed
Maximum load	500 mA

You must connect both USB cables in order to use the pass-through USB port. See [Connect the G413, G512 and G513 gaming keyboards to a computer for more information](#).

NOTE: You can connect USB 3.0 devices to the pass-through port, but it will only provide the transfer and charging rate of a USB 2.0 port.

- **+Game Mode and backlight control on the G413, G512 and G513 gaming keyboards**

Your gaming keyboard has keys that let you turn Game Mode on and off, and cycle between five fixed backlighting brightness levels.

- [Game Mode](#)
- [Backlighting](#)
- [FN key Inversion](#)

Game Mode

While Game Mode is on, the **Windows**, **Menu**, and **FN** keys are disabled to prevent unwanted interruptions. To toggle between Windows and Game Mode, press **FN** and **F8** at the same time.



The Game Mode LED indicator lights up when the mode is active.



In addition to the **Windows**, **Menu**, and **FN** keys, you can disable other keys in Game Mode using Logitech Gaming Software (LGS) 8.98 and later. If you don't have Logitech Gaming Software, you can get the latest version from the LGS [download](#) page. Launch LGS, select your gaming keyboard and click the **Game Mode Settings** icon.



The Game Mode Settings window appears:



Enabled keys are shown in blue, and disabled keys are gray. To re-enable a disabled key, click on the key again. You can disable keys in Game Mode for any individual profile.



NOTE: The **Windows**, **Menu**, and **FN** keys cannot be enabled in Game Mode.

Backlighting

To cycle between five preset brightness levels, press **FN** and **F7** at the same time. You can also invert the F keys so you only need to press F7. See [FN Key Inversion](#) for more information.



NOTE: If keyboard backlighting doesn't turn on, check the [lighting settings](#) in LGS.

FN Key Inversion

You can use LGS to invert all the functions that are accessed by default when you use the FN key modifier with individual F keys. This way you don't need to press FN in combination with the F keys to perform the special functions.

The default FN key combinations are shown below:

Keyboard Shortcut	Function/Feature
FN + F5 (G513 only)	Cycle between 7 onboard lighting effects
FN + F6 (G513 only)	Load user-stored lighting layout
FN + F7	Cycle Backlighting Levels
FN + F8	Toggle Game Mode
FN + F9	Play/Pause
FN + F10	Stop
FN + F11	Previous Track
FN + F12	Next Track
FN + PRTSC (Print screen)	Mute/Unmute
FN + SCRLK (Scroll Lock)	Volume Down
FN + PAUSE	Volume Up

To enable Key Inversion:

1. Launch Logitech Gaming Software (LGS).
2. Select your gaming keyboard.
3. In the **Home** window, push the toggle:
 - **Left** to disable FN Key Inversion
 - **Right** to enable FN Key Inversion



NOTE: The image above shows FN Key Inversion enabled.

- **+List of Logitech Gaming Software default starting profiles**

As of the release of LGS v8.98.234.

- 007 Nightfire
- 2002 FIFA World Cup
- 4X4 Evolution
- Act of War
- Age of Conan: Hyborian Adventures
- Age of Mythology
- Agents of Mayhem
- Aion
- Alien: Isolation
- Aliens vs. Predator - Steam
- Aliens vs. Predator 2
- Allegiance
- Alone in the Dark
- American Truck Simulator
- America's Army
- Anachronox
- Asheron's Call 2
- Assassin's Creed
- Assassin's Creed 2
- Assassin's Creed Brotherhood
- Assassin's Creed IV Black Flag (Multiplayer)
- Assassin's Creed IV Black Flag (Single Player)
- Assassin's Creed Origins
- Assassin's Creed Unity
- Assetto Corsa
- Asura
- Attack Squadron
- Auto Assault
- B17 Flying Fortress
- Baldur's Gate
- Baldur's Gate 2*Shadows of Amn
- Batman: Arkham Asylum
- Batman: Arkham City
- Batman: Arkham Origins (Online)
- Batman: Arkham Origins (Single Player)
- Battle for Naboo
- Battle of Britain
- Battleborn
- Battlefield 1
- Battlefield 1942

- Battlefield 2
- Battlefield 2142
- Battlefield 3
- Battlefield 4
- Battlefield Bad Company 2
- Battlefield Hardline
- Battlefield Vietnam
- BattleZone 2
- Beetle Buggin'
- Beyond Good & Evil
- Bionic Commando - Steam
- Bionic Commando (Steam)
- Bioshock
- BioShock 2 (Multiplayer)
- BioShock 2 (Single Player)
- BioShock Infinite
- Birth of the Federation
- Black Thorn
- BlackHawk Down
- Blacklight Retribution
- BloodRayne
- Blur
- Borderlands
- Borderlands 2
- Borderlands: The Pre-Sequel
- Brink
- Broken Sword
- Brood War
- Brothers In Arms Hell's Highway
- Brothers In Arms: Earned in Blood
- Brothers in Arms: Road to Hill 30
- Bulletstorm
- Burnout Paradise
- C&C Red Alert 2
- C&C Renegade
- C&C Tiberian Sun
- Caesar 3
- Call of Duty
- Call of Duty : Infinite Warfare
- Call of Duty 4 - Multiplayer
- Call of Duty 4 - Single Player
- Call of Duty 4: Modern Warfare (Multi-player)
- Call of Duty 4: Modern Warfare (Single Player)
- Call of Duty Advanced Warfare
- Call of Duty: BLACK OPS
- Call of Duty: Black Ops II (multi player)

- Call of Duty: Black Ops II (single player)
- Call of Duty: Black Ops III
- Call of Duty: Ghosts
- Call of Duty: Modern Warfare 2 (Multi-player)
- Call of Duty: Modern Warfare 2 (Single Player)
- Call of Duty: Modern Warfare 3 (Multi-player)
- Call of Duty: Modern Warfare 3 (Single Player)
- Call of Duty: World at War (Multiplayer)
- Call of Duty: World at War (Single Player)
- Call of Duty: WWII
- Call of Juarez - Bound In Blood (Steam)
- Carmageddon 2
- Champions Online
- Chronicles of Riddick
- City of Heroes
- City of Heroes/City of Villains
- Civ IV: Colonization
- Civilization IV
- Clone Campaigns
- Cloudy With A Chance of Meatballs
- Cold Zero
- Colin McRae Rally 2.0
- Comanche 4
- Combat
- Combat Flight Sim 2
- Combat Flight Simulator
- Combat Flight Simulator 3
- Command & Conquer 3 Tiberium Wars
- Commandos Strike Force
- Conflict Desert Storm
- Counter-Strike
- Counter-Strike Source
- Counter-Strike: Global Offensive
- Crashday
- Crimson Skies
- Cryostasis
- Crysis
- Crysis 2 - Steam
- Crysis Warhead
- Crysis Wars
- Daikatana
- DAoC - Shrouded Isles
- Dark Age of Camelot
- Dark Reign 2
- Dark Souls II
- Dark Souls III

- Dark Void
- Darkspore (Steam)
- Darkstone
- Dawn of War
- Day of Defeat: Source (HL engine)
- DCS Black Shark
- Dead Island (Steam)
- Dead Space 2
- Deadly Dozen
- Deadspace
- Default Profile
- Delta Force 2
- Descent 3
- Desperados 2 Cooper's Revenge
- Destiny 2
- Deus Ex
- Deus Ex: Human Revolution (Steam)
- Deus Ex: Mankind Divided
- Devil May Cry - DirectX 10
- Devil May Cry 4 - DirectX 10
- Devil May Cry 4 - DirectX 9
- Diablo II
- Diablo II - Lord of Destruction
- Diablo III
- Die Hard Nakatomi Plaza
- Dig Dug Deeper
- Dirt
- Dirt 2
- DiRT 3
- DiRT Rally
- Dirt Track Racing
- Dishonored
- Dishonored 2
- Distance
- Divine Divinity
- DOOM
- Doom 3
- Dota 2
- Dragon Age - Origins
- Dragon Age 2
- Dragon Age: Inquisition
- DS Legends of Aranna
- Duke Nukem Forever - Steam
- Dune 2000
- Dungeon Keeper 2
- Dungeon Siege

- Dungeon Siege III
- Dungeons & Dragons Online Stormreach
- El Matador
- Elder Scrolls IV - Oblivion
- Elite: Dangerous
- Emperor RotMK
- Emperor's Tomb
- Empire Earth 3
- Enemy Territory - QUAKE Wars
- Enemy Territory- Quake Wars
- Enter the Matrix
- Escape From Monkey Island
- Euro Truck Simulator 2
- Eurofighter Typhoon
- European Air War
- EverQuest
- EverQuest 2
- Evolve
- Excel 2013
- F.E.A.R.
- F.E.A.R. 2
- F.E.A.R. 3
- F1 2000
- F1 2002
- F1 2015
- F22 Lightning 3
- Fable III
- Falcon 4.0: Allied Force
- Falcon AF
- Fallout 3
- Fallout: New Vegas
- Far Cry
- Far Cry 2
- Far Cry Primal
- Farming Sim 15
- Fate of the Dragon
- FEAR2
- Fellowship of the Ring
- FIFA 2001
- FIFA 2002
- FIFA 2003
- Fighter Ace 2
- Fighter Squadron
- Fleet Command
- Flight Sim 2002
- Flight Simulator 2000

- Flight Simulator X
- Fly 2K
- Fly* II
- For Honor
- Force Commander
- Fortnite
- Freedom Fighters
- Freedom Force
- Freedom Force vs. The 3rd Reich
- Freespace 2
- Frontlines - Fuel of War
- FUEL
- Galactic Battlegrounds
- Garry's Mod
- Gas Guzzlers Extreme
- Gears of War
- Generals
- Ghost Recon
- Ghost Recon AW2 - Single Player
- Ghost Recon Wildlands
- Giants* Citizen Kabuto
- Gigantic
- Global Operations
- Godfather 2
- Gothic
- Grand Prix 3
- Grand Prix 4
- Grand Prix Legends
- Grand Theft Auto Episodes from Liberty City
- Grand Theft Auto III
- Grand Theft Auto V
- Grand Theft Auto: San Andreas - Steam
- GRID
- GRID 2
- GrID Autosport
- Gruntz
- GT Legends
- GTA Vice City
- GTA4
- GTR
- GTR 2
- GTR: Evolution (Offline)
- Guild Wars
- Guild Wars 2
- Gun
- Half-Life

- Half-Life 2, EP1, EP2, Deathmatch
- Halo 2
- Harley* Race Across America
- Harry Potter
- Harry Potter II* COS
- Hawken
- Heavy Gear 2
- Hellgate: London
- Heroes of the Storm
- Heroes V - Might and Magic
- Hidden & Dangerous
- Hidden & Dangerous 2
- High Heat 2003
- High Heat Baseball 2001
- Hitman
- Hitman 2
- Homefront -Steam
- Homefront: The Revolution
- Homeworld Cataclysm
- Homeworld Remastered Collection
- Hunted: The Demon's Forge
- Hydrophobia: Prophecy (Steam)
- Icewind Dale
- Icewind Dale II
- IGI 2 Covert Strike
- IL-2 Forgotten Battles
- IL-2 Forgotten Battles (Steam)
- IL2 Sturmovik
- iRacing
- Ironman
- James Bond: Blood Stone
- Jane's FA-18
- Jane's WWII Fighters
- Jedi Knight II Jedi Outcast
- Jericho
- Just Cause 2
- Kane & Lynch - Dead Men
- Kingdom Come: Deliverance
- Kingdoms of Amalur
- Knights of the Old Republic
- KOTOR 2
- Land Warrior
- LawBreakers
- League of Legends
- Left4Dead
- Left4Dead2

- Legendary
- Lego Batman
- LEGO Harry Potter: Years 1-4
- Lego Indiana Jones The Original Adventures
- Lego Star Wars III: The Clone Wars
- Lego Universe
- Lineage II
- Lock On
- Lord of the Rings Online
- Lord of the Rings: War in the North (Steam)
- LOTR Battle for Middle Earth
- Mad Max
- Madballs In Babo: Invasion (Steam)
- Madden 2002
- Madden 2003
- Madden NFL 2001
- Mafia III
- Magicka (Steam)
- Mass Effect: Andromeda
- Mass Effect
- Mass Effect 2
- Mass Effect 3
- Master of Orion
- Matrix Path of Neo
- Max Payne
- Max Payne 2: The Fall of Max Payne
- MDK 2
- Mech Commander
- MechWarrior 4
- Medal of Honor - Multiplayer
- Medal of Honor - Single Player
- Medal of Honor Airborne
- Medal of Honor Pacific Assault
- Medal of Honor Warfighter
- Medal of Honor* Allied Assault
- Men of War
- Mercenaries 2: World in Flames
- Messiah D3D
- Metal Gear Solid
- METAL GEAR SOLID V: THE PHANTOM PAIN
- Metal Gear Survive
- Michelin Rally Masters
- Middle-earth: Shadow of Mordor
- Middle-earth: Shadow of War
- Midtown Madness 2 *Gamepad*
- Midtown Madness 2 *Joystick*

- Midtown Madness 2 *Wheel*
- Mig Alley
- Might and Magic VIII
- Mirror's Edge
- Mobile 1 Rally
- Monaco Grand Prix 2
- Monopoly Tycoon
- Monster Truck Madness 2
- Morrowind
- Mortal Kombat 4
- Moto Racer 3
- Motocross Madness 2
- MS Baseball 2001
- MS Flight Simulator 2004
- MW 4 Black Knight
- NASCAR 4
- NASCAR Racing 2003 Season
- NASCAR Revolution
- NASCAR Thunder 2004
- Natural Selection 2
- NBA Live 2000
- NBA Live 2003
- Need For Speed High Stakes
- Need for Speed Porsche Unleashed
- Need for Speed SHIFT
- Need for Speed Undercover
- Need For Speed Underground 2
- Neverwinter Nights
- Neverwinter Nights 2
- Neverwinter Online
- NFS 2016
- NFS Hot Pursuit
- NFS Hot Pursuit 2
- NFS Underground
- NHL 2001
- NHL 2002
- NHL 2004
- Night At The Museum 2
- No Man's Sky
- No One Lives Forever
- No One Lives Forever 2
- Nosferatu
- Nox
- Operation Flashpoint
- Operation Flashpoint: Red River
- Overlord

- Overwatch
- Pac-Man Adventures in Time
- Phantom Menace
- Photoshop CC
- Pirates of the Burning Sea
- Pirates!
- Planetside
- Planetside 2
- PLAYERUNKNOWN'S BATTLEGROUNDS
- Pod Racer
- Portal (HL2 engine)
- Portal 2
- Powerslide
- Prey
- Prey (2017)
- Prince Caspian - Chronicles of Narnia
- Prince of Persia
- Project CARS
- Project Cars 2
- Project Eden
- Project IGI
- Prototype
- Pure
- Quake 3 Arena
- Quantum of Solace
- Quidditch World Cup
- R6* Covert Operations
- RACE 07
- RaceRoom
- RAGE
- Railroad Tycoon 2
- Railroad Tycoon 2 Gold
- Railroad Tycoon 2 TSC
- Rainbow Six
- Rainbow Six Siege
- Rainbow Six Vegas
- Rainbow Six Vegas 2
- Rainbow Six: Lockdown
- Rally Trophy
- Raven Shield
- Real War
- Red Faction II
- Red Faction: Armageddon (Steam)
- Red Faction: Armageddon (Steam) (DX11)
- Red Orchestra
- Resident Evil 4

- Resident Evil 5
- Resident Evil 7
- rFactor
- rFactor 2
- Rift
- Rise of Legends
- Rise of Nations
- Rise of Nations: Thrones and Patriots
- Rogue Spear
- Rogue Squadron 3D
- Roller Coaster Tycoon
- Rome Total War
- Rubies of Eventide
- Rust
- Rusty Hearts
- Savage
- Sebastien Loeb Rally EVO
- Section 8
- Section 8: Prejudice
- Serious Sam
- Serious Sam 2nd Encounter
- Serious Sam 3: BFE (Steam)
- Shadowrun
- Shogo Mobile Armor Division
- Sid Meier's Civilization V
- Sid Meier's Civilization VI
- Sid Meier's Railroads!
- Sim Theme Park
- SimCity 3000
- SimCity Societies
- Simpson's Hit & Run
- Sims 2
- Sin
- Sin Episodes Emergence
- Singularity
- Sniper: Ghost Warrior 2
- Soldier Of Fortune
- Soldier of Fortune II
- Soldier of Fortune Payback
- South Park The Fractured But Whole
- Space Interceptor
- Speedway Grand Prix
- Spintires
- Splinter Cell
- Splinter Cell: Conviction
- Spore

- Stalker Clear Sky
- Star Trek Armada
- Star Trek Online
- Star Wars - The Old Republic
- Star Wars Battlefront
- Star Wars Battlefront 2
- Star Wars: Battlefront II
- Star Wars Empire at War
- Star Wars Galaxies
- Star Wars The Clone Wars Republic Heroes (Steam Edition)
- Star Wars: Battlefront
- Starcraft
- StarCraft II
- Starfighter
- StarLancer
- StarSiege
- Starsiege Tribes
- Starsky & Hutch
- StarTopia
- Stock Car Extreme
- Stranglehold
- Sub Command
- Superbike 2001
- Supreme Commander
- Supreme Commander - Forged Alliance
- SW - Republic Commando
- Swat 3
- SWAT 4
- Sydney 2000
- TA Kingdoms
- Tabula Rasa
- Tactical Ops
- Task Force Dagger
- Team Fortress 2 (HL2 engine)
- Tera
- Terraria
- Test Drive 6
- Test Drive Le Mans
- Test Drive Offroad 3
- Test Drive Unlimited
- The Club
- The Crew
- The Darkness II
- The Elder Scrolls V: Skyrim (Steam)
- The Elder Scrolls V: Skyrim Special Edition(Steam)
- The Evil Within

- The Evil Within 2
- The Incredible Hulk
- The Movies
- The Secret of Monkey Island: Special Edition (Steam Version)
- The Settlers - Rise of an Empire
- The Sims 1024
- The Sims 2
- The Sims 800
- The Sims Medieval
- The Sum of All Fears
- The Witcher
- The Witcher 2
- The Witcher 3: Wild Hunt
- Thief 2* The Metal Age
- Thrillville: Off the Rails
- Tiger Woods 2003
- Tiger Woods 99
- TimeShift
- Titan Quest
- Titan Quest - Immortal Throne
- Titanfall
- Titanfall 2
- TOCA 2
- Tom Clancy's H-A-W-K
- Tom Clancy's The Division
- Tomb Raider AoD
- Tomb Raider: Anniversary
- Tonka Monster Trucks
- Tony Hawk 3
- Tony Hawk 4
- Torchlight II
- Trackmania United Forever
- Train Simulator
- Transformers: Fall of Cybertron
- Transformers: War of Cybertron
- Triple Play 2000
- Tron 2.0
- Turning Point - Fall of Liberty
- Tyranny
- Ultimate Demolition Derby
- Universe At War
- Unreal II
- Unreal Tournament 2003
- Unreal Tournament 2004
- Unreal Tournament 3
- US Special Forces

- USAF
- Vampires Bloodlines
- Vendetta Online
- Wacky Races
- Wall-E
- Wanted Weapons Of Fate - Steam
- War Front - Turning Point
- Warcraft 3: The Frozen Throne
- WarCraft III* Reign of Chaos
- Warframe
- WarHammer 40k
- Warhammer 40K Space Marine (Steam)
- Warhammer Online: Age of Reckoning
- Watch Dogs 2
- Watch_Dogs
- Wheelman
- Wolfenstein
- Wolfenstein: The New Order
- Wolfenstein II: The New Colossus
- Word 2013
- World in Conflict
- World of Tanks
- World of Warcraft
- World Racing
- XCOM 2
- XCOM: Enemy Unknown
- X-Wing Alliance
- You are Empty
- Yuri's Revenge
- Zanzarah
- 御龙在天 (Dragon Power)

- **+Create and scan for profiles with Logitech Gaming Software**

Logitech Gaming Software (LGS) includes support for approximately six hundred games as of release 8.91. When you run the software for the first time, it should scan and automatically set up game profiles for you. If you install more games later, you can rescan for supported games and have profiles imported for them. You use profiles to customize pointer, lighting or G-key/function key command assignments for every individual game and application. If you prefer, you can also just use one profile for all your games and applications.

There are two ways to set up profiles for your games or applications:

- [Scan for new games](#)
- [Create new profiles](#)

Scan For New Games

Logitech Gaming Software's game profiles are created using registry entries from either Steam, uPlay, Battle.net, or Origin. Certain game profiles are associated with multiple publisher's registry entries, but the majority are linked to the Steam registry entry, excluding the games that are available exclusively on Battle.net or Origin. See a complete list of games [here](#).

1. Open Logitech Gaming Software (LGS).
2. Navigate to the Home window for your mouse, keyboard or headset.
3. Select **Customize buttons**, **Customize Function keys** or **Customize G-keys** depending on the device.
4. In the Profiles pane, click **Scan For New Games**.



5. Once the profiler has completed its scan, click **OK** to add the profiles to your list.
NOTE: A profile for the selected game should appear in the Profiles pane.

If you own a game that is not automatically detected by the Scan for New Games feature, you can make a few minor adjustments to set up the profile. For more information, please see [Scan For New Games does not detect game in Logitech Gaming Software](#).

Create new profiles

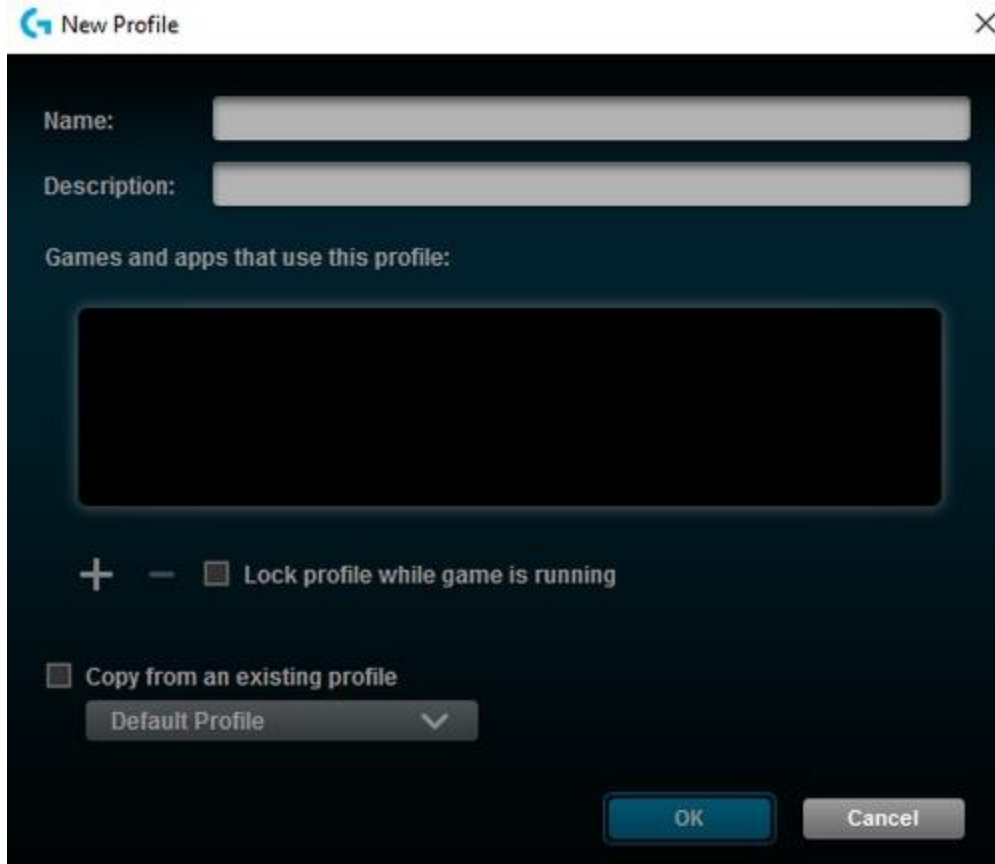
If the Scan For New Games list does not contain the game you want, LGS offers the ability to create your own profile. Here's how:

TIP: LGS can store profiles for any program executable (.exe) file. Use this to customize commands assignments for productivity programs.

1. Open Logitech Gaming Software (LGS).
2. Navigate to the Home window for your mouse, keyboard or headset.
3. Select **Customize buttons**, **Customize Function keys** or **Customize G-keys** depending on the device.
4. In the Profiles pane, click **Create new profile** ("+").



The **New Profile** window appears:



5. Type distinct names for your profile in the **Name** and **Description** boxes.



6. Click “+” and use the Windows Explorer window that appears to navigate to and open your executable (.exe) file.
NOTE: You can assign multiple executable files to the same LGS profile.
7. Select the checkbox to **Lock profile while game is running** to prevent other profiles from becoming active while your game or application is running.
8. If you prefer to use another profile’s lighting, command assignment or pointer settings as a starting point, select the checkbox to **Copy from an existing profile**. Use the drop-down menu to select a profile to copy settings from.
9. Click **OK** to save changes and add the new profile.
NOTE: A new profile for the game or application should appear in the Profiles pane.

- **+View current profiles in Logitech Gaming Software**

To see your current gaming profiles in Logitech Gaming Software (LGS) for your gaming mouse, keyboard or headset:

1. Open Logitech Gaming Software
2. Select your product by using the arrows at the bottom left of the LGS window.



3. Do one of the following, depending upon your device type:
 - Mouse — click **Customize Buttons** if your mouse is in Automatic Game Detection mode. Click **Customize on-board profile** if your mouse is in On-Board Memory mode.



- Keyboard — click **Customize Function Keys** or **Customize G-Keys**.



- Headset — click **Customize G-Keys**.



4. The profiles you've created will show in alphabetical order in the **Profiles** area at the top of the window.



- **+Digital signature error when Logitech Gaming Software is installed on Windows 7 computers**

You may see a digital signature error when you install Logitech Gaming Software (LGS) on some Windows 7 computers. All recent versions of LGS require the following Microsoft Windows security update to be installed prior to installing LGS:

- Security Update for Windows 7 Systems (KB3033929)

The security update adds support for SHA-2 driver signing and verification functionality. There are two versions — one for Windows 7 32-bit (x86) and one for Windows 7 64-bit (x64). Make sure you've downloaded and installed the correct version for your computer before you install LGS.

- **+Logitech Gaming Software for Windows Release Notes**

- [Version 8.98.234](#)
- [Version 8.96.88](#)
- [Version 8.94.108](#)
- [Version 8.92.67](#)
- [Version 8.91.48](#)
- [Version 8.90.117](#)
- [Version 8.89.68](#)

Version 8.98.234

- **Post Date:** 18-APR-2018
- **OS:** Windows 8, Windows 7, Windows 10
- **Why Update?**
 - Added support for:
 - G560 LIGHTSYNC PC Gaming Speaker
 - G513 Silver RGB Mechanical Gaming Keyboard
 - G513 Carbon RGB Mechanical Gaming Keyboard
 - G512 Carbon RGB Mechanical Gaming Keyboard
 - Improved the UI for C920 & C922 cameras to be more consistent with other supported cameras
 - New game profiles:
 - Assassin's Creed Origins
 - Call of Duty: WWII
 - Destiny 2
 - Fortnite
 - Kingdom Come: Deliverance
 - Metal Gear Survive

- Middle-earth: Shadow of War
 - Project Cars 2
 - South Park The Fractured But Whole
 - Star Wars: Battlefront II
 - The Evil Within 2
 - Wolfenstein II: The New Colossus
- Minor bug fixes.

Version 8.96.88

- **Post Date:** 21-AUG-2017
- **OS:** Windows 8, Windows 7, Windows 10
- **Why Update?**
 - Support added for:
 - G603 Wireless Gaming Mouse
 - G613 Wireless Mechanical Gaming Keyboard
 - Brio 4K Streaming Edition Webcam
 - Added a firmware update for the G102 and G203 to increase the max sensor DPI to 8000
 - Added option to gather anonymous data to help us understand how LGS is used so we can improve it in future releases
 - New game profiles for:
 - Agents of Mayhem
 - Gigantic
 - LawBreakers
 - Minor bug fixes

Version 8.94.108

- **Post Date:** 19-JUN-2017
- **OS:** Windows 8, Windows 7, Windows 10
- **Why Update?**
 - Added support for
 - G433 Gaming Headset
 - POWERPLAY Wireless Charging System
 - G903 LIGHTSPEED Wireless Gaming Mouse
 - G703 LIGHTSPEED Wireless Gaming Mouse
 - New game profiles:
 - Prey (2017)
 - PLAYERUNKNOWN'S BATTLEGROUNDS
 - Added a firmware update for the G403 and G900 to optimize clock tuning parameter

- Fixed an issue with localized layouts not being correctly displayed for the G413
 - Fixed an issue where a user's custom lighting would be reverted to the HW default when locking their system
 - Minor bug fixes
-

Version 8.92.67

- **Post Date:** 19-APR-2017
 - **OS:** Windows 8, Windows 7, Windows 10
 - **Why Update?**
 - Added support for the G413 Mechanical Gaming Keyboard
 - New game profiles:
 - For Honor
 - Ghost Recon Wildlands
 - Mass Effect: Andromeda
 - Resident Evil 7
 - Minor bug fixes
-

Version 8.91.48

- **Post Date:** 4-JAN-2017
 - **OS:** Windows 8, Windows 7, Windows 10
 - **Why Update?**
 - Added support for the G90 gaming mouse
 - Added a link to Overwolf in the LGS user interface
 - Minor bug fixes.
 - Added support for the Pro mechanical gaming keyboard
-

Version 8.90.117

- **Post Date:** 4-JAN-2017
- **OS:** Windows 8, Windows 7, Windows 10
- **Why Update?**
 - Support added for G533 Gaming Headset
 - Minor bug fixes

Version 8.89.68

- **Post Date:** 15-DEC-2016
- **OS:** Windows 8, Windows 7, Windows 10
- **Why Update?**
 - Custom Lighting Effects Editor added to the Lighting View for per-key RGB keyboards.
 - Fix to address stuck mic mute issue on G933 headset.
 - New game profiles:
 - Battlefield 1
 - Call of Duty: Infinite Warfare
 - Mafia III
 - Watch Dogs 2
 - Elder Scrolls V: Skyrim Special Edition
 - Sid Meier's: Civilization VI
 - Titanfall 2
 - Dishonored 2
 - Tyranny
 - Optional G610 Orion keyboard firmware update to address a high-pitched whine on some keyboards.
 - Firmware updates for the following keyboards to enhance lighting performance with the new Lighting Effects Editor:
 - G410 Altas Spectrum
 - G810 Orion Spectrum
 - G910 Orion Spectrum
 - G910 Orion Spark
 - Added an option to the G933 FW update tool allowing the user to choose between G933 and G933 Snow, so that the proper device image will show in LGS after a firmware update.
 - Minor bug fixes.

• +Customize gaming keyboard function keys with Logitech Gaming Software

You can use Logitech Gaming Software (LGS) version 8.91 and later to assign G-key commands to the function keys on your gaming keyboard.

- [Default function key layout](#)
- [Customize function keys](#)
- [Game-specific profile commands](#)
- [Command Editor](#)
- [Reset function keys](#)

Default function key layout

The default function key layout on your gaming keyboard utilizes the standard F1-F12 layout found on most keyboards.



Customize function keys

1. Make sure the gaming keyboard is connected to your computer, and then launch LGS.
2. Click on the icon for your gaming keyboard.
3. Click on **Customize Function Keys**.
4. Click on the profile for the function keys you want to customize.
5. To assign a command to a function key, do one of the following:
 - Double-click on the listed function key command assignment to begin assigning a new command.
 - Drag and drop an existing command from the **Commands** list in the left pane onto a function key. When you drag a command over the function key, the function key area will become highlighted.
6. You can also right-click on a function key or its assignment for additional options:



- **Assign New Command** — click to open the Command Editor window.
- **Edit Command** — click to open the Command Editor window.
- **Unassign** — click to remove all command assignments from the selected function key.

Game-specific profile commands

LGS can be used to create new or to import LGS preset game profiles for compatible Logitech gaming keyboards. These profiles allow you to create customized function key configurations for compatible games on your computer.

Once you select a game-specific profile, you can drag and drop standard, custom, or LGS preset game-specific commands from the **Commands** list onto the gaming keyboard's function keys (where applicable).

Command editor

You can use the Command Editor to customize function key command assignments on your gaming keyboard.

1. Double-click on either an unassigned or assigned function key to open the Command Editor. You can create or edit a command using the following customization options:
 - **Keystroke** — assign a single key press or a key press with modifiers.
 - **Multi Key** — assign a "macro'd" series of keystrokes (either with or without recorded time delays).
 - **Text Block** — create a block of text to be typed out when the function key is pressed (either with or without Unicode support).

- **Mouse Function** — assign a function key to use any of the available mouse functions.
 - **Media** — set a function key to control media playback or volume.
 - **Hotkeys** — use a predefined keystroke command.
 - **Shortcut** — assign a function key to launch a file, folder, drive, or Web page on your computer.
 - **Function** — assign a function key to act as a Microsoft function key (ex. to open your web browser).
 - **Audio** — set a G-key to activate an audio command.
 - **Ventrilo** — assign a function key for Ventrilo commands, if installed on your computer.
2. Click **OK** to assign the desired command to the function key. The command's name will be visible over that function key in the Customize Function Keys window.

Reset function key assignments

To reset a single function key command assignment:

1. From the Customize function keys window, navigate to the **Profiles** area in the top-right corner.
2. Click on the profile for the function key you wish to reset.
3. Right-click on the function key and select one of the following options from the pop-up menu that appears:
 - **Use Generic** — click to revert the selected function key assignment to its generic function.
 - **Unassign** — click to remove all assignments from the selected function key.

NOTE: You can also remove all assignments aside from generic functions by dragging the current command from the function key to the trash icon (located at the bottom-right corner of the Commands list).

To reset all function key command assignments:

1. From the **Profile** area at the top-right corner of the LGS windows, select the profile for which you wish to reset all function key command assignments.
2. Right-click on the profile and then click **All G-keys** from the pop-up menu that appears.



3. Select one of the following options from the pop-up menu:
 - Click **Use Generic** to revert all function key assignments to their generic functions.
 - Click **Unassign** to remove all command assignments from all function keys.
- NOTE:** Gray-colored text menu items are not accessible.