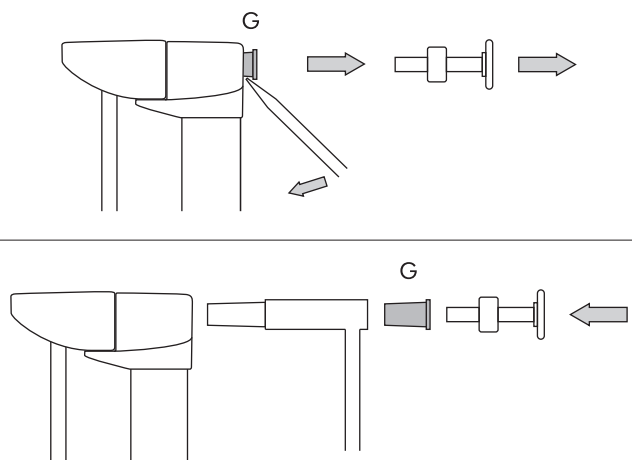


For maximum stability you should try and achieve your required width using a minimum number of extensions (i.e. 1 x 14cm is preferred to 2 x 7cm), and if 2 or more extensions are fitted on the same side make sure the 7cm extension is nearest the gate. Some suggested configurations are pictured. To fit your extension system (available separately) first remove the screw adjusters from your gate. Prise the plastic bungs (G) from each corner of your gate from below using a flat screwdriver. Push the extension into place and press the plastic bungs back into your extension where required. Slide the screw adjusters back into place and fit your safety gate as instructed in the **FIXING YOUR GATE** section. *Note: 4 wall cups must be used when using an extension.* If a second or third extension is required, repeat this procedure on the other side of your gate. Extensions can be purchased from our website at www.lindam.com



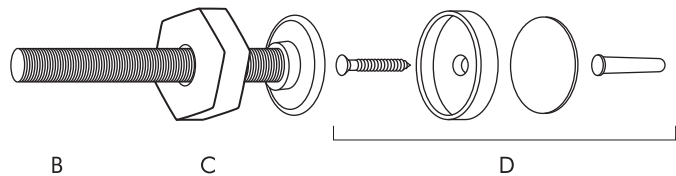
7

INTRODUCTION

Please take a few minutes to read your instructions fully to ensure the full safety benefit of your gate. Please note: In the event of damage or loss, plastic components are only available from Lindam. For parts or assistance please call the Lindam careline on: **0871 702 1000** (Monday - Friday 10am - 4pm UK only) or email careline@lindam.com

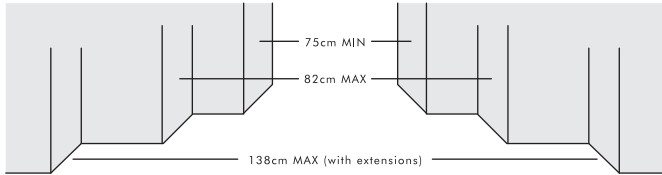
Check that you have all the contents as per the list.

- A) Your safety gate
 - B) 4 Screw Adjusters
 - C) 4 Locking Nuts
 - D) Bag containing 2 Wall Cups with 2 Screws, 2 Wall Plugs and 2 Sticky Pads.
 - E) 1 Spanner
 - F) 1 Gate Stop
- If any component parts are missing or damaged do not use your gate.



WHERE TO FIX YOUR GATE

Your gate is ideal for restricting access to any room in your home from kitchens to bedrooms and may be used to span hallways, doorways or appropriate stairways. Check the width of the opening in which you intend to fit your Lindam Gate. The smallest opening is 75cm and the largest opening is 82cm. **IMPORTANT:** Do not attempt to use this gate in openings larger than 82cm. For openings greater than 82cm, extensions are available from Lindam (see page 6). Due to the nature of the pressure fit fixing method this gate must be used in a strong and secure opening. Ensure all surfaces are clean and free of loose materials.



1

SAFETY TIPS

- This safety barrier will not necessarily prevent all accidents. Never leave children unattended.
- A daily check on the gate is recommended to ensure that your gate remains securely fixed.
- Eventually your child will reach an age at which they are capable of opening your gate. Children will develop physically and mentally at different rates, therefore it is important that you monitor your child's capabilities.
- Never allow young children to swing on the gate.
- Ensure that the gate is properly closed at all times.
- The gate is designed for indoor use only.
- A swinging gate can trap small hands.
- For children over 24 months of age parental supervision is advised.
- Do not allow older children to climb on or over the gate as this can result in an accident.
- Do not remove the safety notices, you may not always be the user.
- If you require spare parts for your gate please obtain them direct from Lindam Ltd.
- Retain these instructions as you may wish to reposition the gate.
- **WARNING!** Incorrect fitting or positioning of this safety barrier can be dangerous
- **WARNING!** Stop using the barrier if the child is capable of climbing it.
- **WARNING!** Do not use the safety barrier if any components are damaged or missing.
- **WARNING!** Do not leave this gate open at any time. Remove the gate if not in use for long periods.
- **WARNING!** This barrier must not be fitted across windows

It should only take 5 minutes to fit your gate. We recommend that you carry out the installation away from young children as some of the smaller components may present a choking hazard when loose.

CLEANING

Simply wipe with a soft damp cloth. Do not use harsh or abrasive cleaning agents.

5

FIXING YOUR GATE

Please refer to the pictures opposite. Slide the 4 screw adjusters into the plastic bungs at each corner of your gate. **Your gate must be fitted with wall cups**, these should be placed around the top 2 screw adjusters (F). Place the gate into the required opening, in the closed position. To ensure that you secure the gate correctly, begin with the screw adjusters at the bottom of the gate. Ensure that your gate is central, slide out the adjusters and secure by fully tightening the locking nuts. Next, adjust the top screw adjusters, once again ensuring that your gate is central. Tighten the locking nuts until the handle is aligned. Once the bars of the inner and outer frame are parallel you can mark the position of your wall cups with a pencil. Remove the gate and secure your wall cups to your wall, doorway or stairway using the sticky pads or screws provided (Do not use sticky pads on wall paper or where there may be other loose materials).

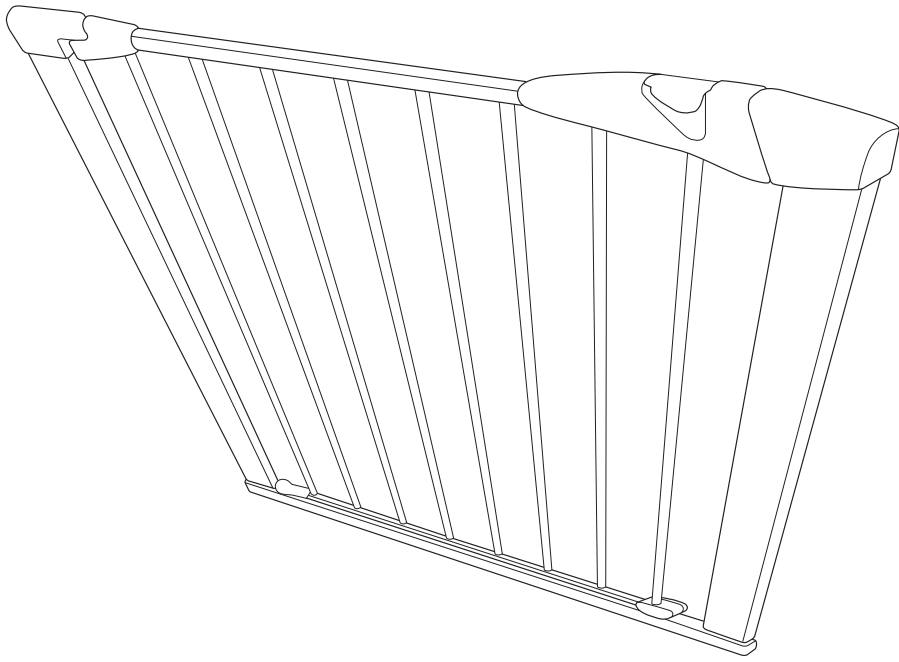
If using the screws, first drill a 1/4" (6mm) hole into your wall and insert the wall plug, then secure the wall cup with the screw. If you are drilling into plaster board you will need to purchase expandable wall plugs (available from DIY stores).

You can now refit the Safety Gate as instructed above.

Check that your gate is securely fitted. This check should be repeated daily to ensure that your gate remains securely fixed and that all attachments and locking devices are operating correctly.

Lindam

sure shut axis



IMPORTANT KEEP FOR FUTURE REFERENCE

THIS SAFETY GATE IS SUITABLE FOR CHILDREN UP TO 24 MONTHS OF AGE
This gate complies to EN 1930:2000 when fitted as instructed
customer careline 0871 702 1000 (Mon - Fri, 10am - 4pm, UK only)
Lindam Limited Hornbeam Park Harrogate HG2 8PA England www.lindam.com
product code: 44428

CLEANING

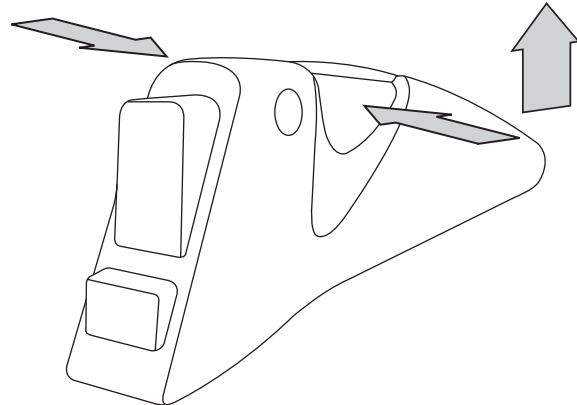
Simply wipe with a soft damp cloth. Do not use harsh or abrasive cleaning agents.

USING YOUR LINDAM SAFETY GATE

To open your gate: Press the two buttons and lift the lever in one action

To close your gate: Align the handle with the frame and lower the lever until it clicks into place.

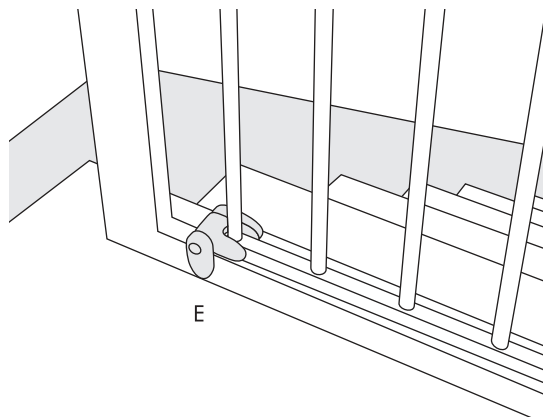
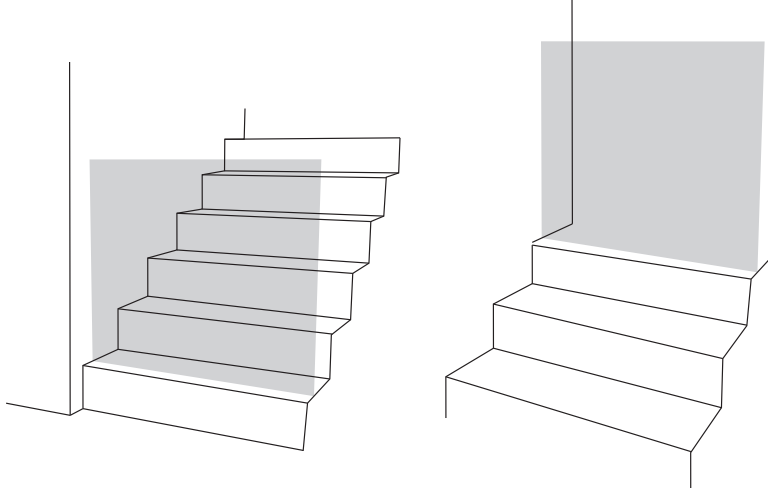
The gate stop at the bottom of your gate may be set to restrict the opening of the gate to one direction only. It also acts as a further locking device which should be used, especially on stairs.



6

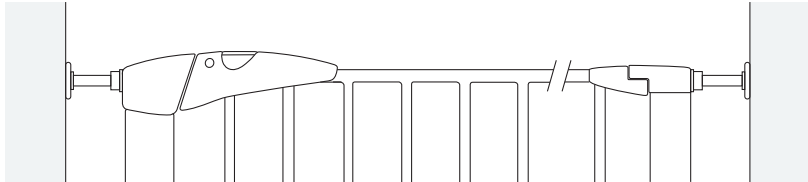
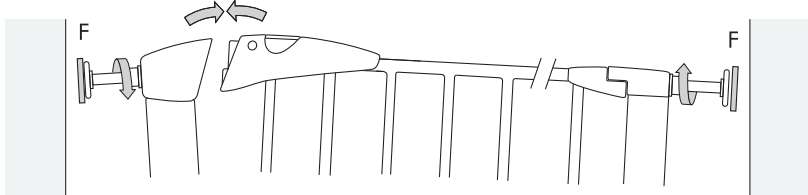
NOTES ON STAIRCASE POSITIONING

WARNING: The position of your safety barrier in relation to the stairs is very important for your child's safety. Your gate may be better positioned across your landing to prevent access to the stairs completely. If you do require your gate to be positioned at the top of the stairs to prevent your child descending, the gate must be fitted on the very top stair. You should turn down one gate stop (E) to prevent the gate swinging out over the stairs (see page 4 for fitting instructions). If you intend to use the gate at the bottom of the stairs then it must be placed on the lowest stair, towards the front of the step, away from the 2nd step.



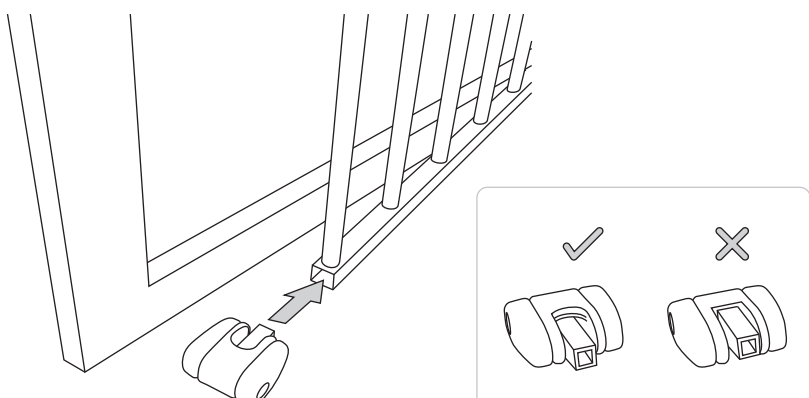
When passing through a gate at the top of a staircase, particular attention should be paid to the bottom bar of the U shaped frame to avoid tripping.

2



ATTACHING YOUR GATE STOP

Simply push your gate stop onto the bottom corner of the gate section. Ensure it is the correct way up as shown in the diagram below or it will impede the closing of your gate.



4

3