

User Guide

Set up your device

1. First, follow the directions in this section of user help. The Quick Start Guide included in the box contains images that can help.
 - Attach any stands that are included with your device.
 - Set up your work area.
2. After you set up your device, follow the directions in the **Get started** section of this user help so you can start using your device.
 - Connect your device to your computer.
 - Install the driver.

Set up your work area

- Position your tablet, pen, and keyboard for easy access.
- Adjust your monitor so you can view it comfortably without eyestrain, placing it about one arm's length away from you.
- Position the tablet so the screen cursor follows the same direction as your hand movements on the tablet.
- If you are using the tablet as a creative tool, consider placing the tablet below the keyboard and centered below your monitor.

Install the driver

Important: You must install the driver for your device to work properly, unless your device comes with a pre-installed driver. Refer to the Quick Start Guide to discover if your device has a pre-installed driver or not.

1. Go to the Wacom [drivers page](#).
2. Click **Download** next to the latest driver that corresponds to your computer's operating system.
3. Follow the prompts to finish the driver installation.

Update the driver

Updated drivers are available on the [Wacom Desktop Center](#) and at the Wacom [drivers page](#) periodically. Check in and update regularly so that your device has the latest features and functionality.

- From the Wacom Desktop Center, select **Updates**, and then click the update to install it.

- If the Wacom Desktop Center is not available for your device, go to the Wacom [drivers page](#) to find the latest updates.

Note: Your device will not work if you uninstall the driver. If you uninstall the driver, reinstall the latest driver from the [drivers page](#) so that your device works again. If the driver is reinstalled, your device will revert to default settings.

Get started with your pen tablet

The Quick Start Guide included in the box with your device contains images that can help you to set up your pen tablet.

1. Connect your device to your computer.
2. [Install the driver](#) software on your computer.

Access user help

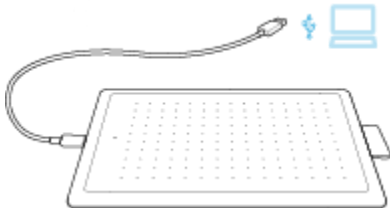
- Access user help topics directly from [Wacom Tablet Properties](#). When you click the ? icon, you are directed to a help topic about the feature you are currently using.
- Open user help from the [Wacom Desktop Center](#) **Help** menu.

Notes

- User help is common to Windows and Mac computers. Screenshots are from a Windows computer, unless otherwise noted.
- Information about your specific computer hardware, operating system, and application software is not included. Refer to the product information provided with those products.

Connect to your computer

- Connect your tablet to your computer by the USB cable included with your device.

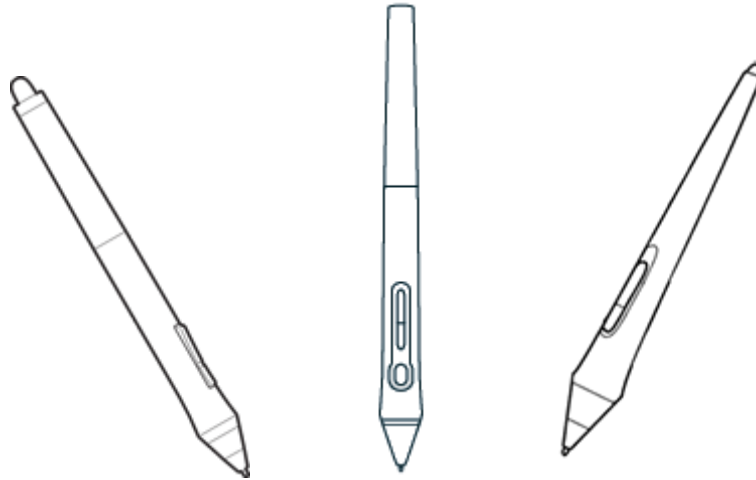


- [Install the driver](#) and start using your tablet.

⚠ WARNING: Make sure to use the USB cable included with your pen tablet. Other cables are not compatible and may damage it. To purchase replacement cables, go to the [Wacom Store](#).

Work with your pen

All pen tablets and pen displays include a cordless, battery-free pen that you use to interact with your device. You can hold, write, and draw as you normally would with a pen or pencil.



Pen styles vary depending on the pen tablet or pen display that you purchased.

Personalize your pen with a color ring

If your pen includes color rings, you can use them to identify and personalize your pen.

1. Unscrew the cone near the pen tip.
2. Remove the color ring that is already on the pen and slide on your preferred color ring.
3. Replace the cone.

Specialty pens

Pens designed for more advanced work, such as the Wacom Pro Pen 3D, Art Pen, or Airbrush, can be used with many pen tablets and pen displays.


To discover other pens and tools that can be used with your pen tablet or pen display, go to the [Wacom Store](#).

Use your pen

Use your pen to interact with your device. This includes drawing, writing, or moving items, and activating settings that you assign to pen buttons.

Tips:

- Hold the pen as you would normally hold a pen or pencil. Adjust your grip so that you can press any pen buttons easily with your thumb (recommended) or index finger without accidentally pressing it.
- To make it easier to access tools in applications like Adobe Photoshop, assign modifiers, such as Alt and Ctrl, to your pen buttons so that you do not have to use your keyboard keys.

 **Important:** You can customize [user options](#) that change the way your pen works with your device. Try both **Pen Button modes** to see which works best for you.

Pen tip and eraser

- **Draw or sign:** Draw or sign with the pen tip directly on the device surface.

Note: Pens are pressure-sensitive, so the harder you press, the thicker your lines and the denser the color.

- **Move the cursor:** Move the pen while holding it slightly above the device without touching the screen surface.
- **Double-click:** Quickly tap the screen twice in the same place with the pen tip.
- **Erase:** Flip the pen to the side opposite the pen tip and move the eraser over the area you want to erase, just as you would use the eraser on a pencil.

Note: Some pens do not have an eraser.

- **Select an item:** Tap the screen once with the pen tip.
- **Move an item:** Select the item with the pen tip, then slide the pen tip across the screen to move it.

Pen buttons

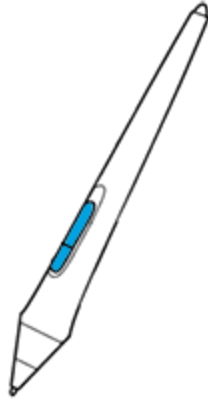
Use pen buttons as shortcuts to [settings](#). You can view and change the assigned settings on the **Pen** tab in [Wacom Tablet Properties](#).

Note: Some pens do not have buttons.

You activate settings differently depending on your [Pen Button mode](#).

- If your [Pen Button mode](#) is **Hover Click**, then hold the pen tip slightly above the surface of your device and press the button.
- If your [Pen Button mode](#) is **Click & Tap**, then touch the device surface and press the pen button.

If your pen has a long, thin button, press the upper part of the button for one setting and the lower part for another.



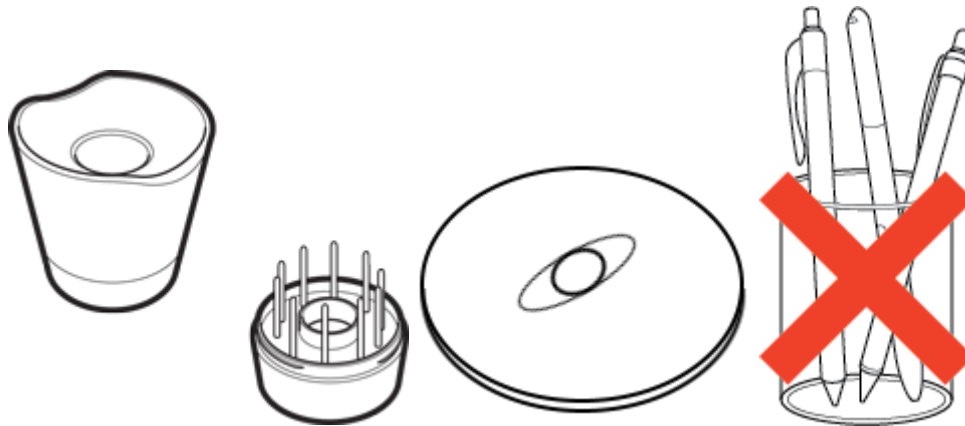
Store your pen

Store your pen properly keep it in good condition and help the pen tip last longer.

! Important: Store your pen so there is no pressure on the pen tip or eraser.

- If your device has a pen stand, store the pen with the tip down in the stand.
- If your device included a pen case, store the pen in the pen case.
- If your device has a pen sleeve, holder, or tray, the pen can be stored there.

Tip: Do not leave the pen on the device when you are not using the pen. This might cause issues when you are using a mouse and might prevent your computer from going to sleep.



Pen stands vary depending on the pen tablet or pen display that you purchased.

Customize your pen functions

Customize your pen functions by assigning settings to pen buttons, adjusting the pen tip feel and pressure, and selecting how you perform a right-click.

Note: Some pens do not have buttons or an eraser.

Assign settings to the pen button and pen tip

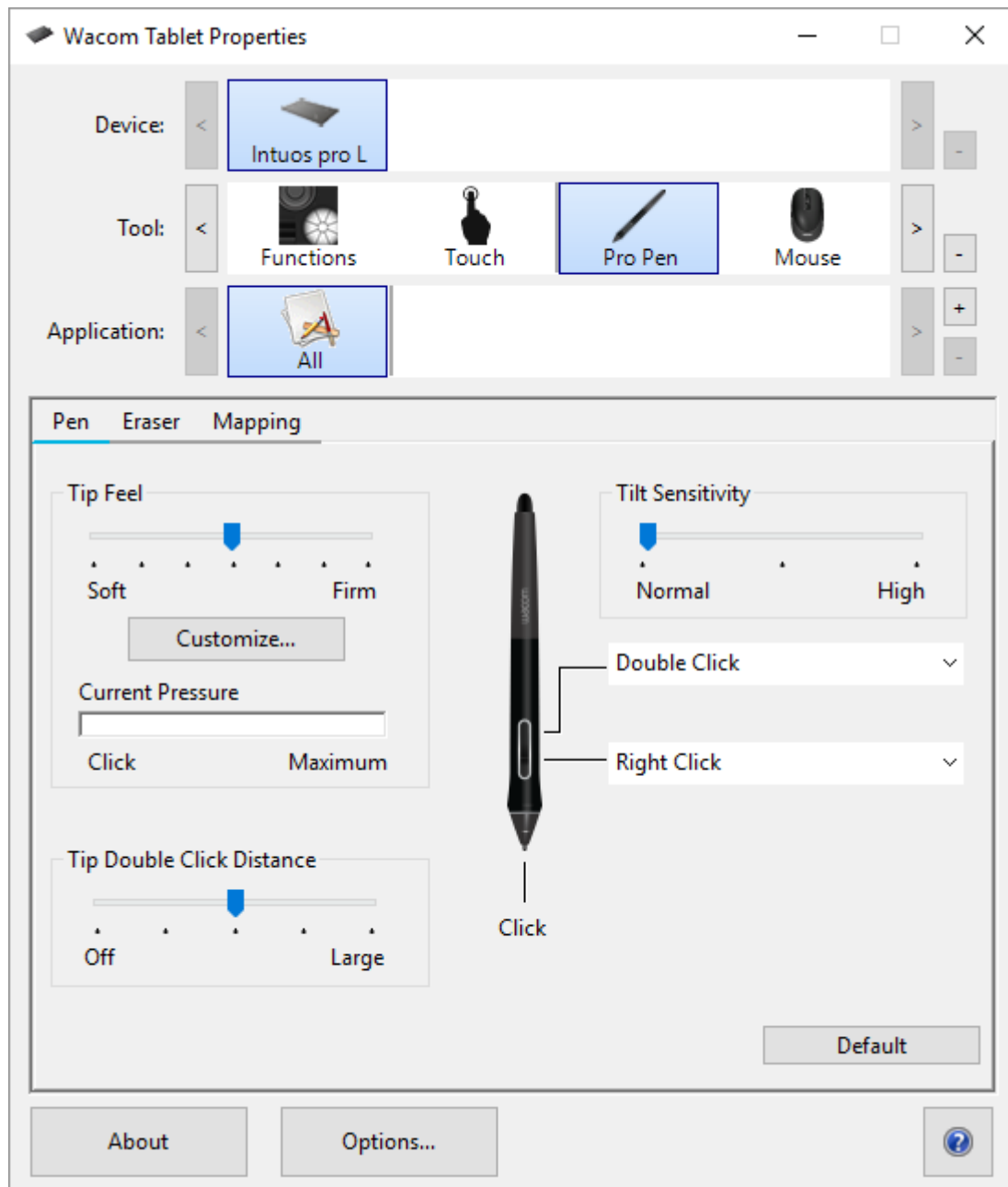
1. [Open Wacom Tablet Properties.](#)

Note: The options available in Wacom Tablet Properties will vary depending on your device.

2. If there is a **Tool** row, select your pen.
3. Select the **Pen** tab.
4. For each of the pen buttons, select the setting you want from the drop-down menu next to the pen.
5. For the pen tip, double-click the pen tip in the image to display a drop-down menu. Then, select a setting for the pen to perform when you tap the tablet surface with it.



Warning: The tip must be set to **Click** in order to draw for most graphics applications.



The above screenshot is for descriptive purposes; it may not match your screen.

Customize other pen properties

- **Tip Double Click Distance:** To change the distance between your pen and the tablet surface during a double-click, move the slider.
- **Current Pressure:** To see how hard you need to press with the pen, check your Current Pressure by pressing down with the pen tip or eraser in an empty area of the Wacom Tablet Properties window.
 - If you want to change the amount of pressure you need to use the pen tip or eraser, move the **Tip Feel** and **Eraser Feel** sliders.

- **Options:** To select the way you right-click with the pen, click Options and select a different **Pen Button Mode**.
- **Tilt Sensitivity:** To change how much the tilt of your hand affects your pen strokes, drag the slider. Open an application that supports tilt to test while you are adjusting, so you can see how your changes affect your strokes.
- **Pen Feel Details:** To change the tip sensitivity, click **Customize** and adjust advanced pen and eraser options.

Tips:

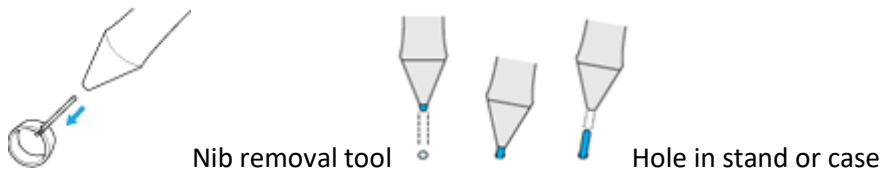
- Set the pen tip to **Click** and one of the pen buttons to **Double-Click**.
- If you want a narrower range of pressure values in a pressure-sensitive application, select a soft **Tip Feel**.
- If the pen overreacts to slight pressure, try a firmer **Tip Feel** setting.
- If you notice a delay at the beginning of brush strokes, inking strokes, or drag actions, try a smaller **Tip Double Click Distance** or set a pen button to double-click instead of the pen tip.
- You can return the pen to default settings by going to the **Pen** tab in [Wacom Tablet Properties](#) and clicking **Default**.

Replace the pen nib

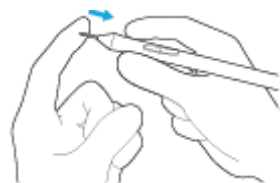
Tip: Replace your pen nib when it is approximately 1 mm (1/25 inch) or has a sharp edge.

1. Grab the old nib and pull it out of the pen.

You can also use the nib removal tool to remove your pen nib. There is a small hole in the pen stand, case, pen end, or pen holder depending on what was included with your device.



2. Get a replacement nib and slide the end of the new nib straight into the barrel of the pen.



3. Push the nib in slowly and firmly until it stops.

Where to find replacement nibs

The extra nibs are stored in different places for different devices. First, look in the box that your device was packaged in. If you do not see the nibs there, try these places:

- If your device included a pen case, check there.
- If your device has a removable compartment cover on the back, slide it open.
- If your device included a pen stand, unscrew the pen stand.
 - **Tip for the Pro Pen 2 stand:** To screw the stand back together, line up the dots on the bottom of the stand and the recess. Then, gently guide the bottom of the stand to the right until you feel it click into place.
- If your device includes a pen holder attachment, check there.

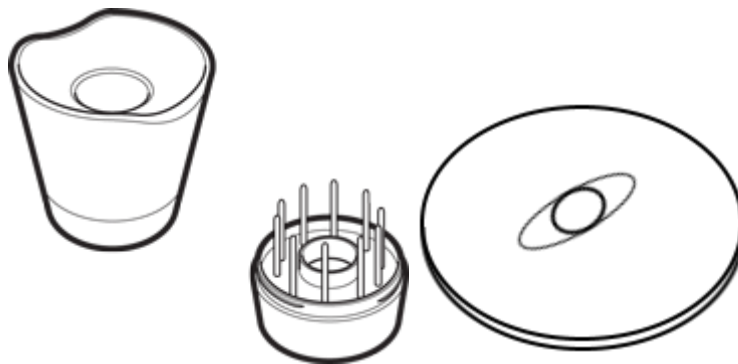
If you need more nibs, you can purchase them from the [Wacom Store](#).

Where to find the nib replacement tool

For some devices, the nib replacement tool is a metal ring included with your device.

For other devices, you will need to use the nib replacement hole to remove your pen nib. The nib replacement hole can be found in a variety of places depending on your device.

- On the bottom of your pen stand
- On the pen storage case
- On the pen holder attached to your device



Pen stands vary depending on the pen tablet or pen display that you purchased.

Customize your device in Wacom Tablet Properties

You can customize your device, pen, and other tools in Wacom Tablet Properties so that they work the way you want. [Open Wacom Tablet Properties](#) to view the settings [you can customize](#).

Note: The options available in Wacom Tablet Properties will vary depending on your device.

What can I customize in Wacom Tablet Properties?

- Assign **Functions** to components like ExpressKeys™, Touch Rings, Rocker Rings, Touch Strips, pen buttons, and the pen tip.
- Select the settings that you want **Touch** gestures to activate.
- Assign settings that change depending on which application you are using by creating **Application Specific** settings.
- Create and assign **On-Screen Controls**, such as Screen Key panels and Radial menus.
- Define which devices to switch between when you **Display Toggle**, if you are using multiple devices or monitors.
- Return the settings on the tab that you are viewing to **Default** settings.
- Set advanced **Options**, such as how your pen tip performs clicks.

Where can I access settings and other options in Wacom Tablet Properties?

- **Device list**
 - There is an icon in this list for each device that is currently connected to your computer. To add a new device to this list, connect it to your computer.
 - Select a device from the **Device** list to view the **Functions** and **Touch** settings for it.
 - For some products, the Device List will not be present when only one tablet is attached.
- **Tool list**
 - There is an icon in this list for each tool that you recently used on this device. To add a new tool to this list, use the tool on your device.
 - Select a tool to view the settings for it.
 - Select **Functions** to view the settings for the device that you selected from the Device list, such as settings for ExpressKeys™ and Touch Rings.
 - For some products, the Tool List will not be present.
- **Application list**
 - Select **All** from the **Application** list to view the settings that apply across all applications.
 - If you created [Application Specific Settings](#), select an application icon from the **Application** list to view the settings that are specific to that application.
- **About button**: Select **About** to view software version information and access the **Diagnose** tool that can help you test your device.
- **? icon**: Select the ? icon to view User Help topics for the settings that you are currently viewing.

Open Wacom Tablet Properties

Once you open [Wacom Tablet Properties](#), you can view customizable settings for your device and tools.

Note: The tabs and options that you see in Wacom Tablet Properties will vary depending on your device.

To open Wacom Tablet Properties:

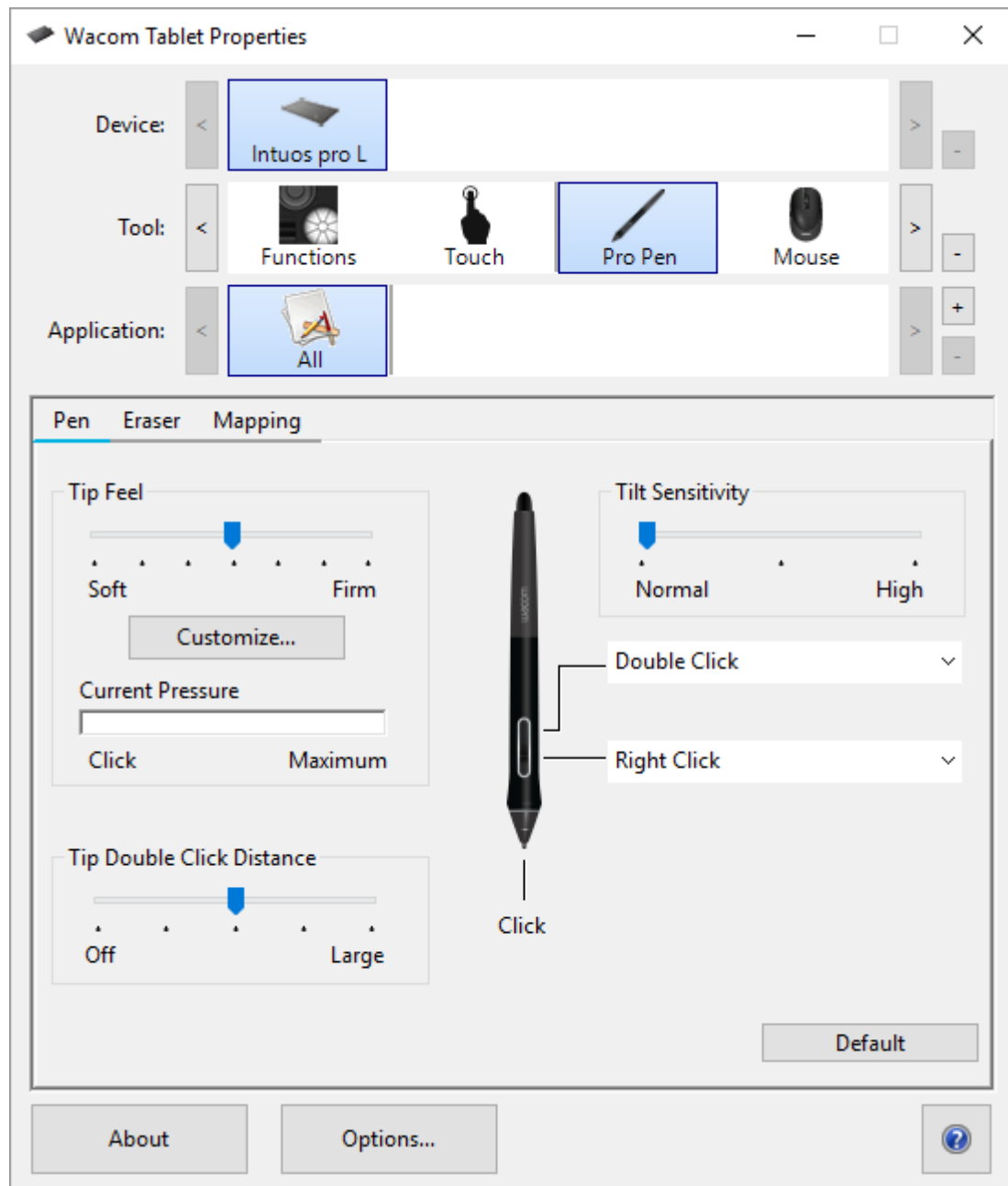
- **Windows and Mac:** If supported by your device, you can open Wacom Tablet Properties from the **Wacom Desktop Center**. Click on the name of your device under **My Devices**, and then select one of the settings.
- **Windows 10:** Click on the Windows Start button and select **Wacom Tablet > Wacom Tablet Properties**.
- **Windows 8.1:** Right-click in the bottom left-hand corner of the Start screen. Select **Wacom Tablet > Wacom Tablet Properties**.
- **Windows 8.1 Classic View:** Press the Windows key on your keyboard or select the Windows icon in the Charms bar to access the Start screen. Right-click in the bottom left-hand corner of the screen. Select **Wacom Tablet > Wacom Tablet Properties**.
- **Windows 7:** Click on the Windows Start button and select **All Programs**. Select **Wacom Tablet > Wacom Tablet Properties**.
- **Mac:** Open **System Preferences** from the Apple menu or from the Applications folder and click on the **Wacom Tablet** icon.

Assign settings in Wacom Tablet Properties

You can set a customizable component of your device to perform a specific function so that you can easily access your frequently used settings. Some examples of customizable components are ExpressKeys™, pen buttons, the pen tip, Touch Rings, Rocker Rings, On-Screen Controls, touch gestures, and Touch Strips.

Note: The customizable components and the options available in Wacom Tablet Properties may vary depending on your device.

1. [Open Wacom Tablet Properties](#).
 - **Note:** Make sure that your device is connected to your computer or Wacom Tablet Properties will not open.



The above screenshot is for descriptive purposes; it may not match your screen.

2. Select your **Device**.
 - Any settings that you customize apply to this device only, except for On-Screen Controls.
 - For some products, the Device List will not be present when only one tablet is attached.
3. Select the **Tool** you want to customize.
 - If you want to assign settings to customizable components, like ExpressKeys™ or On-Screen Controls, select **Functions** from **Tools**.
 - If you want to assign settings to your pen or touch, choose the corresponding icon from **Tools**.
 - For some products, the Tool List will not be present.
4. Select the tab of the component you want to change.

5. From the drop-down menu next to the component that you want to customize, select the [setting](#) that you want to assign to it.
 - Any changes you make take effect immediately.
6. Engage the component that you customized, and the setting that you assigned is performed.

Tip: You can assign settings that [apply only in a specific application](#).

Example of assigning a setting in Wacom Tablet Properties

Here is how you can customize a pen button to **Zoom In**.

- Open Wacom Tablet Properties.
- Select your pen from the **Tool** list.
- Select the **Pen** tab.
 - An image of your pen is displayed on the tab.
 - Each pen button has a drop-down menu next to it that tells you the current setting assigned to it.
- From the drop-down next to one of the pen buttons, select **Zoom In**.
- Press that pen button, and your application zooms in.

What settings can I assign?

You can change the settings assigned to ExpressKeys™, Touch Rings, On-Screen Controls, pen buttons, and other customizable components of your device in [Wacom Tablet Properties](#). Then, when you engage that component, such as pressing an ExpressKey or pen button, the function that you assigned to it is performed.

Refer to this list of settings to help you decide if you want to change any settings that are already assigned.

Note: The available features and customizable components in this list may vary depending on your device. Refer to the drop-down menus on the **settings** tabs in [Wacom Tablet Properties](#) to see which options are available for the components specific to your device.



Warning: Make sure that the **Click** setting is assigned to at least one customizable component so you can always navigate and click.

**4th click or
5th click** Performs a 4th or 5th mouse button click.

**[Application
Defined](#)** The application you are working in assigned a setting for this component.

**Auto
Scroll/Zoom** Assign this setting to the Touch Ring to zoom in most graphics applications or scroll in most other applications.

	Refer to the documentation for the application you are working in to see which setting has been assigned.
Back	Returns you to the previous step, similar to how Back works in browsers.
Click	Performs a mouse button click.
	Presses and holds the mouse button.
Click Lock	<ul style="list-style-type: none"> Begin the click lock by engaging a component, and then engage it again to release it. For example, if Click Lock is assigned to a pen button, press the pen button once to begin Click Lock and press it again to release the lock. <p>Tip: Click Lock is helpful when you are dragging objects and selecting blocks of text.</p>
Default	Resets the component to its default setting.
Disabled	Disables the component so that when you engage the component, such as pressing the pen button, nothing happens.
Display Toggle	Toggles between your devices and monitors, if you are using your device with multiple monitors or devices.
	Performs a double-click.
Double Click	<p>Tip: For easier double-clicking, assign this setting to a component, such as a pen button, instead of tapping twice with the pen tip.</p> <p>Sets your strokes with the pen to erase instead of draw.</p>
Erase	For example, if you assign Erase to your pen button, you can move your pen over an area you want to erase while pressing the pen button.
Forward	Directs you to a step ahead of where you are in your history, similar to how Forward works in browsers.
	Toggles Ink on and off.
Ink Toggle (Mac)	<ul style="list-style-type: none"> When Handwriting recognition is turned on, Ink recognizes and converts your handwriting into text and inserts it into a document.
	Performs the keystroke or combination of keystrokes that you assign.
Keystroke	When you select Keystroke , the Define Keystroke window appears so you can select a keystroke or create a keystroke combination .
Launchpad	Displays the Launchpad menu, where you can start applications.
Middle Click	Performs a middle mouse button click.

Assign this setting to a pen button to toggle between **Pen** mode and **Mouse** mode.

Mode Toggle

- When you first set a pen button to Mode Toggle, the **Mouse Mode** window appears. Move the sliders to adjust the mouse acceleration and speed.
- In **Pen** mode, you use the pen like a regular pen. The cursor jumps to the point where you place your pen, and you define which portion of your device maps to which portion of your monitors.
- In **Mouse** mode, you use the pen like a mouse. The cursor stays on the point you left it when you pick up your pen, and you interact with your device like you interact with a mousepad.

Performs a modifier (Shift, Alt, Ctrl, Option, Command) plus a mouse button click or mouse wheel scroll.

Modifier

- When you select **Modifier**, the **Define Modifier** window appears.
- Select the modifier and then select a mouse button click or mouse wheel scroll to assign that combination.

Displays the On-Screen Control that you select.

On-Screen Controls

- When you select **On-Screen Controls**, the list of Screen Key panels, Radial Menus, and Keypads from the On-Screen Controls tab appears.
- Select the On-Screen Control that you want to assign.

On-Screen Keyboard

Toggles the Windows On-Screen Keyboard open and closed.

Opens or runs the application, file, or a script you choose.

Open/Run

- When you select **Open/Run**, the **Run Application** window appears.
- Click **Browse** and select the item. Click **OK**.

Allows you to pan or scroll in a document or item by moving the pen tip up and down or right and left.

Pan/Scroll

When you select **Pan/Scroll**, the **Scroll Speed** window appears. Move the slider to your preferred scrolling speed.

Pans or zooms, depending on whether you are hovering or touching the device surface.

Pan/Zoom

- To pan, hover above (but do not touch) the device surface, and then press and hold the button while moving your pen.
- To zoom, press and hold the button while touching the device surface and move the pen towards the top to zoom out or towards the bottom to zoom in.
 - If you pick up your pen to hover, zooming stops. As long as you continue to hover and hold the button, you can still zoom when you touch the pen tip to the surface again.

- If you want to pan again after zooming, release the button and press it again.

Notes

- If the application does not support Pan/Zoom, the following happens instead:
 - Pressing the button while hovering activates a Ctrl + Right-Click.
 - Pressing the button while touching the surface activates a mouse wheel scroll.
- When you select **Pan/Zoom** to assign it to a button, the **Zoom Speed** window appears. Move the slider to your preferred zooming speed.
- Changing the [pen button mode](#) does not affect this setting.

Toggles between normal precision and a precision that you choose, from **Fine** to **Ultra Fine**.

Precision Mode	<ul style="list-style-type: none"> • In the Precision Mode window that appears, move the slider to set the precision that you toggle into. • For example, if you assign Precision Mode to a pen button, when you press the pen button, you switch to working in the precision that you selected from the slider. When you press the pen button again, you switch back to working in the normal precision.
-----------------------	--

Locks the pressure at the current level until you release the component.

Pressure Hold	For example, if you assign this setting to a pen button, you can paint with pressure sensitivity enabled in your application until you reach the brush size you like. Then, press and hold the pen button to lock in that brush size as long as you are pressing and holding the button.
----------------------	--

Right Click	Performs a right mouse button click.
--------------------	--------------------------------------

Scroll	Scrolls when you use the Touch Ring.
---------------	--------------------------------------

Scroll Down	Scrolls your active application down.
--------------------	---------------------------------------

Scroll Up	Scrolls your active application up.
------------------	-------------------------------------

Settings	Displays the current settings of your customizable components, including ExpressKeys™, the Touch Ring, pen, and touch.
-----------------	--

Click on any item that displays to open Wacom Tablet Properties so you can adjust setting assignments, if desired.

Show Desktop	Minimizes all open windows so you can view your desktop.
---------------------	--

Skip	Assign this setting to the Touch Ring center button so you can skip one of the settings that you assigned to the Touch Ring.
Switch Application	Toggles between the applications that you have open.
Tablet PC Settings	Displays the Tablet PC Settings menu.
Touch On/Off	<p>Toggles touch on and off.</p> <p>This setting is not available on devices that have a built-in touch on/off switch or button.</p> <p>Tumbles, orbits, or rotates items in 3D applications.</p>
Tumble	<p>If the application does not support Tumble, pressing the button activates a middle-click instead.</p> <p>Zooms the active application on your computer.</p> <p>Assigned to a Touch Ring: Slide your finger around the ring clockwise to zoom in and counterclockwise to zoom out.</p> <p>Assigned to a pen button or ExpressKey: Press and hold the button while touching the pen tip to the device surface and move towards the top to zoom out or towards the bottom to zoom in. If you pick up your pen to hover, zooming stops. As long as you continue to hover and hold the button, you can still zoom when you touch the pen tip to the surface again.</p>
Zoom	<p>Notes</p> <ul style="list-style-type: none"> • If the application does not support Zoom, pressing the button activates a mouse wheel scroll instead. • When you select Zoom to assign it, the Zoom Speed window appears. Move the slider to your preferred zooming speed. • Changing the pen button mode does not affect this setting.
Zoom In	Zooms your active application in.
Zoom Out	Zooms your active application out.

What settings can I assign?

You can change the settings assigned to ExpressKeys™, Touch Rings, On-Screen Controls, pen buttons, and other customizable components of your device in [Wacom Tablet Properties](#). Then,

when you engage that component, such as pressing an ExpressKey or pen button, the function that you assigned to it is performed.

Refer to this list of settings to help you decide if you want to change any settings that are already assigned.

Note: The available features and customizable components in this list may vary depending on your device. Refer to the drop-down menus on the **settings** tabs in [Wacom Tablet Properties](#) to see which options are available for the components specific to your device.



Warning: Make sure that the **Click** setting is assigned to at least one customizable component so you can always navigate and click.

**4th click or
5th click**

Performs a 4th or 5th mouse button click.

[Application
Defined](#)

The application you are working in assigned a setting for this component.

**Auto
Scroll/Zoom**

Assign this setting to the Touch Ring to zoom in most graphics applications or scroll in most other applications.

Refer to the documentation for the application you are working in to see which setting has been assigned.

Back

Returns you to the previous step, similar to how Back works in browsers.

Click

Performs a mouse button click.

Presses and holds the mouse button.

Click Lock

- Begin the click lock by engaging a component, and then engage it again to release it. For example, if **Click Lock** is assigned to a pen button, press the pen button once to begin Click Lock and press it again to release the lock.

Tip: Click Lock is helpful when you are dragging objects and selecting blocks of text.

Default

Resets the component to its default setting.

Disabled

Disables the component so that when you engage the component, such as pressing the pen button, nothing happens.

**Display
Toggle**

Toggles between your devices and monitors, if you are using your device with multiple monitors or devices.

Double Click

Performs a double-click.

Tip: For easier double-clicking, assign this setting to a component, such as a pen button, instead of tapping twice with the pen tip.

Sets your strokes with the pen to erase instead of draw.

Erase

For example, if you assign **Erase** to your pen button, you can move your pen over an area you want to erase while pressing the pen button.

Forward

Directs you to a step ahead of where you are in your history, similar to how Forward works in browsers.

Toggles Ink on and off.

**Ink Toggle
(Mac)**

- When Handwriting recognition is turned on, Ink recognizes and converts your handwriting into text and inserts it into a document.

Performs the keystroke or combination of keystrokes that you assign.

Keystroke

When you select **Keystroke**, the **Define Keystroke** window appears so you can [select a keystroke or create a keystroke combination](#).

Launchpad

Displays the Launchpad menu, where you can start applications.

Middle Click

Performs a middle mouse button click.

Assign this setting to a pen button to toggle between **Pen** mode and **Mouse** mode.

Mode Toggle

- When you first set a pen button to Mode Toggle, the **Mouse Mode** window appears. Move the sliders to adjust the mouse acceleration and speed.
- In **Pen** mode, you use the pen like a regular pen. The cursor jumps to the point where you place your pen, and you define which portion of your device maps to which portion of your monitors.
- In **Mouse** mode, you use the pen like a mouse. The cursor stays on the point you left it when you pick up your pen, and you interact with your device like you interact with a mousepad.

Performs a modifier (Shift, Alt, Ctrl, Option, Command) plus a mouse button click or mouse wheel scroll.

Modifier

- When you select **Modifier**, the **Define Modifier** window appears.
- Select the modifier and then select a mouse button click or mouse wheel scroll to assign that combination.

Displays the On-Screen Control that you select.

**On-Screen
Controls**

- When you select **On-Screen Controls**, the list of Screen Key panels, Radial Menus, and Keypads from the On-Screen Controls tab appears.

- Select the On-Screen Control that you want to assign.

On-Screen Keyboard

Toggles the Windows On-Screen Keyboard open and closed.

Opens or runs the application, file, or a script you choose.

Open/Run

- When you select **Open/Run**, the **Run Application** window appears.
- Click **Browse** and select the item. Click **OK**.

Allows you to pan or scroll in a document or item by moving the pen tip up and down or right and left.

Pan/Scroll

When you select **Pan/Scroll**, the **Scroll Speed** window appears. Move the slider to your preferred scrolling speed.

Pans or zooms, depending on whether you are hovering or touching the device surface.

- To pan, hover above (but do not touch) the device surface, and then press and hold the button while moving your pen.
- To zoom, press and hold the button while touching the device surface and move the pen towards the top to zoom out or towards the bottom to zoom in.
 - If you pick up your pen to hover, zooming stops. As long as you continue to hover and hold the button, you can still zoom when you touch the pen tip to the surface again.
- If you want to pan again after zooming, release the button and press it again.

Pan/Zoom

Notes

- If the application does not support Pan/Zoom, the following happens instead:
 - Pressing the button while hovering activates a Ctrl + Right-Click.
 - Pressing the button while touching the surface activates a mouse wheel scroll.
- When you select **Pan/Zoom** to assign it to a button, the **Zoom Speed** window appears. Move the slider to your preferred zooming speed.
- Changing the [pen button mode](#) does not affect this setting.

Toggles between normal precision and a precision that you choose, from **Fine** to **Ultra Fine**.

Precision Mode

- In the **Precision Mode** window that appears, move the slider to set the precision that you toggle into.
- For example, if you assign Precision Mode to a pen button, when you press the pen button, you switch to working in the precision that you selected from the slider. When you press the pen button again, you switch back to working in the normal precision.

Locks the pressure at the current level until you release the component.

Pressure Hold	For example, if you assign this setting to a pen button, you can paint with pressure sensitivity enabled in your application until you reach the brush size you like. Then, press and hold the pen button to lock in that brush size as long as you are pressing and holding the button.
Right Click	Performs a right mouse button click.
Scroll	Scrolls when you use the Touch Ring.
Scroll Down	Scrolls your active application down.
Scroll Up	Scrolls your active application up.
Settings	<p>Displays the current settings of your customizable components, including ExpressKeys™, the Touch Ring, pen, and touch.</p> <p>Click on any item that displays to open Wacom Tablet Properties so you can adjust setting assignments, if desired.</p>
Show Desktop	Minimizes all open windows so you can view your desktop.
Skip	Assign this setting to the Touch Ring center button so you can skip one of the settings that you assigned to the Touch Ring.
Switch Application	Toggles between the applications that you have open.
Tablet PC Settings	Displays the Tablet PC Settings menu.
Touch On/Off	<p>Toggles touch on and off.</p> <p>This setting is not available on devices that have a built-in touch on/off switch or button.</p> <p>Tumbles, orbits, or rotates items in 3D applications.</p>
Tumble	<p>If the application does not support Tumble, pressing the button activates a middle-click instead.</p> <p>Zooms the active application on your computer.</p>
Zoom	<p>Assigned to a Touch Ring: Slide your finger around the ring clockwise to zoom in and counterclockwise to zoom out.</p> <p>Assigned to a pen button or ExpressKey: Press and hold the button while touching the pen tip to the device surface and move towards the top to zoom out</p>

or towards the bottom to zoom in. If you pick up your pen to hover, zooming stops. As long as you continue to hover and hold the button, you can still zoom when you touch the pen tip to the surface again.

Notes

- If the application does not support Zoom, pressing the button activates a mouse wheel scroll instead.
- When you select **Zoom** to assign it, the **Zoom Speed** window appears. Move the slider to your preferred zooming speed.
- Changing the [pen button mode](#) does not affect this setting.

Zoom In Zooms your active application in.

Zoom Out Zooms your active application out.

Customize user options

Click on **Options** in [Wacom Tablet Properties](#) to customize pen button mode and other preferences for your device.

Note: The available options may vary depending on your device.

- **Hover Click** is the default and allows you to click by pressing the pen button while holding the pen tip slightly above the device surface.
- Select **Click & Tap** if you want to click by pressing the pen button and tapping the pen tip to the device surface.
 - Choose this option for more precise placement of clicks.
- Move the **Brightness Adjustment** slider to adjust the brightness level or to turn off status LEDs and active area markers.
- For devices that support wireless, select **Show wireless tablet battery** if you want to display the battery status icon in your system tray during wireless operation.
- To disable all ExpressKeys™, Touch Rings, Rocker Rings, and Touch Strips, click the **Disable All Tablet Buttons** button.

Options

Note: These settings apply to all tablets, mice, pens and applications

Pen Button Mode

☒ Hover Click
Hold the pen tip close to the tablet and press the pen button to do a right-click or other click function.

☐ Click & Tap
Press the pen button and tap the pen tip to the tablet to do a right-click or other click function.

Tablet Light Brightness
Sets tablet display brightness.

Off Dim Brightest

Pressure Compatibility

☐ Adjusts the pen pressure for compatibility with older applications that only support 1024 pressure levels.

Disable All Tablet Buttons
Sets all ExpressKeys, Touch Rings, Rocker Rings, and Touch Strips to Disabled for devices currently connected. Disable All

☒ Show wireless tablet battery status in system tray

Default Cancel OK

The above screenshot is for descriptive purposes; it may not match your screen.

Wacom Support

If you encounter an issue with your pen tablet or pen display, perform the recommended action in any error message that appears on your screen. If that does not resolve the issue, try the following:

- Review the Quick Start Guide and make sure that the tablet is set up correctly, including that all plugs and connectors are firmly in place.
- Check the User Help for information regarding the issue.
- Visit the [Wacom website](https://www.wacom.com/support) to view the product FAQs (Frequently Asked Questions) to see if any apply to your issue.

- Go to [Wacom Support](#) to see if a new driver is available and install it.
- Test your device and tools.

If you tried these suggestions and still have an issue, contact [Wacom Support](#). Please be near your computer with the following information available:

- The make and model of your computer and the version of your operating system.
- Which devices were connected to your computer when the issue occurred.
- The name and version of the software application that you were using when the issue occurred.
- What happened and what you were doing when the issue occurred.
- The exact wording of any error messages that appeared on your screen.
- How you tried to solve the problem.

Test the tablet

Turn on your computer. The tablet status LED should light. There may be a short delay before the device is ready to use.

If the LED does not light, try these tests to potentially fix the issue yourself.

1. Restart your computer.
2. Inspect the cables for damage.
3. Open your computer's device manager or system information menu and verify that the USB port that the device is plugged into is working properly.
4. Make sure the cables are securely connected to your device and to your computer.
5. If you are using a USB hub, make sure the hub is securely connected to your computer. If it is and your device still does not work, disconnect the device and plug it into a USB port that is on your computer instead.
6. If you are using a USB port on your computer, try connecting the device to a different USB port on your computer. If that does not work, try connecting the device to a USB port on another computer.
7. If you are using any other tools, such as the mouse, check to make sure that they function.

If these tests fail, you may have defective hardware. Contact [Wacom Support](#) for help.

Test the pen

If your pen does not work properly, try these fixes first.

Note: The available features on your pen may vary depending on your device.

1. Go to the **Pen** tab in [Wacom Tablet Properties](#) and check that the settings assigned to the pen tip and pen buttons are what you expect.
2. If the assigned settings are as expected, restart your computer.
3. If restarting does not fix the issue, update your driver software.
4. If updating your driver does not fix the issue, **Reset settings** in the [Wacom Desktop Center](#).

5. If resetting does not fix the issue, diagnose issues using Wacom Tablet Properties.

Diagnose issues using Wacom Tablet Properties

- [Open Wacom Tablet Properties.](#)
- If you have more than one device connected to your system, select the device you are using the pen with from the **Device** list.
- Click **About**, and then click **Diagnose**.

Diagnostics

Driver Info:
Version: 6.3.29b1

Device Info:
Device: Intuos pro L
Model: PTH-851
Version:
Left Buttons: All Switches Open
Right Buttons:
Left Touch: 0
Right Touch:
OEM Code: 0
Battery Status:
EDR Supported:
Wireless Mode:
Wireless ID: WL#C09EFB
Tablet S/N:

Touch Info:
Version:
Status: 0
Finger 1:
Finger 2:
Data Rate:

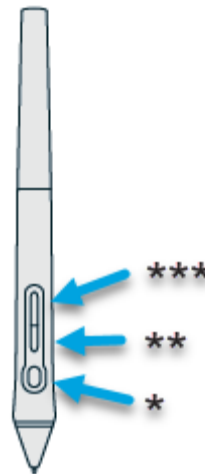
Pointing Device Info:
Proximity:
Device Name:
Device Type:
Device S/N:
X Data:
Y Data:
Switches: All Switches Open
Pressure: 0%
X Tilt:
Y Tilt:
Wheel:
Rotation:

Close

The above screenshot is for descriptive purposes; it may not match your screen.

- Hold your pen within 10 mm (0.4 inch) of the surface of the device while watching the **Pointing Device Info**.
 - You should see a value appear after **Proximity**, **Device Name**, **Device Type**, and **Device S/N** (serial number).
- Move the pen along the surface of the device.
 - As you move the pen, the **X Data** and **Y Data** values should change.
- Press on the surface with the pen tip and then with the eraser.
 - As you are pressing, the **Switches** and **Pressure** values should change from approximately 0% to approximately 100% when you are pressing with full pressure.
- Press the tip, eraser, and each pen button, one at a time. When you are pressing each pen button, hold the pen tip slightly above the device surface.
 - As you press each item, the **Switches** number should change to match these numbers:

- Pen tip = 1
- Pen button (***) = 3
- Pen button (**) = 2
- Pen button (*) = 2, 3
- Pen eraser = 1
- Airbrush tip = 1
- Airbrush pen button = 2
- Airbrush eraser = 1



- Move the pen from a vertical position toward the right and then toward the left.
 - The **X Tilt** value should change to approximately +60 when you move to the right.
 - The **X Tilt** value should change to approximately -60 when you move to the left.
- Move the pen from a vertical position toward the bottom of the device and then toward the top of the device.
 - The **Y Tilt** value should change to approximately +60 when you move toward the bottom.
 - The **Y Tilt** value should change to approximately -60 when you move toward the top.
- If you are testing an Art Pen, place the pen tip on the surface of the device and slowly rotate the pen on its axis.
 - The **Rotation** value should change as you rotate the pen.
- If you are testing an Airbrush, move the fingerwheel forward and backward.
 - The **Wheel** value should decrease to approximately 0 when the fingerwheel is all the way forward.
 - The **Wheel** value should increase to approximately 1000 when the fingerwheel is all the way backward.

Glossary

Application-specific settings. Pen tablet tool and tablet settings that have been customized for individual applications. Application-specific settings are in effect whenever you use the application.

Aspect. The ratio between the vertical and horizontal dimension of the tablet or display.

Bluetooth. A method of wireless communication between devices.

Click force. The amount of force you must apply to the pen tip for a click to occur.

Digital Ink. Typically, handwritten content which has been created using a pen on a computer in the form of sketches, ink mark-up, or handwriting. The handwriting can be converted to typewritten text or used in its original format.

Display Toggle. A feature that allows you to work with your tablet on all displays or on one display at a time. Available only on multiple monitor systems.

Double-click assist. A feature that makes it easier to double-click by setting the size of the double-click distance.

Double-click distance. The maximum distance (in screen pixels) that the screen cursor can move between clicks and still be accepted as a double-click. Increasing the double-click distance makes double-clicking easier, but may cause a delay in brush strokes in some graphics applications.

Double-click speed. The maximum time that can pass between clicks and still be accepted as a double-click.

Eraser-aware application. A software application that has built-in support for the pen eraser. These applications take advantage of the eraser in different ways, depending on what makes sense for the application.

Expand. A motion used when navigating with touch. Touch the tablet surface with two fingers spaced closely together, then move your fingers apart.

ExpressKeys™. The customizable component buttons located on your pen tablet.

Fingerwheel. The control wheel on the optional Airbrush.

Modifier. Modifier keys include Shift, Alt, and Ctrl for Windows, or Shift, Control, Command, and Option for Mac. You can customize your tool buttons or ExpressKeys™ to simulate a modifier key.

Nib. The replaceable pen tip.

Pairing. A method of creating a virtual cable (Bluetooth) link between two devices.

Pan. A motion used when navigating with touch. Touch the tablet surface with your fingers and move them in the same direction.

Pen input. A method of controlling a computer using the pen.

Pinch. A motion used when navigating with touch. Touch the tablet with two fingers spaced slightly apart, then move or 'pinch' your fingers together on the tablet surface.

Pixel. The smallest unit of measure on your display screen.

Pressure sensitive. A quality of the Wacom pen tip and eraser that senses the amount of pressure being applied. This is used to create natural-looking pen, brush, and eraser strokes in applications that are pressure-sensitive.

Pressure-sensitive application. Any application that supports pressure-sensitive input.

Proximity. The height above the tablet active area where pen detection occurs.

Rotate. A motion used when navigating with touch. Touch the tablet with two fingers spaced slightly apart and rotate them in a circular fashion, move them in opposing directions, or hold one finger stationary and track your other finger around the stationary finger.

Swipe. A motion used when navigating with touch. Touch the tablet surface with three, four, or five fingers and sweep them quickly across the tablet in the same direction.

Tap. A motion used when navigating with touch. Touch and lift a single finger (or multiple fingers, depending on the gesture) from the tablet.

Tilt-sensitive. A quality of the pen tip and eraser that senses the amount of tilt between the tool and the tablet. This is used to create natural-looking pen, brush, and eraser strokes in applications that are tilt-sensitive.

Touch. A method of interacting with a computer using only your fingers on the tablet. May also be referred to as touch input.

Touch Ring. The customizable control ring located on your pen tablet.

Touch Strips. The customizable control strips located on the back of the Cintiq 22.

Touch sensor. The navigation area of your pen tablet where touch is detected. The touch sensor resides within the active area, and does not accept pen input.

Track. A motion used when navigating with touch. Touch and move a single finger across the tablet surface.

Wacom Link adaptor Adapter for creative pen displays on machines without a USB-C port.