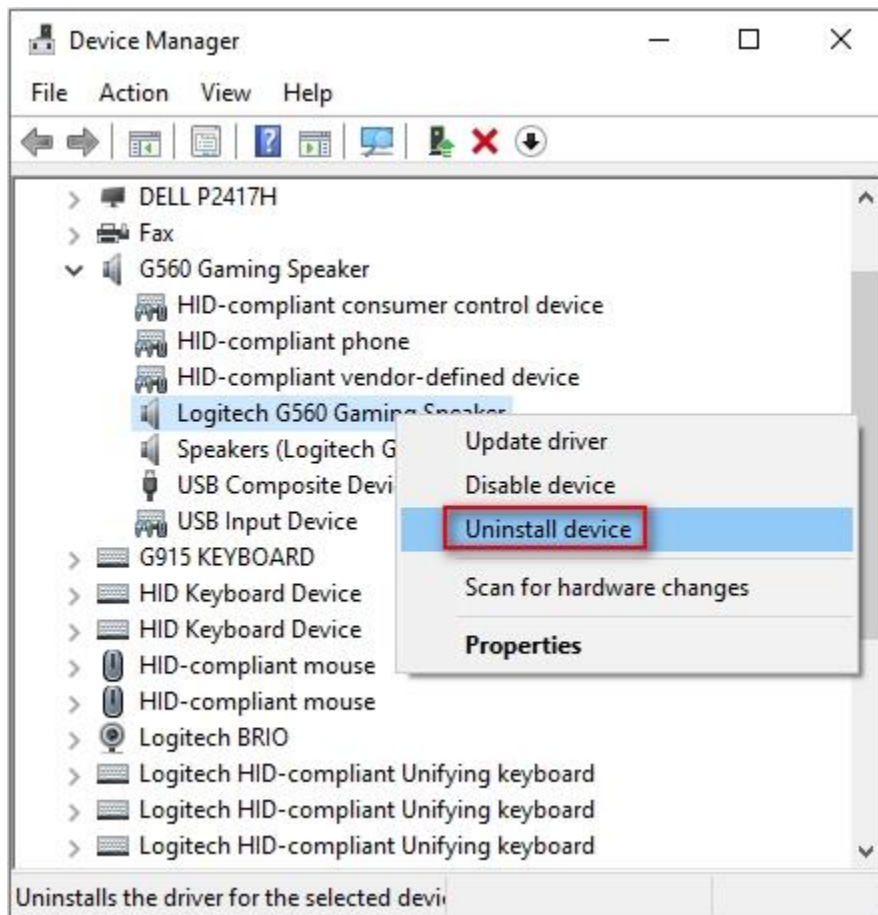


Frequently Asked Questions

- **+Device does not appear in G HUB**

If some features of G HUB do not appear to work correctly and restarting doesn't help, try this:

1. Go to Device Manager (WIN+PAUSE|BREAK).
2. Click on **View** at the top and view **Devices by container**.
3. Look for your device and expand it. You are looking for the name of the device, for example, Logitech Pro X Gaming Headset, or Logitech G560 Gaming Speaker.
4. Right-click and select **Uninstall Device**.



5. Check **Delete the driver software for this device** and then click **Uninstall**.



6. Unplug the device and plug it back into a different USB port. It should re-enumerate and be detected in G HUB.
7. G HUB should then download the driver for your device.

If issues persist:

Run G HUB with the default settings:

1. Exit G HUB by right-clicking the applet in the task tray and selecting **Quit**.
2. Navigate to C:\Users\[USERNAME]\AppData\Local\LGHUB, where [USERNAME] will be specific to your account.
3. Find settings.json and make a copy and back this up somewhere on your computer. The Desktop is a good place so you can find it easily.
4. Navigate to C:\Users\[USERNAME]\AppData\Local\LGHUB, where [USERNAME] will be specific to your account.
5. Delete the settings.json file in the LGHUB folder.
6. Run G HUB. You will notice that all the settings have been set back to default and the settings.json file has been rebuilt.

Restoring your old settings

If you want to restore your old settings:

1. Quit G HUB.
2. Copy and paste the backup of settings.json that you saved earlier into the C:\Users\[USERNAME]\AppData\Local\LGHUB folder.
3. Run G HUB — your old settings should be restored.

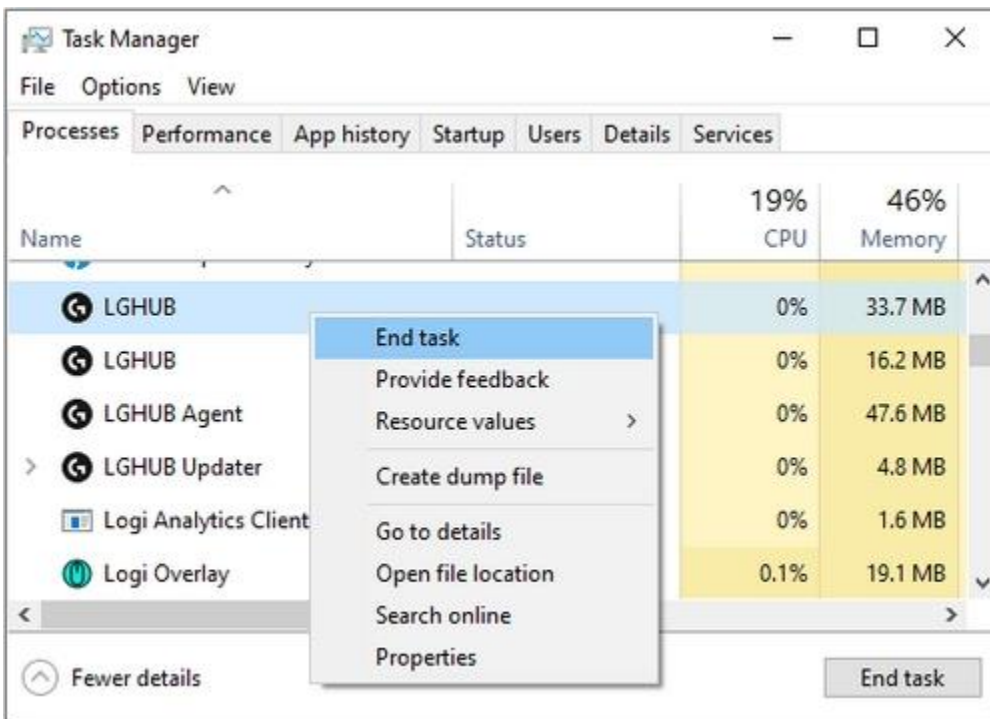
• +G HUB freezes while loading and logo animation loops

If G HUB seems to be stuck while trying to load and the logo animation loops, try the following:

1. Exit G HUB by right-clicking the applet in the task tray and selecting **Quit**.



2. Navigate to Task Manager (CTRL+ALT+DEL).
 NOTE: You may also need to click **More Details** at the bottom of the window
 Look for LGHUB, LGHUB Agent and LGHUB Updater, right-click and choose **End task** on each.



3. Once those processes are ended, navigate to C:\Program Files\LGHUB and run these in order:
 - Lghub_updater.exe
 - Lghub_agent.exe
 - Lghub.exe

This should resolve the logo spinning issue. If it doesn't, then make sure you're running with admin privileges. G HUB might need to update and needs admin privileges to do this.

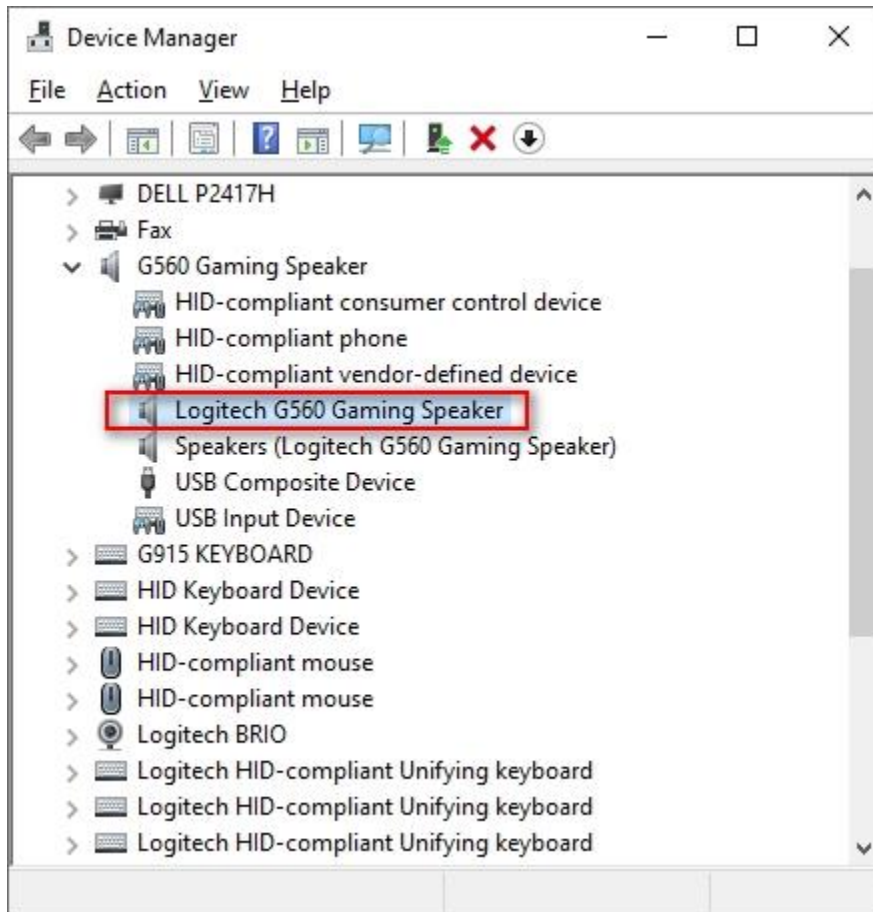
If you're using an administrator account and the issue persists, please follow the steps in [G HUB Install/Uninstall/Update Troubleshooting](#).

- +Audio device not recognized

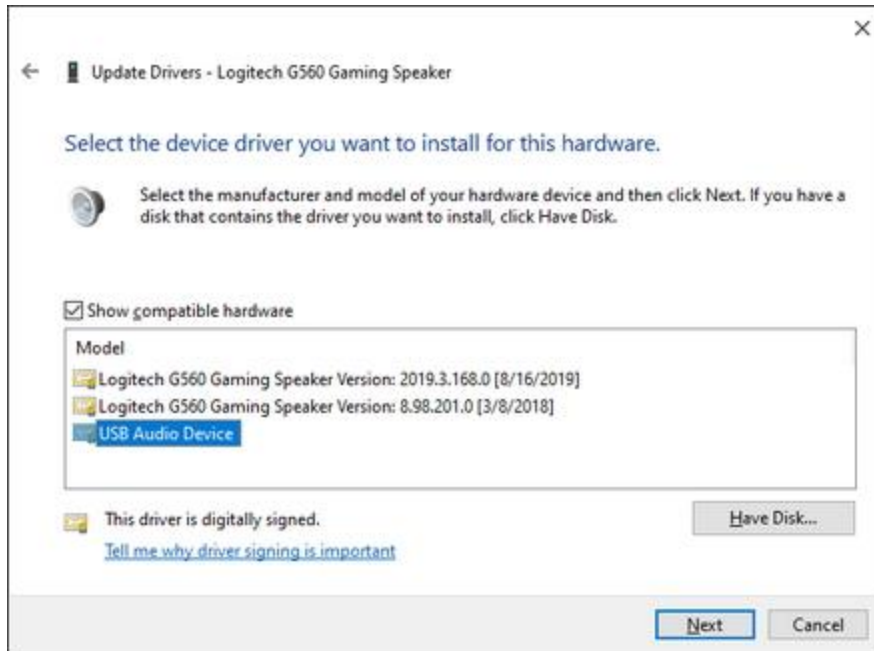
If you have problems with a headset or speaker, the following:

Revert back to Microsoft drivers:

1. Go to Device Manager (WIN+PAUSE|BREAK).
2. Click on the **View** tab at the top and select **Devices by container**.
3. Look for your headset/speaker and expand it. You are looking for the named device, for example, Logitech G560 Gaming Speaker or Logitech Pro X Gaming Headset.



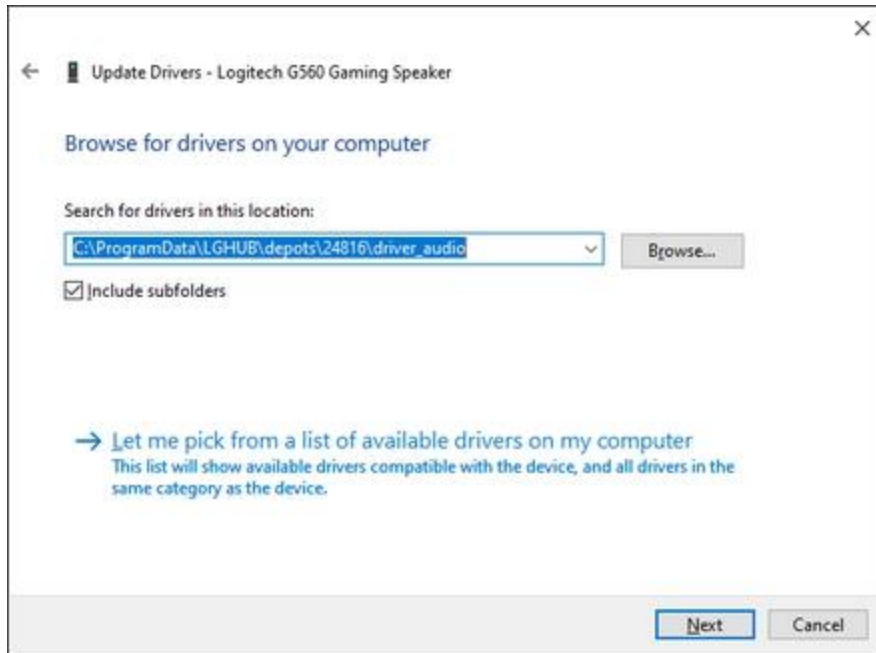
4. Right-click and click **Properties** and then select the **Driver** tab.
The **Driver Provider** should be Logitech — if it's Microsoft you don't need to change the driver.
5. If the driver is Logitech, click **Update Driver** and then **Browse my computer for driver software** > **Let me pick from a list...** > and choose **USB Audio Device**.



6. Click **Next**. This should update back to Microsoft's standard drivers.

Update to latest Logitech Audio Driver:

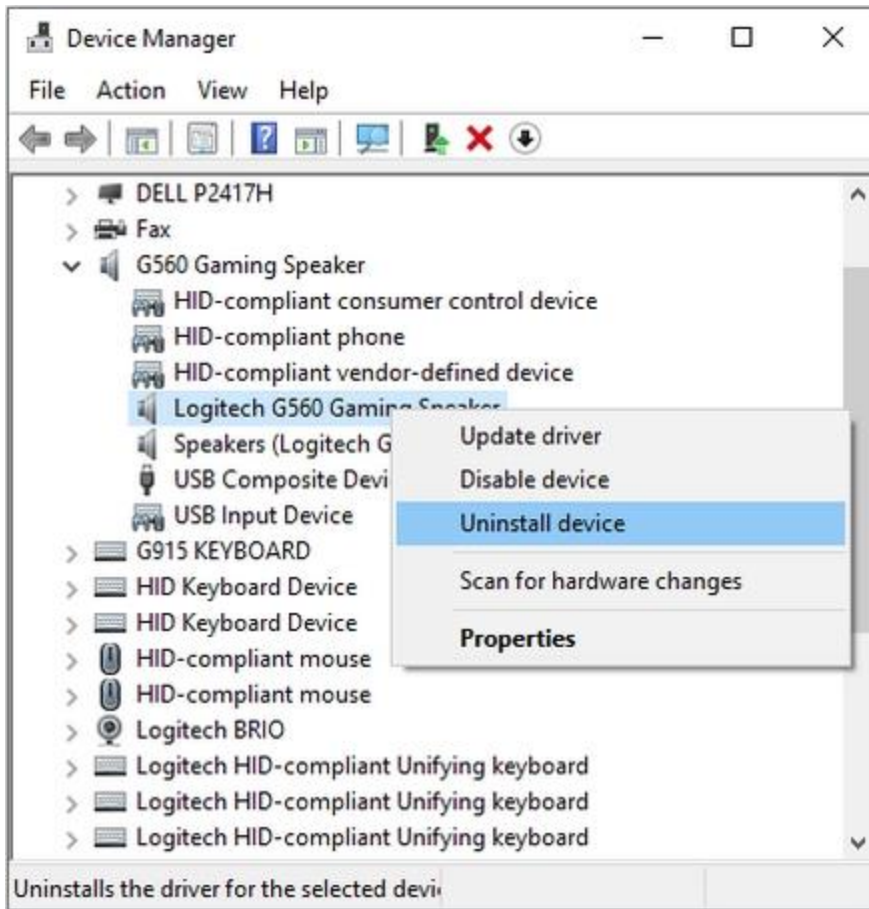
1. On the same device in Device Manager, right-click on **Properties** and then click the **Driver** tab.
2. Click **Update Driver** > **Browse my computer for driver software**.
3. Click the **Browse** button to the right of Search for drivers in this location:
Navigate to: C:\ProgramData\LGHUB\depots\2xxxx\driver_audio\ (note that although the five-digit number might be different, you are looking for a folder containing the driver audio folder).



4. Click **Next** to update to the latest audio driver.

If issues persist:

1. Go to Device Manager (WIN+PAUSE|BREAK).
2. Click on **View** at the top and select **View devices by container**.
3. Look for your device in the list and expand it. You are looking for the named device, for example, Logitech Pro X Gaming Headset, or Logitech G560 Gaming Speaker.
4. Right-click and select **Uninstall device**.



5. Check **Delete the driver software for this device** and then click **Uninstall**.



6. Unplug the device and plug it back into a different USB port. It should re-enumerate and be detected in G HUB.
7. G HUB should then download the driver for your device.

- **+Collect Windows log files**

Windows log files can be used to troubleshoot and diagnose issues you may encounter while playing games and watching videos. You may be asked by technical support to provide various log files so they can further help you to solve the problem. Here's how to obtain some of the most commonly used files:

- [DirectX Diagnostic files](#)
- [System Information files](#)
- [Windows System and Application Event log files](#)
- [Installation log files](#)

DirectX Diagnostic files

DirectX is a programming interface that handles Windows tasks related to multimedia, especially game programming and video. The DirectX Diagnostic file contains information about this interface and its current status. Here's how to generate a DirectX Diagnostic file:

1. Hold down the Windows key and press R.
2. In the Run dialog box, type DXDIAG and then click **OK**. This opens the DirectX diagnostic tool.
3. On the bottom of the DirectX Diagnostic Tool window, click **Save All Information**.
4. When prompted, save the file to your Desktop with the file name DXDIAG.
5. Click **Save**.
6. Attach the file when you reply to Support.

System Information files

The Microsoft System Information tool collects system information, such as devices installed on your computer and any associated device drivers. To generate a System Information file:

1. Hold down the Windows key and press R.
2. In the Run dialog box, type MSINFO32 and then click **OK**. This opens the System Information diagnostic panel.
3. In the menu bar on the left, click **File**, and then click **Save**. This will prompt you to choose a location to save the file.
4. When prompted, choose your Desktop as the location to save the file with the file name MSINFO32.
5. Click **Save**.
6. Attach the file when you reply to Support.

Microsoft Windows System and Application Event log files

The Microsoft Windows Event log is a centralized log service, where the operating system and applications can report events that have taken place, such as when an action successfully completed or if there was a failure. The logs can indicate where and why an issue may be occurring.

Use the steps below to generate System and Application Event log files for your specific version of Windows:

- [Windows XP](#)
- [Windows Vista](#)
- [Windows 7, Windows 8, and Windows 10](#)

Windows XP

1. Hold down the Windows key and press R.
2. In the Run dialog box, type EVENTVWR.MSC and click **OK**. This will open the Event Viewer.
3. In the left pane, under Event Viewer (Local), right-click on **Application** and select **Save Log File As...** from the menu.
4. When prompted, type Application Event Log for the file name and save the file to your Desktop.
5. Next, right-click on **System** and select **Save Log File As...** from the menu.
6. When prompted, type System Event Log for the file name and save the file to your Desktop.
7. Attach the file when you reply to Support.

Windows Vista

1. Hold down the Windows key and press R.
2. In the Run dialog box, type EVENTVWR.MSC and click **OK**. This will open the Event Viewer.
3. In the left pane, under Event Viewer (Local), expand the Windows Logs folder by double-clicking on it or clicking the arrow next to the folder.
4. Under Windows Logs, right-click on **Application** and select **Save Events As...** from the menu.
5. When prompted, type Application Event Log for the file name and save the file to your Desktop.
6. Under Windows Logs, right-click on **System** and select **Save All Events As...** from the menu.
7. When prompted, type System Event Log for the file name and save the file to your Desktop.
8. Attach the file when you reply to Support.

Windows 7, Windows 8, and Windows 10

1. Hold down the Windows key and press R.
2. In the Run dialog box, type EVENTVWR.MSC and click **OK**. This will open the Event Viewer.

3. In the left pane, under Event Viewer (Local), expand the Windows Logs folder by double-clicking on it or clicking on the arrow next to the folder.
4. Under Windows Logs, right-click on **Application** and select **Save All Events As...** from the menu.
5. When prompted, type Application Event Log for the file name and then save the file to your Desktop.
6. Under Windows Logs, right-click on **System** and select **Save All Events As...** from the menu.
7. When prompted, type System Event Log for the file name and then save the file to your Desktop.
8. Attach the file when you reply to Support.

Installation log files

When Logitech software is installed, it uses several key log files in Windows to store installation information. These log files can indicate where a potential issue may lie. Support can use that information to help provide a resolution. To locate the installation log files:

1. Hold down the Windows key and press R.
2. In the Run dialog box, type %WINDIR%\INF and click **OK**. This will open Windows Explorer in the Windows\INF folder.
3. In the Windows\INF folder, scroll down until you find the following files:
 - o setupapi.dev.log
 - o setupapi.app.log

Copy the files to your Desktop.

4. Attach the files when you reply to Support.

• +Setting up gaming-keyboard profiles for single player and multiplayer .exe files

Some games have separate .exe files for single player and multiplayer modes. For these games, each .exe file needs its own profile.

NOTE: Before you proceed, make sure either the single player or multiplayer mode has an existing, working profile. If you need help getting a profile to work, see answer [360023245934](#).

To create a new profile for the other game mode:

1. Open the Logitech Gaming Software:

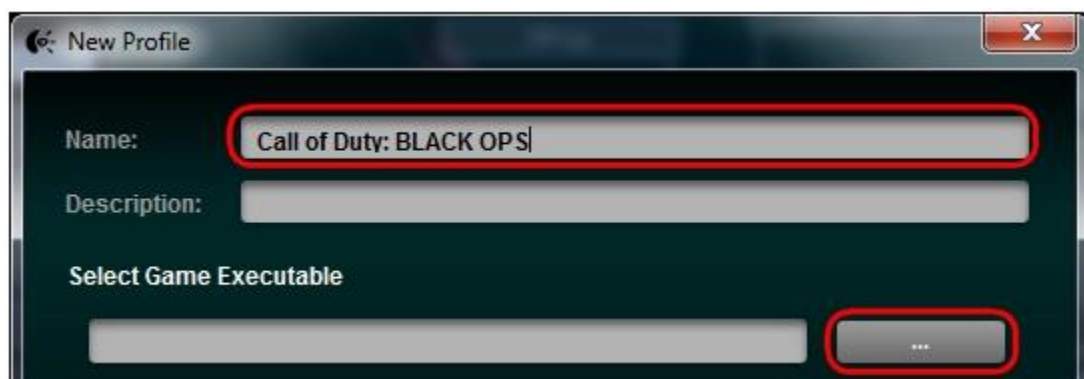
Start > All Programs > Logitech > Logitech Gaming Software 8.x
2. Click the glowing G-Keys.



3. Click the down arrow under the "+" and select "Create New Profile."

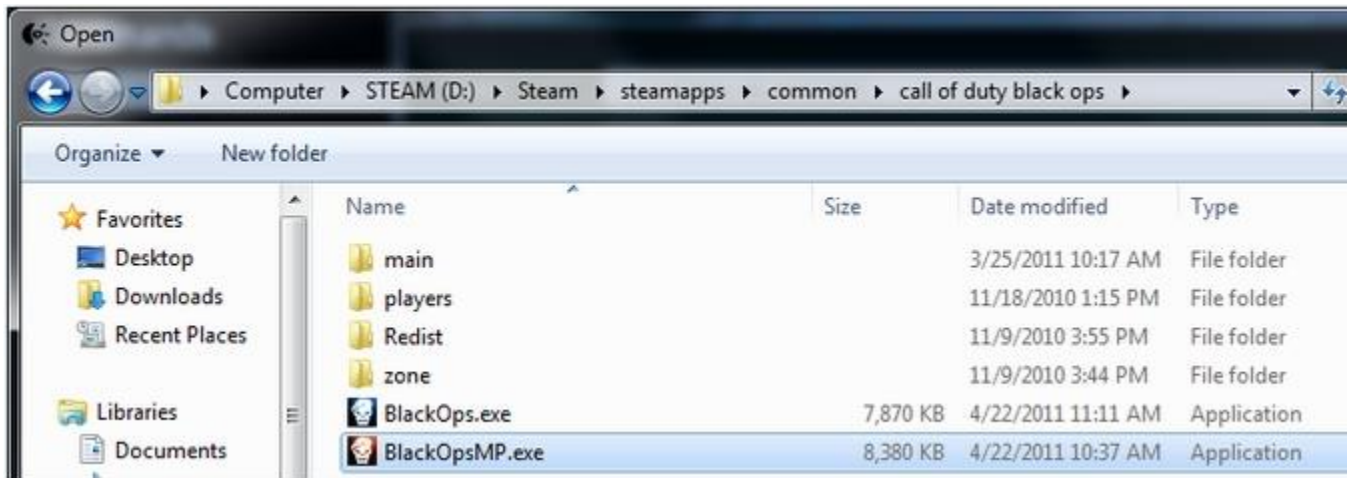


4. Enter a name that identifies the profile and then click the "..." button by the "Select Game Executable" option.

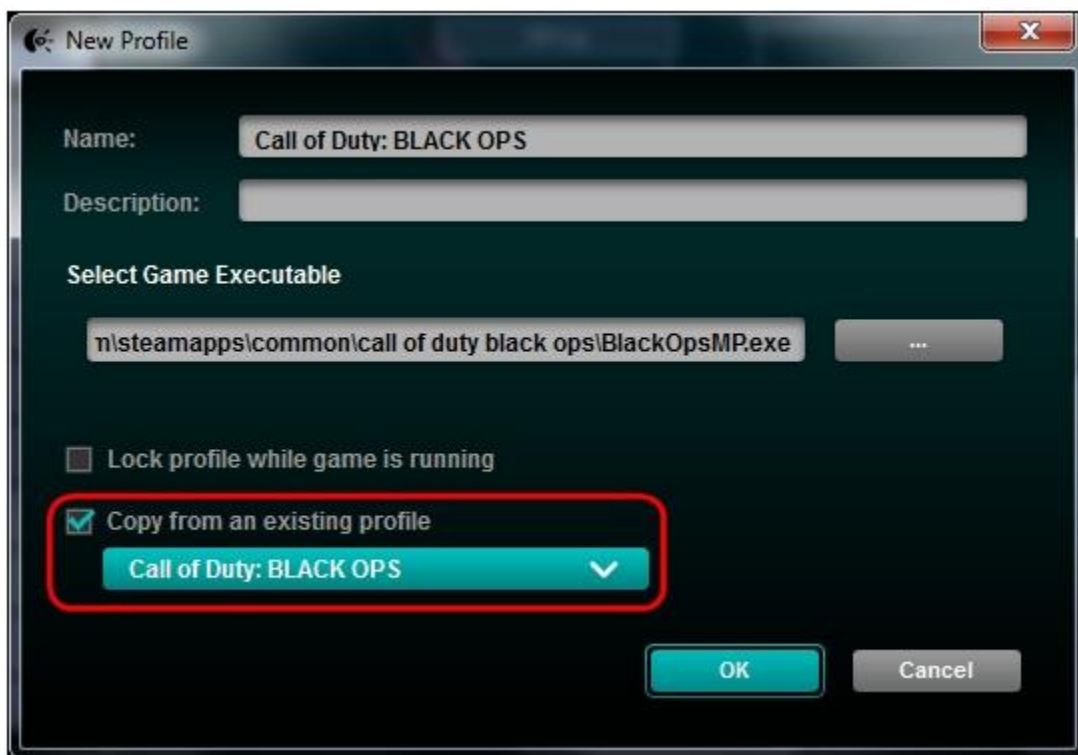


5. Browse to the directory of the game, select the game .exe and then click **Open**.

NOTE: The game's install location shown below may not be the same as your system. If you're unsure of the location of the correct .exe file, see answer [360023245934](#) for help.



6. Select the "Copy from an existing profile" check box and then choose the profile that works for the other game mode.



7. Click **OK** to finish setting up your new profile.

NOTE: Profiles may share the same name. In the image above, both BlackOps.exe and BlackOpsMP.exe have the profile name "Call of Duty: Black Ops". You can also use a

different name, like "Call of Duty: Black Ops (MP)" for the multiplayer BlackOpsMP.exe.

You should now have a new profile for the other game mode with all of your customizations carried over from the original.

- **+Gaming-keyboard profile stops working in the middle of a game**

When a profile stops working in the middle of a game, there are two possible causes. Either the profile is:

1. **Not associated with the correct .exe file**

The profile is detected in the game launcher or menu, but stops working while playing the game. This happens when the profile isn't associated with the correct .exe file. You can fix this by assigning the game's .exe file to the profile and not the launcher's .exe file. See answer [360023245494](#) for instructions.

OR

2. **Reverted to the Default Profile**

Another application running on your computer may come to the foreground, causing the active profile to revert to the Default Profile. You can fix this by locking the profile assigned to the game. See answer [360023245494](#) for instructions.

- **+Creating new gaming-keyboard profiles**

To create a new profile:

1. Open the Logitech Gaming Software:

Start > All Programs > Logitech > Logitech Gaming Software 8.x

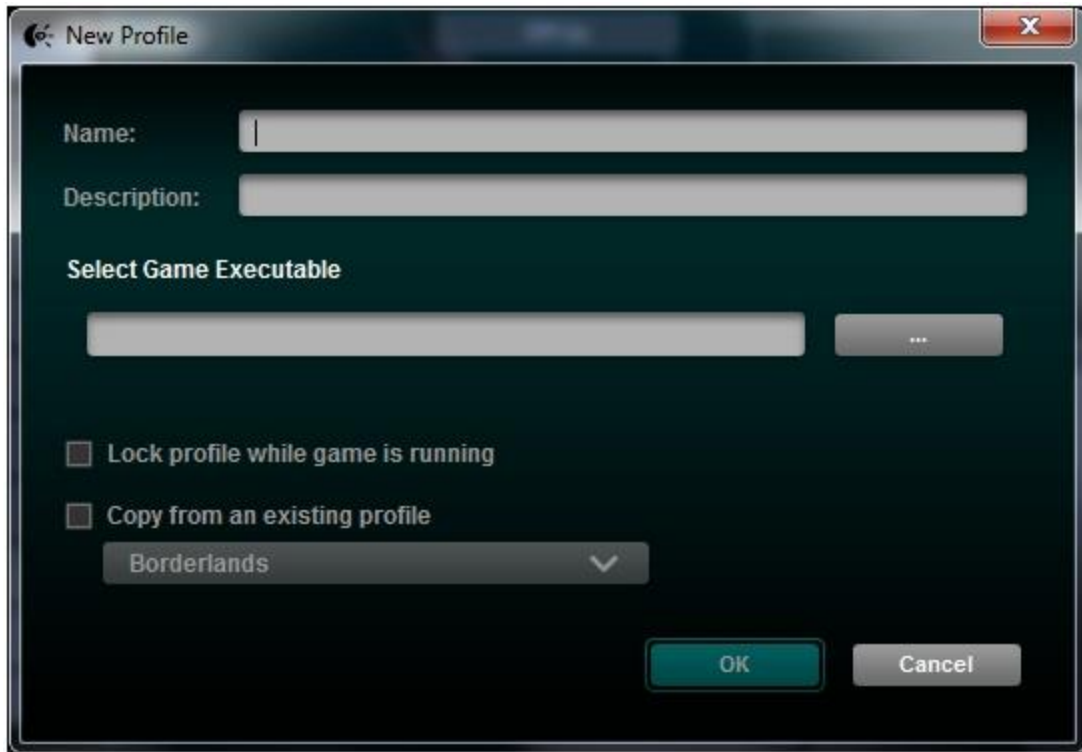
2. Click the glowing G-Keys.



3. Move the cursor over the "+" icon in **Profiles** and look for the down arrow to appear.
4. Click the down arrow under the "+" and click "Create New Profile."



This window will pop up showing what is required to set up a profile.

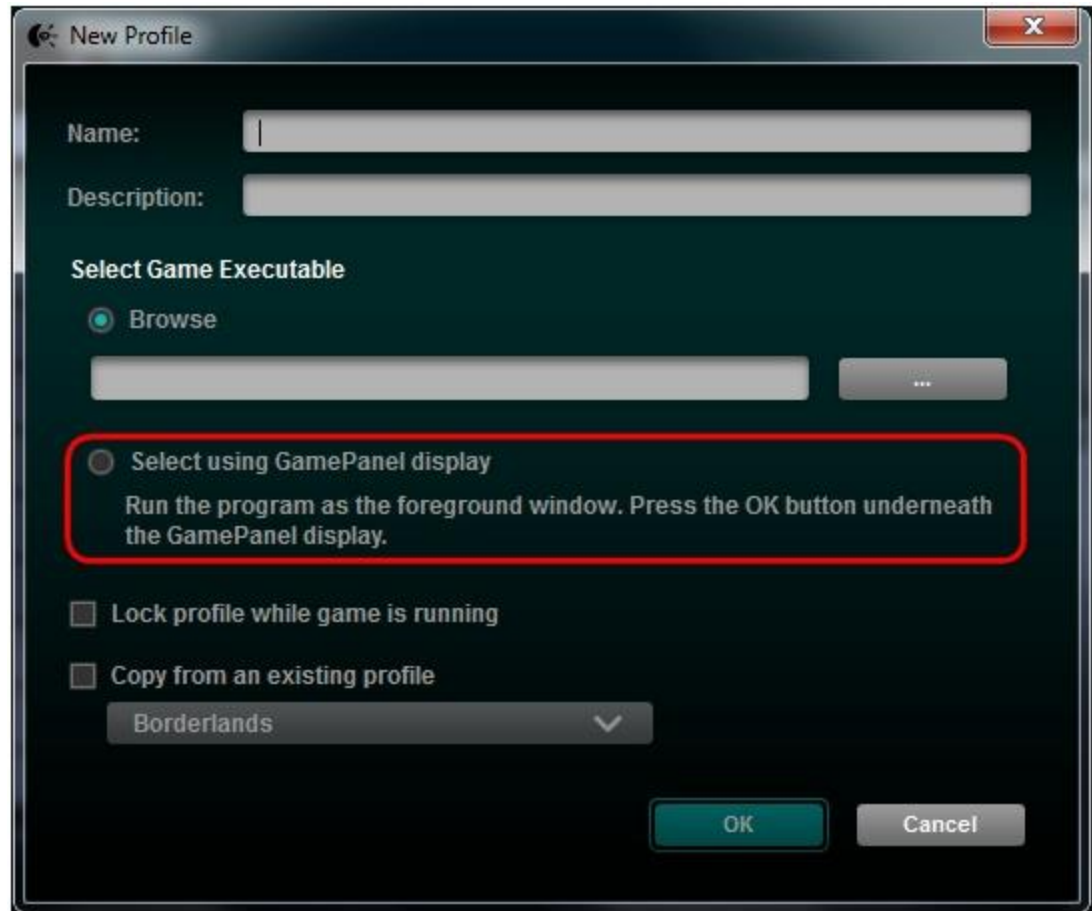


- **Name** - Enter a name for your new profile.
- **Description** - (Optional) Add a description of the profile.
- **Select Game Executable** - Locate and select the game's .exe file.

NOTE: Some games use launcher .exe applications, so make sure the profile is associated with the game's .exe file and not the launcher's. Other games use separate .exe files for single and multiplayer modes (for example, Call of Duty). If your profile isn't working, check Task Manager after the game has launched to determine if it's associated with the correct .exe. (See [360023245434](#) for more information.)

- **Lock profile while game is running** - Sometimes, background applications may jump to the "top" and disrupt your profile from activating. If this happens, you can select this check box to lock the profile so it's active regardless of the "top" application. Locking a profile may also help where the profile works when the game is launched, but stops working afterward.
- **Copy from an existing profile** - If you prefer, you can base a new profile off one that already exists. This is useful when you're making profiles for games with both single and multiplayer .exe files.

NOTE: If you have a G-Series keyboard with an LCD screen installed, you'll see a slightly different window with an additional option.



- **Select using GamePanel display** - Select this option if you're having trouble associating a profile with the correct .exe (see [360023245434](#) for more information).
5. Click **OK** to finish setting up your new profile.

Your new profile should now be visible in the Profiles area at the top of the window. If the Logitech Gaming Software was able to detect an icon for the application before, it should appear with your profile.

- **+Setting gaming-keyboard profiles to be Persistent or Default using Logitech Gaming Software**

Logitech Gaming Software (LGS) has two special profile states:

- **Default** (used when no other active profile is detected)
- **Persistent** (overrides all app-specific profiles)

Setting a Default Profile

Logitech Gaming Software (LGS) comes pre-installed with a Default Profile. LGS uses the Default Profile when no other profile is currently running. You can assign any profile of your choice to be the Default Profile by following the steps below.

To set a profile as default:

1. Open the Logitech Gaming Software:

Start > All Programs > Logitech > Logitech Gaming Software 8.x

2. Click the glowing G-Keys.



3. Right-click the profile of your choice and select "Set As Default".



The profile you chose is now set as the default. If you right-click on it in the list, there should be a check mark next to "Set As Default". This will be the active profile when no other profiles are running.

NOTE: To return to the preinstalled Default Profile, follow the above steps, selecting "Default Profile" in Step #3.

Setting and disabling a Persistent Profile

A Persistent Profile is one you manually select to be used for all applications. It will override any application-specific profile assignments. You can use this to troubleshoot poor profile-performance or to make configuring your gaming mouse simpler.

To set a profile as persistent:

1. Open the Logitech Gaming Software:

Start > All Programs > Logitech > Logitech Gaming Software 8.x

2. Click the glowing G-Keys.



3. Right-click the profile you're having trouble with and select "Set As Persistent".



The profile you chose is now set as the Persistent Profile. If you right-click on it in the list, there should be a check mark next to "Set As Persistent". This profile will now act as the active profile whenever an application is launched, overriding any application-specific profile assignments.

To disable the Persistent Profile:

1. Right-click the current Persistent Profile.
2. Select "Set As Persistent". The check mark should disappear and this profile will no longer override other profiles.

• +Viewing current gaming-keyboard profiles

To see what profiles you have currently available for your gaming keyboard:

1. Open the Logitech Gaming Software:

Start > All Programs > Logitech > Logitech Gaming Software 8.x

2. Click the glowing G-Keys.



The profiles you've created will show in alphabetical order in the Profiles area at the top.



- +Troubleshooting gaming-keyboard profile detection using Logitech Gaming Software

You can configure your gaming keyboard separately for each game or application on your computer (see [360023244954](#) for instructions). When a game is launched, the profile associated with it should activate. Sometimes, the profile doesn't activate properly, which can prevent game-specific settings from being applied.

When a game profile isn't activating properly:

- Try using a Persistent Profile (see answer [360023244954](#) for instructions).

NOTE: Using a persistent profile will help you determine if the Logitech Gaming Software is working properly.

- Make sure the correct .exe file is selected for the game (see answer [360023244954](#) for help).
- Check that both the single player and multiplayer .exe files have profiles (see answer [360023244954](#) for help).

- **+Troubleshooting G-Key assignments and macros using Logitech Gaming Software**

When your G-Key assignments and macros aren't working the way you configured them, the problem usually has to do with the active profile.

Here are some ways to try and resolve this issue:

- Lock the profile while the game is running (see answer [360023244834](#) for instructions).
- Try using a Persistent Profile to determine if the software is working properly (see answer [360023244834](#) for instructions).
- Check that the correct .exe is selected for the game (see answer [360023244834](#) for help).
- Make sure both the single player and multiplayer .exes have profiles (see answer [360023244834](#) for help).

- **+Importing gaming-keyboard profiles using Logitech Gaming Software**

Logitech Gaming Software (LGS) comes with support for hundreds of games built in. When you first run the software, it should scan and automatically set up game profiles for you. If you install more games later, you can rescan for supported games and have profiles imported for them.

To scan for supported games and import pre-made profiles:

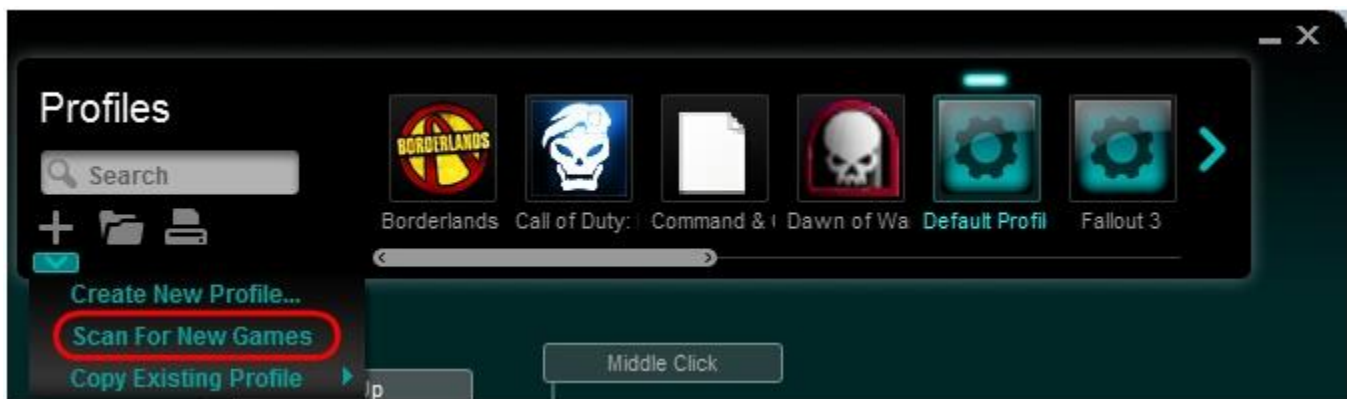
1. Open the Logitech Gaming Software:

Start > All Programs > Logitech > Logitech Gaming Software 8.x

2. Click the glowing G-Keys.



3. Move the cursor over the "+" icon in **Profiles** and look for the down arrow to appear.
4. Click the down arrow under the "+" and click "Scan For New Games".



A pop-up window will display while the software scans for games. All detected games will be visible at the top of the list with a check mark next to them. Newly detected

games will be highlighted in teal. These games will have profiles added to your system when you click **OK**.



NOTE: To add a profile to a game that wasn't detected, find the game that's highlighted in white in the list and select the check box next to it.

5. Click **OK**. The software will automatically import the profiles for the newly detected games, and for any game you've selected manually.

NOTE: For any games you've selected manually, make sure to edit the newly created profile so the correct game .exe file is assigned to it. To manually assign the game .exe, see answer [360023406853](#).

- **+Locking a gaming-keyboard profile using Logitech Gaming Software**

Logitech Gaming Software works with Windows to detect your "top" application, which is usually the game you're playing. Unfortunately, antivirus software and other utilities may jump to the top at any time and disrupt the working of your game profile. If your profile stops working, you can lock it in the Logitech Gaming Software. This way, it will be active regardless of the new "top" application detected.

To lock a profile:

1. Open the Logitech Gaming Software:

Start > All Programs > Logitech > Logitech Gaming Software 8.x

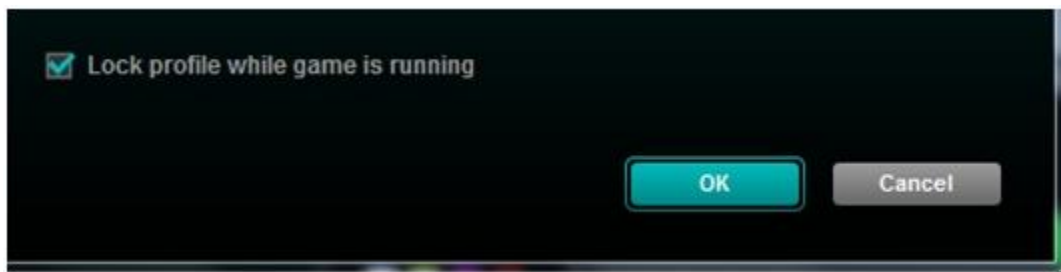
2. Click the glowing G-Keys.



3. Right-click the game profile you want to lock and select **Properties**.



4. Select the check box labeled "Lock profile while game is running".



5. Click **OK** to save the setting.

The profile you chose will now be locked while the game is running. This means your profile will remain active even if other applications activate while you're playing.

- **+My gaming-keyboard profile stopped working after a game update**

Each profile is associated to a specific .exe file. Sometimes, when you install a game update or expansion pack, the location of the correct.exe may change.

If you recently installed a game update and then your game profile stopped working, see answer [360023243034](#) for help with finding the current game .exe.

- **+Linking profiles between a G-Series keyboard and gaming mouse using Logitech Gaming Software**

Logitech Gaming Software (LGS) shares the profiles between your G-Series keyboard and your gaming mouse, so no manual profile linking is needed. Macros and keystrokes you configured for your G-Series keyboard can be assigned to your gaming mouse, and mouse button presses you configured for your gaming mouse can be assigned to your G-Series keyboard.

NOTE: Certain mouse-specific buttons, like DPI Shift, can only be used with LGS-compatible mice. If you assign a G-Key on your keyboard as DPI Shift with a non-LGS mouse, the button will have no effect. Most other button presses, like Left and Right Click, can be assigned to your G-Keys.

- **+Gaming mouse and keyboard compatibility with USB hubs and KVM switches**

We don't support the use of third-party devices with our mice and keyboards. They can interfere with communication between a mouse or keyboard and the computer.

Unsupported third-party devices include:

- KVM switch boxes
- Port replicators
- Docking stations
- USB hubs

NOTE: The manufacturers of these third-party devices implement keyboard and mouse support in different ways. There is currently no industry standard.

- **+Solved - Issue with USB devices after Windows 10 update KB4074588**

Logitech is aware of a Microsoft update (OS Build 16299.248) which is reported to affect USB support on Windows 10 computers.

Support statement from Microsoft

"After installing the February 13, 2018 security update, KB4074588 (OS Build 16299.248), some USB devices and onboard devices, such as a built-in laptop camera, keyboard or mouse, may stop working for some users."

If you are using Microsoft Windows 10, (OS Build 16299.248) and are having USB-related issues. Microsoft has released a new update KB4090913 (OS Build 16299.251) to resolve this

issue.

We recommend you follow Microsoft Support recommendations and install the latest Microsoft Windows 10 update: <https://support.microsoft.com/en-gb/help/4090913/march5-2018kb4090913osbuild16299-251>.

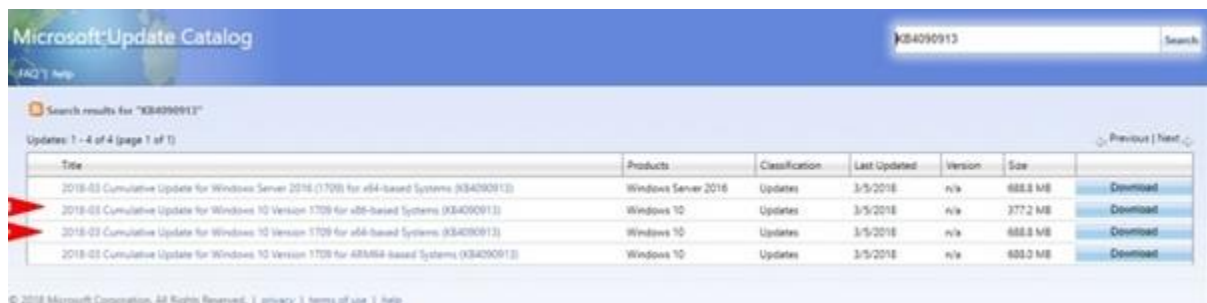
This update was released by Microsoft on March 5th in order to address the USB connection issues and should be downloaded and installed automatically using Windows Update.

For instructions on installing the latest Microsoft update, please see below:

- [If you have a working keyboard/mouse](#)
- [If you have a non-working keyboard/mouse](#)

If you have a working keyboard/mouse:

1. [Download](#) the latest Windows update from Microsoft.
2. If your operating system is 86x-based, click on the second option. If your operating system is 64x-based, click on the third option.



The screenshot shows the Microsoft Update Catalog search results for KB4090913. The search results table lists four updates, with the second and third rows highlighted by red arrows. The table columns are Title, Products, Classification, Last Updated, Version, Size, and Download.

Title	Products	Classification	Last Updated	Version	Size	Download
2018-03 Cumulative Update for Windows Server 2016 (1709) for x64-based Systems (KB4090913)	Windows Server 2016	Updates	3/5/2018	n/a	888.8 MB	Download
2018-03 Cumulative Update for Windows 10 Version 1709 for x86-based Systems (KB4090913)	Windows 10	Updates	3/5/2018	n/a	377.2 MB	Download
2018-03 Cumulative Update for Windows 10 Version 1709 for x64-based Systems (KB4090913)	Windows 10	Updates	3/5/2018	n/a	888.8 MB	Download
2018-03 Cumulative Update for Windows 10 Version 1709 for ARM64-based Systems (KB4090913)	Windows 10	Updates	3/5/2018	n/a	888.8 MB	Download

3. Once you have downloaded the update, double-click on the downloaded file and follow the on-screen instructions to complete the update installation.

NOTE: If you wish to install the update manually, you can download the 86x and 64x versions of the update from <http://www.catalog.update.microsoft.com/360023357433.aspx?q=KB4090913>

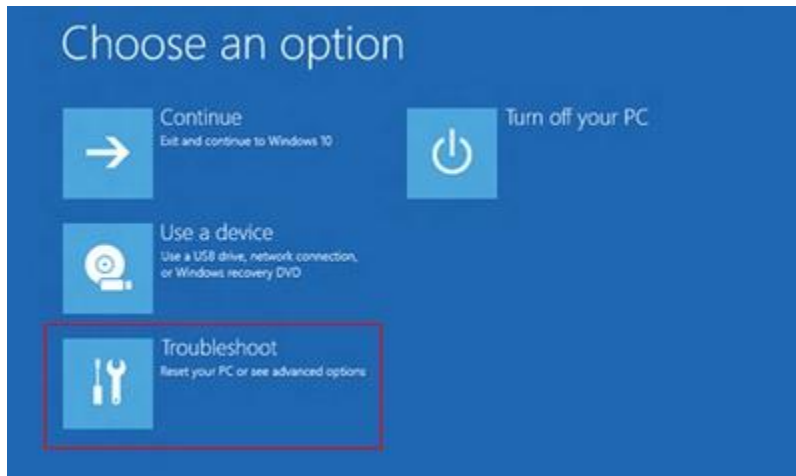
If you currently have no working keyboard/mouse:

For more information, see the Microsoft article on how to start and use the Windows 10 Recovery Environment (WinRE):

<https://support.microsoft.com/en-us/help/4091240/usb-devices-may-stop-working-after-installing-the-february-13-2018-upd>

Do the following:

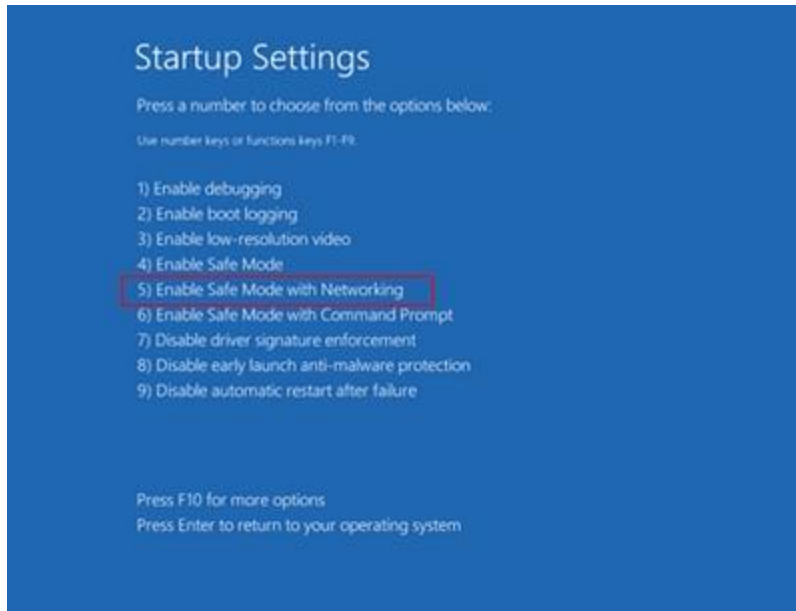
1. Restart the system before Windows finishes loading the desktop three times in a row. Windows should automatically start the Windows 10 Recovery Environment (WinRE).



2. Once in WinRE select **Troubleshoot** > **Advanced Options** > **Startup Settings**.
3. In the bottom right corner of the window, click **Restart**.



4. Press **5** on your keyboard to select **Enable Safe Mode with Networking**.



5. In Windows Safe Mode, navigate to Windows Settings (**Win+I**) > **Update and Security** > **Windows Update** and install the latest updates.

- **+List of Logitech Gaming Software default starting profiles**

As of the release of LGS v8.98.234.

- 007 Nightfire
- 2002 FIFA World Cup
- 4X4 Evolution
- Act of War
- Age of Conan: Hyborian Adventures
- Age of Mythology
- Agents of Mayhem
- Aion
- Alien: Isolation
- Aliens vs. Predator - Steam
- Aliens vs. Predator 2
- Allegiance
- Alone in the Dark
- American Truck Simulator
- America's Army
- Anachronox
- Asheron's Call 2
- Assassin's Creed
- Assassin's Creed 2
- Assassin's Creed Brotherhood
- Assassin's Creed IV Black Flag (Multiplayer)
- Assassin's Creed IV Black Flag (Single Player)

- Assassin's Creed Origins
- Assassin's Creed Unity
- Assetto Corsa
- Asura
- Attack Squadron
- Auto Assault
- B17 Flying Fortress
- Baldur's Gate
- Baldur's Gate 2*Shadows of Amn
- Batman: Arkham Asylum
- Batman: Arkham City
- Batman: Arkham Origins (Online)
- Batman: Arkham Origins (Single Player)
- Battle for Naboo
- Battle of Britain
- Battleborn
- Battlefield 1
- Battlefield 1942
- Battlefield 2
- Battlefield 2142
- Battlefield 3
- Battlefield 4
- Battlefield Bad Company 2
- Battlefield Hardline
- Battlefield Vietnam
- BattleZone 2
- Beetle Buggin'
- Beyond Good & Evil
- Bionic Commando - Steam
- Bionic Commando (Steam)
- Bioshock
- BioShock 2 (Multiplayer)
- BioShock 2 (Single Player)
- BioShock Infinite
- Birth of the Federation
- Black Thorn
- BlackHawk Down
- Blacklight Retribution
- BloodRayne
- Blur
- Borderlands
- Borderlands 2
- Borderlands: The Pre-Sequel
- Brink
- Broken Sword
- Brood War

- Brothers In Arms Hell's Highway
- Brothers In Arms: Earned in Blood
- Brothers in Arms: Road to Hill 30
- Bulletstorm
- Burnout Paradise
- C&C Red Alert 2
- C&C Renegade
- C&C Tiberian Sun
- Caesar 3
- Call of Duty
- Call of Duty : Infinite Warfare
- Call of Duty 4 - Multiplayer
- Call of Duty 4 - Single Player
- Call of Duty 4: Modern Warfare (Multi-player)
- Call of Duty 4: Modern Warfare (Single Player)
- Call of Duty Advanced Warfare
- Call of Duty: BLACK OPS
- Call of Duty: Black Ops II (multi player)
- Call of Duty: Black Ops II (single player)
- Call of Duty: Black Ops III
- Call of Duty: Ghosts
- Call of Duty: Modern Warfare 2 (Multi-player)
- Call of Duty: Modern Warfare 2 (Single Player)
- Call of Duty: Modern Warfare 3 (Multi-player)
- Call of Duty: Modern Warfare 3 (Single Player)
- Call of Duty: World at War (Multiplayer)
- Call of Duty: World at War (Single Player)
- Call of Duty: WWII
- Call of Juarez - Bound In Blood (Steam)
- Carmageddon 2
- Champions Online
- Chronicles of Riddick
- City of Heroes
- City of Heroes/City of Villains
- Civ IV: Colonization
- Civilization IV
- Clone Campaigns
- Cloudy With A Chance of Meatballs
- Cold Zero
- Colin McRae Rally 2.0
- Comanche 4
- Combat
- Combat Flight Sim 2
- Combat Flight Simulator
- Combat Flight Simulator 3
- Command & Conquer 3 Tiberium Wars

- Commandos Strike Force
- Conflict Desert Storm
- Counter-Strike
- Counter-Strike Source
- Counter-Strike: Global Offensive
- Crashday
- Crimson Skies
- Cryostasis
- Crysis
- Crysis 2 - Steam
- Crysis Warhead
- Crysis Wars
- Daikatana
- DAoC - Shrouded Isles
- Dark Age of Camelot
- Dark Reign 2
- Dark Souls II
- Dark Souls III
- Dark Void
- Darkspore (Steam)
- Darkstone
- Dawn of War
- Day of Defeat: Source (HL engine)
- DCS Black Shark
- Dead Island (Steam)
- Dead Space 2
- Deadly Dozen
- Deadspace
- Default Profile
- Delta Force 2
- Descent 3
- Desperados 2 Cooper's Revenge
- Destiny 2
- Deus Ex
- Deus Ex: Human Revolution (Steam)
- Deus Ex: Mankind Divided
- Devil May Cry - DirectX 10
- Devil May Cry 4 - DirectX 10
- Devil May Cry 4 - DirectX 9
- Diablo II
- Diablo II - Lord of Destruction
- Diablo III
- Die Hard Nakatomi Plaza
- Dig Dug Deeper
- Dirt
- Dirt 2

- DiRT 3
- DiRT Rally
- Dirt Track Racing
- Dishonored
- Dishonored 2
- Distance
- Divine Divinity
- DOOM
- Doom 3
- Dota 2
- Dragon Age - Origins
- Dragon Age 2
- Dragon Age: Inquisition
- DS Legends of Aranna
- Duke Nukem Forever - Steam
- Dune 2000
- Dungeon Keeper 2
- Dungeon Siege
- Dungeon Siege III
- Dungeons & Dragons Online Stormreach
- El Matador
- Elder Scrolls IV - Oblivion
- Elite: Dangerous
- Emperor RotMK
- Emperor's Tomb
- Empire Earth 3
- Enemy Territory - QUAKE Wars
- Enemy Territory- Quake Wars
- Enter the Matrix
- Escape From Monkey Island
- Euro Truck Simulator 2
- Eurofighter Typhoon
- European Air War
- EverQuest
- EverQuest 2
- Evolve
- Excel 2013
- F.E.A.R.
- F.E.A.R. 2
- F.E.A.R. 3
- F1 2000
- F1 2002
- F1 2015
- F22 Lightning 3
- Fable III
- Falcon 4.0: Allied Force

- Falcon AF
- Fallout 3
- Fallout: New Vegas
- Far Cry
- Far Cry 2
- Far Cry Primal
- Farming Sim 15
- Fate of the Dragon
- FEAR2
- Fellowship of the Ring
- FIFA 2001
- FIFA 2002
- FIFA 2003
- Fighter Ace 2
- Fighter Squadron
- Fleet Command
- Flight Sim 2002
- Flight Simulator 2000
- Flight Simulator X
- Fly 2K
- Fly* II
- For Honor
- Force Commander
- Fortnite
- Freedom Fighters
- Freedom Force
- Freedom Force vs. The 3rd Reich
- Freespace 2
- Frontlines - Fuel of War
- FUEL
- Galactic Battlegrounds
- Garry's Mod
- Gas Guzzlers Extreme
- Gears of War
- Generals
- Ghost Recon
- Ghost Recon AW2 - Single Player
- Ghost Recon Wildlands
- Giants* Citizen Kabuto
- Gigantic
- Global Operations
- Godfather 2
- Gothic
- Grand Prix 3
- Grand Prix 4
- Grand Prix Legends

- Grand Theft Auto Episodes from Liberty City
- Grand Theft Auto III
- Grand Theft Auto V
- Grand Theft Auto: San Andreas - Steam
- GRID
- GRID 2
- GrID Autosport
- Gruntz
- GT Legends
- GTA Vice City
- GTA4
- GTR
- GTR 2
- GTR: Evolution (Offline)
- Guild Wars
- Guild Wars 2
- Gun
- Half-Life
- Half-Life 2, EP1, EP2, Deathmatch
- Halo 2
- Harley* Race Across America
- Harry Potter
- Harry Potter II* COS
- Hawken
- Heavy Gear 2
- Hellgate: London
- Heroes of the Storm
- Heroes V - Might and Magic
- Hidden & Dangerous
- Hidden & Dangerous 2
- High Heat 2003
- High Heat Baseball 2001
- Hitman
- Hitman 2
- Homefront -Steam
- Homefront: The Revolution
- Homeworld Cataclysm
- Homeworld Remastered Collection
- Hunted: The Demon's Forge
- Hydrophobia: Prophecy (Steam)
- Icewind Dale
- Icewind Dale II
- IGI 2 Covert Strike
- IL-2 Forgotten Battles
- IL-2 Forgotten Battles (Steam)
- IL2 Sturmovik

- iRacing
- Ironman
- James Bond: Blood Stone
- Jane's FA-18
- Jane's WWII Fighters
- Jedi Knight II Jedi Outcast
- Jericho
- Just Cause 2
- Kane & Lynch - Dead Men
- Kingdom Come: Deliverance
- Kingdoms of Amalur
- Knights of the Old Republic
- KOTOR 2
- Land Warrior
- LawBreakers
- League of Legends
- Left4Dead
- Left4Dead2
- Legendary
- Lego Batman
- LEGO Harry Potter: Years 1-4
- Lego Indiana Jones The Original Adventures
- Lego Star Wars III: The Clone Wars
- Lego Universe
- Lineage II
- Lock On
- Lord of the Rings Online
- Lord of the Rings: War in the North (Steam)
- LOTR Battle for Middle Earth
- Mad Max
- Madballs In Babo: Invasion (Steam)
- Madden 2002
- Madden 2003
- Madden NFL 2001
- Mafia III
- Magicka (Steam)
- Mass Effect: Andromeda
- Mass Effect
- Mass Effect 2
- Mass Effect 3
- Master of Orion
- Matrix Path of Neo
- Max Payne
- Max Payne 2: The Fall of Max Payne
- MDK 2
- Mech Commander

- MechWarrior 4
- Medal of Honor - Multiplayer
- Medal of Honor - Single Player
- Medal of Honor Airborne
- Medal of Honor Pacific Assault
- Medal of Honor Warfighter
- Medal of Honor* Allied Assault
- Men of War
- Mercenaries 2: World in Flames
- Messiah D3D
- Metal Gear Solid
- METAL GEAR SOLID V: THE PHANTOM PAIN
- Metal Gear Survive
- Michelin Rally Masters
- Middle-earth: Shadow of Mordor
- Middle-earth: Shadow of War
- Midtown Madness 2 *Gamepad*
- Midtown Madness 2 *Joystick*
- Midtown Madness 2 *Wheel*
- Mig Alley
- Might and Magic VIII
- Mirror's Edge
- Mobile 1 Rally
- Monaco Grand Prix 2
- Monopoly Tycoon
- Monster Truck Madness 2
- Morrowind
- Mortal Kombat 4
- Moto Racer 3
- Motocross Madness 2
- MS Baseball 2001
- MS Flight Simulator 2004
- MW 4 Black Knight
- NASCAR 4
- NASCAR Racing 2003 Season
- NASCAR Revolution
- NASCAR Thunder 2004
- Natural Selection 2
- NBA Live 2000
- NBA Live 2003
- Need For Speed High Stakes
- Need for Speed Porsche Unleashed
- Need for Speed SHIFT
- Need for Speed Undercover
- Need For Speed Underground 2
- Neverwinter Nights

- Neverwinter Nights 2
- Neverwinter Online
- NFS 2016
- NFS Hot Pursuit
- NFS Hot Pursuit 2
- NFS Underground
- NHL 2001
- NHL 2002
- NHL 2004
- Night At The Museum 2
- No Man's Sky
- No One Lives Forever
- No One Lives Forever 2
- Nosferatu
- Nox
- Operation Flashpoint
- Operation Flashpoint: Red River
- Overlord
- Overwatch
- Pac-Man Adventures in Time
- Phantom Menace
- Photoshop CC
- Pirates of the Burning Sea
- Pirates!
- Planetside
- Planetside 2
- PLAYERUNKNOWN'S BATTLEGROUNDS
- Pod Racer
- Portal (HL2 engine)
- Portal 2
- Powerslide
- Prey
- Prey (2017)
- Prince Caspian - Chronicles of Narnia
- Prince of Persia
- Project CARS
- Project Cars 2
- Project Eden
- Project IGI
- Prototype
- Pure
- Quake 3 Arena
- Quantum of Solace
- Quidditch World Cup
- R6* Covert Operations
- RACE 07

- RaceRoom
- RAGE
- Railroad Tycoon 2
- Railroad Tycoon 2 Gold
- Railroad Tycoon 2 TSC
- Rainbow Six
- Rainbow Six Siege
- Rainbow Six Vegas
- Rainbow Six Vegas 2
- Rainbow Six: Lockdown
- Rally Trophy
- Raven Shield
- Real War
- Red Faction II
- Red Faction: Armageddon (Steam)
- Red Faction: Armageddon (Steam) (DX11)
- Red Orchestra
- Resident Evil 4
- Resident Evil 5
- Resident Evil 7
- rFactor
- rFactor 2
- Rift
- Rise of Legends
- Rise of Nations
- Rise of Nations: Thrones and Patriots
- Rogue Spear
- Rogue Squadron 3D
- Roller Coaster Tycoon
- Rome Total War
- Rubies of Eventide
- Rust
- Rusty Hearts
- Savage
- Sebastien Loeb Rally EVO
- Section 8
- Section 8: Prejudice
- Serious Sam
- Serious Sam 2nd Encounter
- Serious Sam 3: BFE (Steam)
- Shadowrun
- Shogo Mobile Armor Division
- Sid Meier's Civilization V
- Sid Meier's Civilization VI
- Sid Meier's Railroads!
- Sim Theme Park

- SimCity 3000
- SimCity Societies
- Simpson's Hit & Run
- Sims 2
- Sin
- Sin Episodes Emergence
- Singularity
- Sniper: Ghost Warrior 2
- Soldier Of Fortune
- Soldier of Fortune II
- Soldier of Fortune Payback
- South Park The Fractured But Whole
- Space Interceptor
- Speedway Grand Prix
- Spintires
- Splinter Cell
- Splinter Cell: Conviction
- Spore
- Stalker Clear Sky
- Star Trek Armada
- Star Trek Online
- Star Wars - The Old Republic
- Star Wars Battlefront
- Star Wars Battlefront 2
- Star Wars: Battlefront II
- Star Wars Empire at War
- Star Wars Galaxies
- Star Wars The Clone Wars Republic Heroes (Steam Edition)
- Star Wars: Battlefront
- Starcraft
- StarCraft II
- Starfighter
- StarLancer
- StarSiege
- Starsiege Tribes
- Starsky & Hutch
- StarTopia
- Stock Car Extreme
- Stranglehold
- Sub Command
- Superbike 2001
- Supreme Commander
- Supreme Commander - Forged Alliance
- SW - Republic Commando
- Swat 3
- SWAT 4

- Sydney 2000
- TA Kingdoms
- Tabula Rasa
- Tactical Ops
- Task Force Dagger
- Team Fortress 2 (HL2 engine)
- Tera
- Terraria
- Test Drive 6
- Test Drive Le Mans
- Test Drive Offroad 3
- Test Drive Unlimited
- The Club
- The Crew
- The Darkness II
- The Elder Scrolls V: Skyrim (Steam)
- The Elder Scrolls V: Skyrim Special Edition(Steam)
- The Evil Within
- The Evil Within 2
- The Incredible Hulk
- The Movies
- The Secret of Monkey Island: Special Edition (Steam Version)
- The Settlers - Rise of an Empire
- The Sims 1024
- The Sims 2
- The Sims 800
- The Sims Medieval
- The Sum of All Fears
- The Witcher
- The Witcher 2
- The Witcher 3: Wild Hunt
- Thief 2* The Metal Age
- Thrillville: Off the Rails
- Tiger Woods 2003
- Tiger Woods 99
- TimeShift
- Titan Quest
- Titan Quest - Immortal Throne
- Titanfall
- Titanfall 2
- TOCA 2
- Tom Clancy's H-A-W-K
- Tom Clancy's The Division
- Tomb Raider AoD
- Tomb Raider: Anniversary
- Tonka Monster Trucks

- Tony Hawk 3
- Tony Hawk 4
- Torchlight II
- Trackmania United Forever
- Train Simulator
- Transformers: Fall of Cybertron
- Transformers: War of Cybertron
- Triple Play 2000
- Tron 2.0
- Turning Point - Fall of Liberty
- Tyranny
- Ultimate Demolition Derby
- Universe At War
- Unreal II
- Unreal Tournament 2003
- Unreal Tournament 2004
- Unreal Tournament 3
- US Special Forces
- USAF
- Vampires Bloodlines
- Vendetta Online
- Wacky Races
- Wall-E
- Wanted Weapons Of Fate - Steam
- War Front - Turning Point
- Warcraft 3: The Frozen Throne
- WarCraft III* Reign of Chaos
- Warframe
- WarHammer 40k
- Warhammer 40K Space Marine (Steam)
- Warhammer Online: Age of Reckoning
- Watch Dogs 2
- Watch_Dogs
- Wheelman
- Wolfenstein
- Wolfenstein: The New Order
- Wolfenstein II: The New Colossus
- Word 2013
- World in Conflict
- World of Tanks
- World of Warcraft
- World Racing
- XCOM 2
- XCOM: Enemy Unknown
- X-Wing Alliance
- You are Empty

- Yuri's Revenge
 - Zanzarah
 - 御龙在天 (Dragon Power)
- **+Logitech Gaming Software for Mac Release Notes**

- [Version 8.98.306](#)
- [Version 8.96.40](#)
- [Version 8.96.38](#)
- [Version 8.96.36](#)
- [Version 8.94.35](#)
- [Version 8.92.37](#)
- [Version 8.89.38](#)
- [Version 8.87.92](#)

Version 8.98.306

- **Post Date:** 1-MAY-2018
- **OS:** Mac OS X 10.11.x, Mac OS X 10.12.x, Mac OS X 10.13.x
- **Why Update?**
 - Added support for:
 - G560 LIGHTSYNC PC Gaming Speaker (DTS-X Surround Sound and Audio Visualizer not supported)
 - G513 Silver RGB Mechanical Gaming Keyboard
 - G513 Carbon RGB Mechanical Gaming Keyboard
 - G512 Carbon RGB Mechanical Gaming Keyboard
 - G430 Gaming Headset (Dolby 7.1 Surround Sound not supported)
 - G433 Gaming Headset (DTS Headphone:X® 7.1 Surround Sound not supported)
 - G533 Wireless Gaming Headset (DTS Headphone:X® 7.1 Surround Sound not supported)
 - G633 Artemis Spectrum (DTS Headphone:X® 7.1 and Dolby 7.1 Surround Sound not supported)
 - G933 Artemis Spectrum and Artemis Spectrum Snow Wireless Gaming Headset (DTS Headphone:X® 7.1 and Dolby 7.1 Surround Sound not supported)
 - Improved the UI for C920 & C922 cameras to be more consistent with other supported cameras

Version 8.96.40

- **Post Date:** 12-MAR-2018
- **OS:** Mac OS X 10.10.x, Mac OS X 10.11.x, Mac OS X 10.12.x
- **Why Update?**

- Added support for:
 - G603 Wireless Gaming Mouse
 - G613 Wireless Mechanical Gaming Keyboard
 - BRIO 4K STREAM EDITION Camera
 - Added a firmware update for the G102 and G203 to increase the max sensor DPI to 8000
 - Added option to gather anonymous data to help us understand how LGS is used so we can improve it in future releases
 - Minor bug fixes
-

Version 8.96.38

- **Post Date:** 18-OCT-2017
 - **OS:** Mac OS X 10.10.x, Mac OS X 10.11.x, Mac OS X 10.12.x
 - **Why Update?**
 - Added support for:
 - G603 Wireless Gaming Mouse
 - G613 Wireless Mechanical Gaming Keyboard
 - BRIO 4K STREAM EDITION Camera
 - Added a firmware update for the G102 and G203 to increase the max sensor DPI to 8000
 - Added option to gather anonymous data to help us understand how LGS is used so we can improve it in future releases
 - Minor bug fixes
-

Version 8.96.36

- **Post Date:** 19-SEP-2017
 - **OS:** Mac OS X 10.10.x, Mac OS X 10.11.x, Mac OS X 10.12.x
 - **Why Update?**
 - Added support for:
 - G603 Wireless Gaming Mouse
 - G613 Wireless Mechanical Gaming Keyboard
 - BRIO 4K STREAM EDITION Camera
 - Added a firmware update for the G102 and G203 to increase the max sensor DPI to 8000
 - Added option to gather anonymous data to help us understand how LGS is used so we can improve it in future releases
 - Minor bug fixes
-

Version 8.94.35

- **Post Date:** 1-AUG-2017

- **OS:** Mac OS X 10.10.x, Mac OS X 10.11.x, Mac OS X 10.12.x
 - **Why Update?**
 - Support added for:
 - POWERPLAY Wireless Charging System
 - G703 LIGHTSPEED Wireless Gaming Mouse
 - G903 LIGHTSPEED Wireless Gaming Mouse
 - Minor bug fixes
-

Version 8.92.37

- **Post Date:** 19-APR-2017
 - **OS:** Mac OS X 10.10.x, Mac OS X 10.11.x, Mac OS X 10.12.x
 - **Why Update?**
 - Support added for:
 - G90 Gaming Mouse
 - Pro Mechanical Gaming Keyboard
 - G413 Mechanical Gaming Keyboard
 - Firmware Update:
 - LogiProGamingKeyboardUpdate_v13 - Optimizes key response rates for faster gaming performance.
 - Minor bug fixes
-

Version 8.89.38

- **Post Date:** 16-FEB-2017
- **OS:** Mac OS X 10.10.x, Mac OS X 10.11.x, Mac OS X 10.12.x
- **Why Update?**
 - Support added for:
 - G102 Prodigy Gaming Mouse
 - G203 Prodigy Gaming Mouse (black only)
 - C922 Pro Stream Webcam
 - New Features:
 - Custom Lighting Effects Editor added to the Lighting view for per-key RGB keyboards
 - G410 Atlas Spectrum
 - G810 Orion Spectrum
 - G910 Orion Spectrum
 - G910 Orion Spark
 - Optional firmware update for the G610 Orion keyboard to address a high pitch whine on some keyboards
 - Firmware Update:

- G410Update_v14 - Enhanced lighting effects performance for use with Lighting Editor features.
 - G610Update_v12 - Eliminates noise that occurred at some lighting levels and settings.
 - G810Update_v31 - Enhanced lighting effects performance for use with Lighting Editor features.
 - G910Update_v26 - Enhanced lighting effects performance for use with Lighting Editor features.
 - G910R2Update_v7 - Enhanced lighting effects performance for use with Lighting Editor features.
 - Minor bug fixes
-

Version 8.87.92

- **Post Date:** 12-OCT-2016
- **OS:** Mac OS X 10.10.x, Mac OS X 10.11.x, Mac OS X 10.12.x
- **Why Update?**
 - Support added for:
 - G403 Prodigy Gaming Mouse
 - G403 Prodigy Wireless Gaming Mouse
 - G213 Prodigy Gaming Keyboard
 - Pro Gaming Mouse
 - C920 HD Pro Webcam
 - C930e Pro Webcam
 - G29 Driving Force
 - G920 Driving Force
 - G610 Orion US-International Keyboard (PID_338)
 - G810 Orion Spectrum US-International Keyboard (PID_337)
 - Firmware Update:
 - G910Update_v22: Fixed an issue where the Caps, Num, and Scroll Lock indicator lights may not show the correct status.
 - G810Update_v27: Fixed an issue where the Caps, Num, and Scroll Lock indicator lights may not show the correct status.
 - G920Update_96_3_49:
 - Fixed an issue with missing forces in rFactor 2.
 - Removed single-sided damping effect at low forces.
 - Fixed various minor issues with Force Feedback on PC.
 - Wheel range no longer resets to 900 degrees when entering XBox One dashboard.
 - Release Notes:
 - G920 Driving Force is not supported in Euro Truck Simulator 2 and American Truck Simulator
 - G29 Driving Force is not supported in GRID Autosport

- **+Create and scan for profiles with Logitech Gaming Software**

Logitech Gaming Software (LGS) includes support for approximately six hundred games as of release 8.91. When you run the software for the first time, it should scan and automatically set up game profiles for you. If you install more games later, you can rescan for supported games and have profiles imported for them. You use profiles to customize pointer, lighting or G-key/function key command assignments for every individual game and application. If you prefer, you can also just use one profile for all your games and applications.

There are two ways to set up profiles for your games or applications:

- [Scan for new games](#)
- [Create new profiles](#)

Scan For New Games

Logitech Gaming Software's game profiles are created using registry entries from either Steam, uPlay, Battle.net, or Origin. Certain game profiles are associated with multiple publisher's registry entries, but the majority are linked to the Steam registry entry, excluding the games that are available exclusively on Battle.net or Origin. See a complete list of games [here](#).

1. Open Logitech Gaming Software (LGS).
2. Navigate to the Home window for your mouse, keyboard or headset.
3. Select **Customize buttons**, **Customize Function keys** or **Customize G-keys** depending on the device.
4. In the Profiles pane, click **Scan For New Games**.



5. Once the profiler has completed its scan, click **OK** to add the profiles to your list.
NOTE: A profile for the selected game should appear in the Profiles pane.

If you own a game that is not automatically detected by the Scan for New Games feature, you can make a few minor adjustments to set up the profile. For more information, please see [Scan For New Games does not detect game in Logitech Gaming Software](#).

Create new profiles

If the Scan For New Games list does not contain the game you want, LGS offers the ability to create your own profile. Here's how:

TIP: LGS can store profiles for any program executable (.exe) file. Use this to customize commands assignments for productivity programs.

1. Open Logitech Gaming Software (LGS).
2. Navigate to the Home window for your mouse, keyboard or headset.
3. Select **Customize buttons**, **Customize Function keys** or **Customize G-keys** depending on the device.
4. In the Profiles pane, click **Create new profile** ("+").



The **New Profile** window appears:

A screenshot of the 'New Profile' window in LGS. The window has a dark background and a title bar with the Logitech logo and the text 'New Profile'. It contains several input fields and checkboxes. At the top, there is a 'Name:' label followed by a text input field. Below that is a 'Description:' label followed by a text input field. Underneath these is a section titled 'Games and apps that use this profile:' followed by a large, empty rectangular box. Below this box are two checkboxes: the first is '+ -' (add/remove) and the second is 'Lock profile while game is running'. Below these is another checkbox labeled 'Copy from an existing profile', which is checked. Below this checkbox is a dropdown menu with 'Default Profile' selected. At the bottom right of the window are two buttons: 'OK' and 'Cancel'.

5. Type distinct names for your profile in the **Name** and **Description** boxes.

6. Click “+” and use the Windows Explorer window that appears to navigate to and open your executable (.exe) file.
NOTE: You can assign multiple executable files to the same LGS profile.
7. Select the checkbox to **Lock profile while game is running** to prevent other profiles from becoming active while your game or application is running.
8. If you prefer to use another profile’s lighting, command assignment or pointer settings as a starting point, select the checkbox to **Copy from an existing profile**. Use the drop-down menu to select a profile to copy settings from.
9. Click **OK** to save changes and add the new profile.
NOTE: A new profile for the game or application should appear in the Profiles pane.

- **+View current profiles in Logitech Gaming Software**

To see your current gaming profiles in Logitech Gaming Software (LGS) for your gaming mouse, keyboard or headset:

1. Open Logitech Gaming Software
2. Select your product by using the arrows at the bottom left of the LGS window.



3. Do one of the following, depending upon your device type:
 - Mouse — click **Customize Buttons** if your mouse is in Automatic Game Detection mode. Click **Customize on-board profile** if your mouse is in On-Board Memory mode.



- Keyboard — click **Customize Function Keys** or **Customize G-Keys**.



- Headset — click **Customize G-Keys**.



4. The profiles you've created will show in alphabetical order in the **Profiles** area at the top of the window.



- **+Digital signature error when Logitech Gaming Software is installed on Windows 7 computers**

You may see a digital signature error when you install Logitech Gaming Software (LGS) on some Windows 7 computers. All recent versions of LGS require the following Microsoft Windows security update to be installed prior to installing LGS:

- Security Update for Windows 7 Systems (KB3033929)

The security update adds support for SHA-2 driver signing and verification functionality. There are two versions — one for Windows 7 32-bit (x86) and one for Windows 7 64-bit (x64). Make sure you've downloaded and installed the correct version for your computer before you install LGS.

- **+Logitech Gaming Software for Windows Release Notes**

- [Version 8.98.234](#)
- [Version 8.96.88](#)
- [Version 8.94.108](#)
- [Version 8.92.67](#)
- [Version 8.91.48](#)
- [Version 8.90.117](#)
- [Version 8.89.68](#)

- **Post Date:** 18-APR-2018
- **OS:** Windows 8, Windows 7, Windows 10
- **Why Update?**
 - Added support for:
 - G560 LIGHTSYNC PC Gaming Speaker
 - G513 Silver RGB Mechanical Gaming Keyboard
 - G513 Carbon RGB Mechanical Gaming Keyboard
 - G512 Carbon RGB Mechanical Gaming Keyboard
 - Improved the UI for C920 & C922 cameras to be more consistent with other supported cameras
 - New game profiles:
 - Assassin's Creed Origins
 - Call of Duty: WWII
 - Destiny 2
 - Fortnite
 - Kingdom Come: Deliverance
 - Metal Gear Survive
 - Middle-earth: Shadow of War
 - Project Cars 2
 - South Park The Fractured But Whole
 - Star Wars: Battlefront II
 - The Evil Within 2
 - Wolfenstein II: The New Colossus
 - Minor bug fixes.

Version 8.96.88

- **Post Date:** 21-AUG-2017
- **OS:** Windows 8, Windows 7, Windows 10
- **Why Update?**
 - Support added for:
 - G603 Wireless Gaming Mouse
 - G613 Wireless Mechanical Gaming Keyboard
 - Brio 4K Streaming Edition Webcam
 - Added a firmware update for the G102 and G203 to increase the max sensor DPI to 8000
 - Added option to gather anonymous data to help us understand how LGS is used so we can improve it in future releases
 - New game profiles for:
 - Agents of Mayhem
 - Gigantic
 - LawBreakers
 - Minor bug fixes

Version 8.94.108

- **Post Date:** 19-JUN-2017
- **OS:** Windows 8, Windows 7, Windows 10
- **Why Update?**
 - Added support for
 - G433 Gaming Headset
 - POWERPLAY Wireless Charging System
 - G903 LIGHTSPEED Wireless Gaming Mouse
 - G703 LIGHTSPEED Wireless Gaming Mouse
 - New game profiles:
 - Prey (2017)
 - PLAYERUNKNOWN'S BATTLEGROUNDS
 - Added a firmware update for the G403 and G900 to optimize clock tuning parameter
 - Fixed an issue with localized layouts not being correctly displayed for the G413
 - Fixed an issue where a user's custom lighting would be reverted to the HW default when locking their system
 - Minor bug fixes

Version 8.92.67

- **Post Date:** 19-APR-2017
- **OS:** Windows 8, Windows 7, Windows 10
- **Why Update?**
 - Added support for the G413 Mechanical Gaming Keyboard
 - New game profiles:
 - For Honor
 - Ghost Recon Wildlands
 - Mass Effect: Andromeda
 - Resident Evil 7
 - Minor bug fixes

Version 8.91.48

- **Post Date:** 4-JAN-2017
- **OS:** Windows 8, Windows 7, Windows 10

- **Why Update?**
 - Added support for the G90 gaming mouse
 - Added a link to Overwolf in the LGS user interface
 - Minor bug fixes.
 - Added support for the Pro mechanical gaming keyboard
-

Version 8.90.117

- **Post Date:** 4-JAN-2017
 - **OS:** Windows 8, Windows 7, Windows 10
 - **Why Update?**
 - Support added for G533 Gaming Headset
 - Minor bug fixes
-

Version 8.89.68

- **Post Date:** 15-DEC-2016
- **OS:** Windows 8, Windows 7, Windows 10
- **Why Update?**
 - Custom Lighting Effects Editor added to the Lighting View for per-key RGB keyboards.
 - Fix to address stuck mic mute issue on G933 headset.
 - New game profiles:
 - Battlefield 1
 - Call of Duty: Infinite Warfare
 - Mafia III
 - Watch Dogs 2
 - Elder Scrolls V: Skyrim Special Edition
 - Sid Meier's: Civilization VI
 - Titanfall 2
 - Dishonored 2
 - Tyranny
 - Optional G610 Orion keyboard firmware update to address a high-pitched whine on some keyboards.
 - Firmware updates for the following keyboards to enhance lighting performance with the new Lighting Effects Editor:
 - G410 Altas Spectrum
 - G810 Orion Spectrum
 - G910 Orion Spectrum
 - G910 Orion Spark

- Added an option to the G933 FW update tool allowing the user to choose between G933 and G933 Snow, so that the proper device image will show in LGS after a firmware update.
- Minor bug fixes.

• +Create macros for gaming mice and keyboards with Logitech Gaming Software

You can use Logitech Gaming Software (LGS) to create macros that automate a series of mouse button events and/or keystrokes with a single mouse button click or keypress of a G or function key.

- [Getting started with a keyboard or gaming mouse in Automatic Game Detection mode](#)
- [Getting started with a gaming mouse in On-Board Memory mode](#)
- [Add mouse events to a macro](#)
- [Add keystrokes to a macro](#)
- [Add delays to a macro](#)
- [Select a Repeat Option for the macro](#)
- [Mouse events example](#)
- [Mouse events and keystrokes with delay example](#)

Getting started with a keyboard or gaming mouse in Automatic Game Detection mode

1. Make sure your gaming mouse or keyboard is connected using the supplied USB cable. If you have a wireless gaming mouse, make sure your device is charged and the USB receiver is securely connected to a USB port.
2. Launch Logitech Gaming Software (LGS).
3. Select your gaming device and navigate to the **Home** tab.
4. If applicable, make sure the mouse or keyboard is set to **Automatic Game Detection**.
5. Click on the **Customize buttons**, **Customize G-keys** or **Customize Function Keys** icon at the bottom of the screen.



6. In the **Profiles** box, select a profile that you want to create macros for.

7. Double-click or right-click on a button and select **Assign New Command** or **Edit Command** to open the Command Editor. You can also open the Command Editor by clicking on the “+” sign in the Commands panel.



NOTE: Left and right mouse buttons can only be customized after their respective functions are assigned to other keys on the mouse.

8. In the left pane of the Command Editor window, select the **Multi Key** tab.
9. In the **Name** box, give your macro a unique name that will help you to identify it.

Getting started with a gaming mouse in On-Board Memory mode

1. Make sure your gaming mouse is connected using the supplied USB cable. If you have a wireless gaming mouse, make sure your device is charged and the USB receiver is securely connected to a USB port.
2. Launch Logitech Gaming Software (LGS).
3. Select your gaming mouse and navigate to the **Home** tab.
4. Make sure the mouse is set to **On-Board Memory**.
5. Click on the **Customize on-board profile** icon at the bottom of the screen.



6. Double-click or right-click on a button and select **Assign New Command** or **Edit Command** to open the Command Editor.
NOTE: Left and right mouse buttons can only be customized after their respective functions are assigned to other keys on the mouse.
7. Select the **Multikey Macro** tab from the left-hand pane of the Command Editor window.

Add mouse events to a macro

1. Right-click anywhere in the **Keystrokes** section of the Command Editor and hover over **Insert mouse Event**. The following options are displayed:
 - Left Button
 - Middle Button
 - Right Button
 - Wheel
 - Extra Button
2. For each mouse button, you can insert Down, Up, or Click events. If you choose the **Click** event, LGS automatically adds sequential Down and Up events.
NOTE: Although you can add separate button up and down events, it is recommended to add them both one after the other. Otherwise, the macro will execute as if the button is held down.
3. To delete events, right-click on the respective event in the **Keystrokes** section and select **Delete**. You can select multiple events by dragging the mouse while holding the left click button.
4. Once your macro is complete, click **OK**. Keyboard macros must contain at least one key press. The OK button remains grayed out until your macro meets this requirement.
NOTE: If you opened the Command Editor from the Commands pane on a keyboard or mouse in **Automatic Game Detection** mode, you'll need to drag the macro from the **Commands** list onto a mouse button or keyboard key in the **Customize buttons** window. The macro's name will be visible above the mouse button or keyboard key.

See also [Mouse events example](#).

Add keystrokes to a macro:

1. In the **Multi Key** or **Multikey Macro** tabs in the Command Editor, click **Start Recording** to begin entering keystrokes.
NOTE: Select **Record delays** between events to automatically add delays between the keystrokes you input. For example, if you press the **A** key and wait 4 seconds before

pressing the **B** key, LGS automatically includes those delays in the macro. This feature is not available on a mouse in **On-Board Memory** mode.



2. Press the keys or type on the keyboard as you would in-game.
NOTE: LGS only registers the keys that are pressed, not the symbols that result from the keystrokes. If you want to insert the “!” symbol in your macro, LGS displays shift down, up and button 1 up and down events.
TIP: Read the other sections of this article to understand how to manually add delays and mouse events to the macros you create with LGS.
3. Once you are finished adding the desired keystrokes, click **Stop Recording**.
4. You can add keystrokes to a macro even after you stop recording. Right-click any event in the **Keystrokes** section and select **Record Before Here** or **Record After Here**. Depending on which option you choose, the new keystrokes will be added either before or after the event you selected. Once you are finished adding the additional keystrokes, click **Stop Recording**.
5. Click **OK** to save the macro. Keyboard macros must contain at least one key press. The OK button remains grayed out until your macro meets this requirement.
NOTE: If you opened the Command Editor from the **Commands** pane on a keyboard or mouse in **Automatic Game Detection** mode, you'll need to drag the macro from the Commands list onto a mouse button or keyboard key in the **Customize buttons** window. The macro's name will be visible above the mouse button or keyboard key.

Add delays to a macro

Inserting delays within macro events allows you to accommodate for latency and the time required to complete in-game actions. For example, if a certain in-game action requires 2 seconds to complete, you have to add a delay so the macro waits 2 seconds before executing the rest of the sequence. You can automatically add delays between your keystrokes by selecting the **Record delays between events** checkbox below the **Keystrokes** section. However, you have to manually add delays between mouse events. The same steps apply to manually adding delays between keystrokes:

1. Right-click the event in the **Keystrokes** section of the **Command Editor** before which you want to add a delay.
2. Select **Insert Delay** from the pop-up menu.



3. LGS inserts a 0.5-second delay by default. To customize the length of the delay, double-click on the entry in the **Keystrokes** section or right-click the delay event and select **Edit**.
4. Type a value in milliseconds and then press **Enter** to save.



See also [Mouse events and keystrokes with delay example](#).

Select a Repeat Option for the macro

You can use the Command Editor to select a repeat option for your macro. By default, LGS sets the Repeat Options to **None**. You can choose from three repeat options: **None**, **While Pressed**, and **Toggle**.

NOTE: Repeat option functionality is unavailable while the mouse is in **On-Board Memory** mode.

1. Open the **Command Editor** window for the macro you want to repeat.
2. In the **Repeat Options** box, click the down arrow on the right.



3. Select one of the following options from the drop-down menu:
 - **None:** The macro only executes the keystrokes once.
 - **While Pressed:** Select this option to repeat the macro while the assigned button is pressed down.
 - **Toggle:** Clicking the button activates the macro and it repeats until the button is clicked again.

NOTE: The delay between the macro repetitions is set to 25 milliseconds by default. You can customize the length of the delay by setting a value in the **Delay (milliseconds)** box.

4. Click **OK** to save your changes.

Mouse events example

In this example, we will create a double-click macro to better understand how mouse events work.

1. Follow the [Getting Started](#) steps above.
2. Right-click in the **Keystrokes** section, hover over the **Insert Mouse Event** text, then hover over the Left Button option in the pop-up menu and select **Click** from the second pop-up menu.
3. Repeat Step 2 to insert a second Left Button click event.
4. Click **OK** to save the macro.



Mouse events and keystrokes with delay example

In this example, we will set up a macro to open the Device Manager to get acquainted with keystrokes and delays.

1. Follow the steps in the [Getting Started](#) section above.
2. Click **Start Recording**, press and hold the **Windows** key, press the **E** key, and release the **Windows** key. You should see the following commands in the Keystrokes section:



NOTE: You might see Right Windows instead of Left Windows depending on the Windows key you used.

3. Right-click the **Keystrokes** section, hover over **Insert Mouse Event**, and then over **Right Button**. Select **Click** from the pop-up menu.
4. We need to add a delay between the keystrokes and the right button click events so there is enough time to position the pointer on the Computer button in the Navigation pane. Right-click the **Right Button Down** event and select **Insert Delay**. Next, double-click the delay event, type 4000 (4s) and press Enter.



5. Repeat Step 3 but insert a **Left Button** click event instead.
6. Add a delay between the **Right Button Up** and **Left Button Down** events so there is enough time to position the cursor over the **Manage** option in the pop-up menu. Right-click the **Left Button Down** event and select **Insert Delay**. Next, double-click the delay event, type 4000 (4s) and press Enter.



7. Click **OK** to save your macro.

- +Customize gaming keyboard function keys with Logitech Gaming Software

You can use Logitech Gaming Software (LGS) version 8.91 and later to assign G-key commands to the function keys on your gaming keyboard.

- [Default function key layout](#)
- [Customize function keys](#)
- [Game-specific profile commands](#)
- [Command Editor](#)
- [Reset function keys](#)

Default function key layout

The default function key layout on your gaming keyboard utilizes the standard F1-F12 layout found on most keyboards.



Customize function keys

1. Make sure the gaming keyboard is connected to your computer, and then launch LGS.
2. Click on the icon for your gaming keyboard.
3. Click on **Customize Function Keys**.
4. Click on the profile for the function keys you want to customize.
5. To assign a command to a function key, do one of the following:
 - Double-click on the listed function key command assignment to begin assigning a new command.

- Drag and drop an existing command from the **Commands** list in the left pane onto a function key. When you drag a command over the function key, the function key area will become highlighted.
6. You can also right-click on a function key or its assignment for additional options:



- **Assign New Command** — click to open the Command Editor window.
- **Edit Command** — click to open the Command Editor window.
- **Unassign** — click to remove all command assignments from the selected function key.

Game-specific profile commands

LGS can be used to create new or to import LGS preset game profiles for compatible Logitech gaming keyboards. These profiles allow you to create customized function key configurations for compatible games on your computer.

Once you select a game-specific profile, you can drag and drop standard, custom, or LGS preset game-specific commands from the **Commands** list onto the gaming keyboard's function keys (where applicable).

Command editor

You can use the Command Editor to customize function key command assignments on your gaming keyboard.

1. Double-click on either an unassigned or assigned function key to open the Command Editor. You can create or edit a command using the following customization options:

- **Keystroke** — assign a single key press or a key press with modifiers.
 - **Multi Key** — assign a "macro'd" series of keystrokes (either with or without recorded time delays).
 - **Text Block** — create a block of text to be typed out when the function key is pressed (either with or without Unicode support).
 - **Mouse Function** — assign a function key to use any of the available mouse functions.
 - **Media** — set a function key to control media playback or volume.
 - **Hotkeys** — use a predefined keystroke command.
 - **Shortcut** — assign a function key to launch a file, folder, drive, or Web page on your computer.
 - **Function** — assign a function key to act as a Microsoft function key (ex. to open your web browser).
 - **Audio** — set a G-key to activate an audio command.
 - **Ventrilo** — assign a function key for Ventrilo commands, if installed on your computer.
2. Click **OK** to assign the desired command to the function key. The command's name will be visible over that function key in the Customize Function Keys window.

Reset function key assignments

To reset a single function key command assignment:

1. From the Customize function keys window, navigate to the **Profiles** area in the top-right corner.
2. Click on the profile for the function key you wish to reset.
3. Right-click on the function key and select one of the following options from the pop-up menu that appears:
 - **Use Generic** — click to revert the selected function key assignment to its generic function.
 - **Unassign** — click to remove all assignments from the selected function key.

NOTE: You can also remove all assignments aside from generic functions by dragging the current command from the function key to the trash icon (located at the bottom-right corner of the Commands list).

To reset all function key command assignments:

1. From the **Profile** area at the top-right corner of the LGS windows, select the profile for which you wish to reset all function key command assignments.
2. Right-click on the profile and then click **All G-keys** from the pop-up menu that appears.



3. Select one of the following options from the pop-up menu:
 - Click **Use Generic** to revert all function key assignments to their generic functions.
 - Click **Unassign** to remove all command assignments from all function keys.

NOTE: Gray-colored text menu items are not accessible.

- **+Activate Game Mode and disable keys on the G213 gaming keyboard**

Activate Game Mode

To disable the standard Windows and Menu keys, toggle the Game/Windows key on your G213 gaming keyboard. This prevents the Windows Start menu from activating during a game, which might disrupt play. The Game Mode LED indicator lights up when Game Mode is active.

NOTE: For more information, see [Game Mode and backlighting control on the G213 gaming keyboard](#).

Disable keys in Game Mode

In addition to the Windows and Menu keys, you can disable other keys in Game Mode using Logitech Gaming Software (LGS). Click the Game Mode Settings icon to begin disabling keys on your keyboard.

NOTE: If you don't have Logitech Gaming Software, you can get the latest version from this product's Download page.



In the Game Mode Settings window, click on the key(s) you want to disable. Enabled keys are shown in blue, and disabled keys are gray. To re-enable a disabled key, click on the key again. You can disable keys in Game Mode for any individual profile.

NOTE: Only the Windows and Menu keys are disabled by default. These three keys cannot be enabled in Game Mode.

For more information on creating profiles for your gaming keyboard, see [Creating new gaming-keyboard profiles](#).

- **+Game Mode and backlighting control on the G213 gaming keyboard**

The G213 gaming keyboard has keys that let you toggle between Windows and Game Mode, and enable and disable the keyboard's backlighting.

Game Mode

To enable Game Mode, press the Game Mode key. The Game Mode LED indicator lights up when the keyboard is in Game Mode.



NOTE: The Windows key is disabled when the G213 is in Game Mode.

Backlighting

To enable or disable backlighting on your keyboard, press the Backlight toggle key, located above the PAUSE key in the upper right of the keyboard. The LED lights up when backlighting is enabled.



- **+Customize lighting settings on the G213 gaming keyboard with Logitech Gaming Software**

Activate lighting

To activate lighting, press the Backlight key in the upper right corner of your G213 keyboard.

NOTE: For information on how to toggle the lighting on your gaming keyboard, see [Game Mode and backlighting control on the G213 gaming keyboard](#).

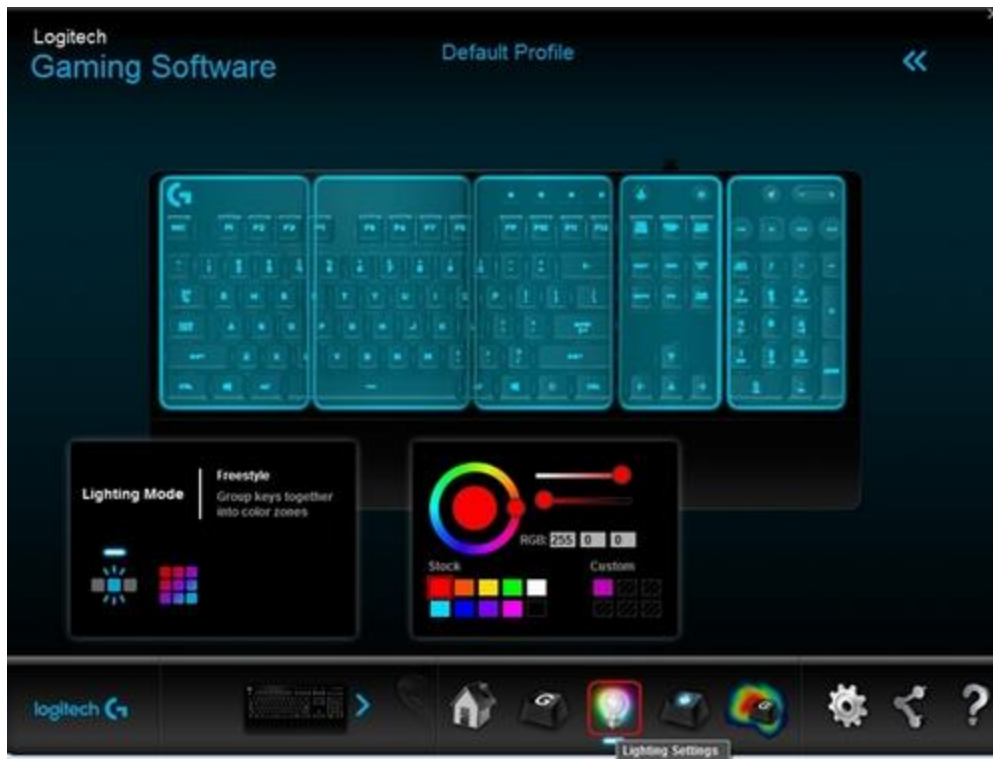
Customize Lighting settings in LGS

- [Lighting modes](#)
- [Per Profile Backlighting](#)

You can use Logitech Gaming Software (LGS) to customize your keyboard's lighting.

NOTE: If you don't have Logitech Gaming Software, you can get the latest version from this product's Download page.

Open LGS and then click the **Lighting Settings** icon. You can select from two lighting mode effects and configure lighting for different game profiles.



Lighting modes

- **Freestyle:** The G213 gaming keyboard has five individually programmable lighting zones. Use the color selection wheel to select a stock color or customize your own. Then, click on the zone you want to apply the color to. You can choose to disable lighting for one or more zones. Select the black color on the bottom right of the stock color list, and click on the zone for which you wish to disable lighting.



- **Effects:** Activate one of four different custom lighting effects:



- **Fixed Color** — Use the color selection wheel to choose a color or create your own custom color.

- **Breathing** — Select this option to activate a pulsating effect that simulates breathing. You can also configure the breathing effect rate. Click and drag the slider to the right to increase the rate of the breathing effect. Drag the slider to the left to decrease the rate.
- **Color Cycle** — Set the speed for how quickly the colors cycle on the keyboard.
- **Color Wave** — Select this option to set the colors to change horizontally, vertically, from the center out, or outside in. Use the slider to set the speed at which the colors cycle.

Per Profile Backlighting

The lighting customization options universally affect the G213 gaming keyboard by default. However, you can also configure lighting settings to be set on a per game profile basis.

To enable per profile backlighting:

1. Click on the double left arrows in the top-right corner of the LGS window.



2. Check the box to **Enable per profile backlighting**. A list of active LGS game profiles will appear below the checkbox.



NOTE: The Default Profile is selected by default.

3. Select a game from the list to begin configuring lighting settings for that game's profile. Click **Scan for New Games** to search your computer for recently installed games that may have associated game profiles in LGS.