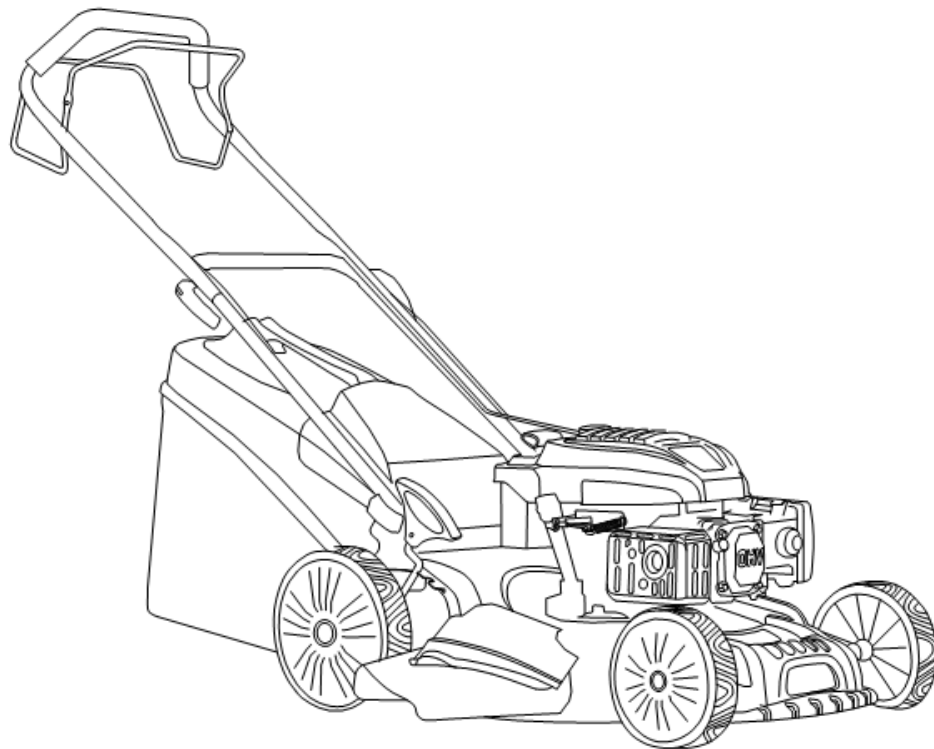




# **P1PE - PETROL LAWN MOWER**

## **Models P4100P, P4600SP, P5100SPE**



## **Owners Manual**

**P1PE - Position One Power Equipment**  
**Issac Way, Pembroke Dock, Pembrokeshire, SA72 4RW**  
**[www.p1pe.co.uk](http://www.p1pe.co.uk)**

# **IMPORTANT: PLEASE READ THE ENGINE MANUAL BEFORE FIRST USE OF YOUR LAWN MOWER**

## **CONTENTS:**

<b>INTRODUCTION:</b>	<b>3</b>
<b>SAFETY INFORMATION:</b>	<b>4</b>
<b>KNOW YOUR LAWNMOWER:</b>	<b>9</b>
<b>GRASS CATCHER/DEFLECTOR ASSEMBLY:</b>	<b>10</b>
<b>HANDLE ASSEMBLY:</b>	<b>10</b>
<b>ADJUSTMENT OF CUTTING HEIGHT:</b>	<b>11</b>
<b>PRECAUTIONS:</b>	<b>12</b>
<b>OPERATION:</b>	<b>12</b>
<b>4 IN 1 FEATURE:</b>	<b>15</b>
<b>GEAR BOX MAINTENANCE:</b>	<b>17</b>
<b>STORAGE</b>	<b>19</b>
<b>MAINTENANCE:</b>	<b>20</b>
<b>TROUBLESHOOTING:</b>	<b>22</b>
<b>DECLARATIONS OF CONFORMITY:</b>	<b>24</b>
<b>PRODUCT RECYCLING:</b>	<b>25</b>
<b>WARRANTY:</b>	<b>26</b>
<b>SPECIFICATIONS:</b>	<b>27</b>

**INTRODUCTION:**

Thank you for purchasing a P1PE Lawnmower. This Lawnmower will give you many years of safe and reliable service if operated in accordance with these instructions. Please read and understand this owner's manual before using your lawnmower, failure to do so could result in personal injury or damage to the lawnmower.

**NEVER TIP THE LAWNMOWER FORWARDS OR ON TO ITS SIDE, THIS WILL FLOOD THE CYLINDER AND AIR FILTER WITH OIL.** To access the underside, lift the front wheels by lowering the handle until it rests on the ground. Only do this when the engine is stopped.

**[www.p1pe.co.uk](http://www.p1pe.co.uk)**

## SAFETY INFORMATION:

The operator of the machine is responsible for, and has a duty of care in making sure that the machine is operated safely and in accordance with the instructions in this user manual. Keep the manual safe and pass it on if the machine is loaned or sold to another user.

*Please note the following safety points.*

- A) The machine should never be left in a condition which would allow an untrained or unauthorised person/s to operate this machine.
- B) All due care and diligence should be taken by the operator for the safety of, and with regard to, those around whilst using the machine.
- C) Some or all of the following - warning signs, symbols and/or PPE pictograms may appear throughout this manual. You **MUST** adhere to their warning/s. Failure to do so may result in personal injury to yourself or those around you.

### **DANGER**

Indicates a hazard, which, if not avoided, could result in serious injury or death.

### **WARNING**

Indicates a hazard, which, if not avoided, could result in serious injury.

### **CAUTION**

Indicates a hazard which, if not avoided, might result in minor or moderate injury.

### **NOTE**

Indicates a situation that could easily result in equipment damage.



**READ** and keep the manual safe and pass it on if the machine is loaned or sold to another user. You **MUST** fully read instructions to make sure you use and operate machine safely.

Appropriate Personal Protective Equipment (PPE), **MUST** be worn at all times when machine is in use or being repaired.



## Carbon Monoxide

Carbon monoxide is a colourless and odourless gas. Inhaling this gas can cause death as well as serious long term health problems such as brain damage.

The symptoms of carbon monoxide poisoning can include but are not limited to the following; Headaches, dizziness, nausea, breathlessness, collapsing or loss of consciousness.

Carbon monoxide poisoning symptoms are similar to flu, food poisoning, viral infections and simply tiredness. It is quite common for people to mistake this very dangerous poisoning for something else.

To avoid carbon monoxide poisoning **DO NOT** use Petrol/Diesel- powered equipment inside any of the following; Home, garage, tent, camper van, mobile home, caravan or boat.

This list is not exhaustive and if you are in any doubt contact your dealer.

If you think you have or someone around you has been affected by carbon monoxide poisoning;

Get them fresh air immediately, by leaving the affected area or by opening doors and windows. If safe and practical to do so make sure that the machine is turned off. **DO NOT** enter a room you suspect of having carbon monoxide present – instead call the emergency services.

Contact a doctor immediately or go to hospital - let them know that you suspect carbon monoxide poisoning.

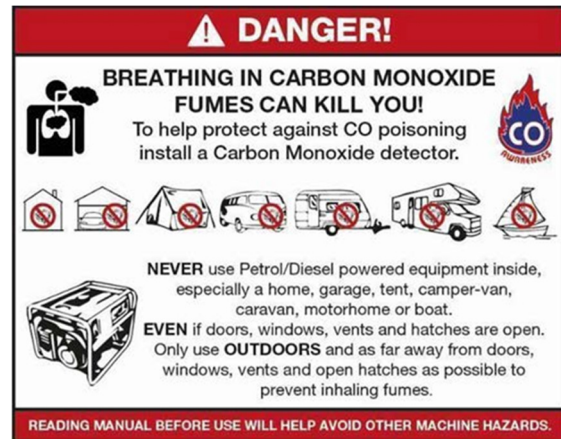
**DO NOT** use in an enclosed area or a moving vehicle.

General fuel safety (*where applicable*).

### CAUTION

#### ALL FUELS ARE FLAMMABLE

Fire hazard - keep fuel away from all sources of ignition for example heaters, lamps, sparks from grinding or welding.





**Fire Hazard**

**DO NOT** carry out hot work on tanks that have contained fuel it is extremely dangerous.

**ALWAYS** keep work area clean and tidy.

**ALWAYS** clean up all spills promptly using correct methods i.e. absorbent granules and a lidded bin.

**ALWAYS** dispose of waste fuels correctly.

Fuelling/De-fuelling (where applicable).



**CAUTION**

**ALL FUELS ARE FLAMMABLE**

**ALWAYS** fuel and defuel in a well-ventilated area outside of buildings.

**ALWAYS** wear correct, suitable and fit for purpose Personal Protective Equipment (PPE), suggested items are but not limited to safety gloves and overalls.



When fuelling/de-fuelling **ALWAYS** avoid inhaling fumes

When de-fuelling **ALWAYS** use a propriety fuel retriever.

**ALWAYS** carry fuel in the correct and clearly marked container.



**Fire Hazard**

Electrical safety (*where applicable*).



**Risk of  
electric shock**

Electricity can kill - **NEVER** work on **LIVE/ENERGISED** equipment.

Prior to carrying out any maintenance work you **MUST** Identify electrical isolation methods and isolate all electrical supplies,

Prior to use and with all electrical supplies isolated You **MUST** check all electrical cables, plugs and connections for the following;

Are intact and have no signs of damage, to include but not limited to bare wires, chaffing, cuts and loose wiring.

If there are any signs of damage, the damaged item **MUST** be taken out of service until the damage has been repaired by an electrically competent person.

All trailing cables should be routed so as not to cause any kind of trip hazard.

**NEVER** work on or near electricity with wet hands, wet clothing, and wet gloves.

Batteries (where present).



Corrosive

Batteries present a risk if they become damaged by the possible leaking of electrolyte. This electrolyte is an acid and can cause serious burn injuries. Care should be taken when working on or near them.

**NOTE** the electrolyte may be in liquid or gel form.

Should you come into contact with electrolyte you should;

Remove all clothing contaminated with electrolyte. If you cannot remove then saturate in water.

Get medical assistance as soon as possible. You must advise the medical staff of the type acid.

Lead/acid battery = dilute sulphuric acid

Nickel/cadmium = potassium hydroxide alkali electrolyte.

Use fresh running water to wash off excess electrolyte, continue this until medical assistance arrives.

Make sure that you do not wash the electrolyte to another part of the face or body.

If electrolyte comes into contact with Eyes the electrolyte needs to be immediately washed away with large amounts of water. Make sure that you do not wash the electrolyte to another part of the face or body.

Gasses from charging batteries are highly flammable and great care should be taken to charge in well ventilated areas.

There is an explosion risk if the battery terminals are short circuited, when connecting/dis-connecting **ALWAYS** exercise great care so that the terminals or battery leads are **NOT** allowed to touch and cause a spark. **ALWAYS** use suitable insulated tools.



### **Vibrations** (*where applicable*).

Prolonged use of hand held (operated) machines will cause the user to feel the effects of/from vibrations. These vibrations can lead to white finger (Raynaud's phenomenon) or carpal tunnel syndrome. This condition reduces the ability of the hand to feel and regulate temperature, causing numbness and heat sensations and may cause nerve damage and circulatory tissue death.

Not all factors that lead to white finger disease are known, but cold weather, smoking and other diseases that affect blood vessels and blood circulation as well as large and long-lasting impact of shocks are considered factors in the formation of white finger. Note the following to reduce the risk the white finger and carpal tunnel syndrome:

Wear gloves and keep your hands warm

Take regular breaks

All of the above precautions may help reduce the risk of white finger disease but not rule out carpal tunnel syndrome. Long-term and regular users are therefore recommended to observe the condition of your hands and fingers. Seek medical attention immediately if any of the above symptoms should occur.

### **Noise** (*where applicable*).

The operating noise of the machine can damage your hearing. Wear hearing protection such as earplugs or ear defenders to protect your hearing. Long-term and regular users are advised to have hearing checked regularly. Be especially vigilant and cautious when wearing hearing protection because your ability to hear alarm warnings will be reduced.

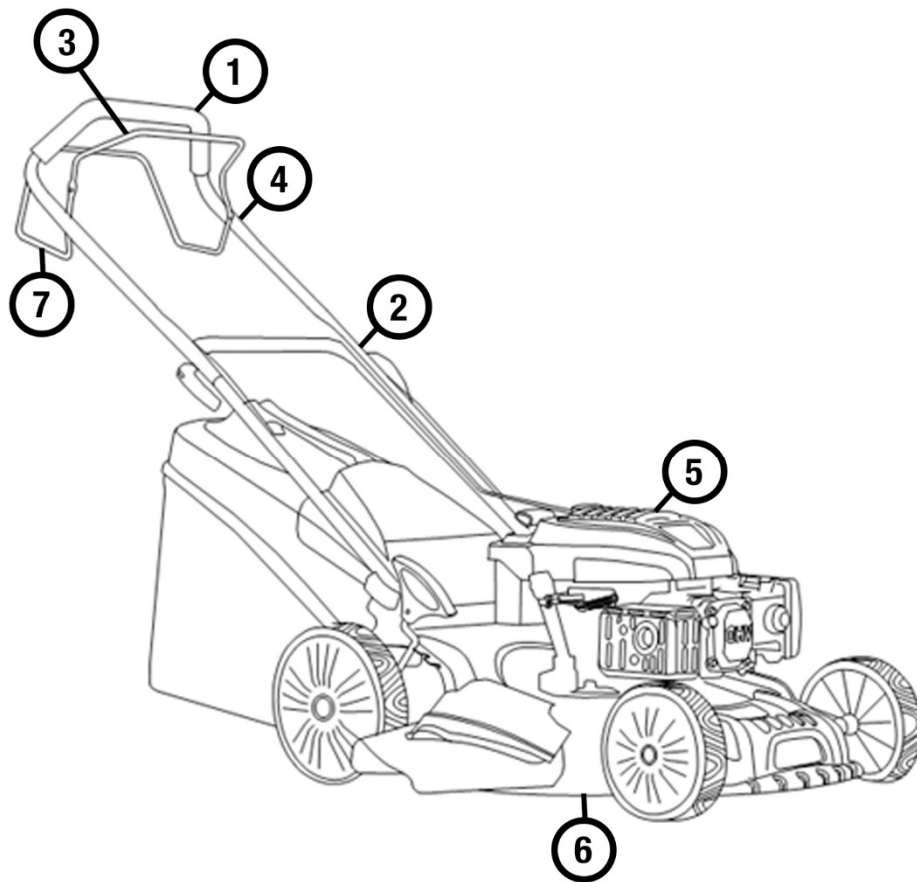
Noise emissions for this equipment is unavoidable. Carry out noisy work at approved times and for certain periods. Limit the working time to a minimum. For your personal protection and protection of people working nearby it is also advisable for them to wear hearing protection.

See **CERTIFICATE of CONFORMITY** section for outdoor noise declaration of conformity.



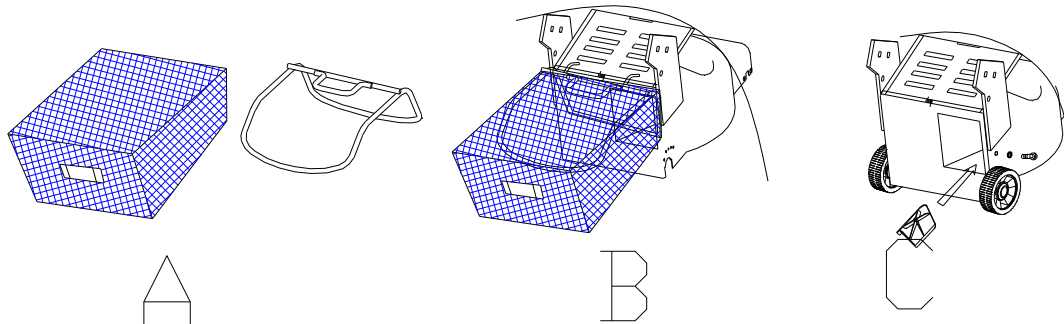
**KNOW YOUR LAWN MOWER:**

- 1) Upper Handle
- 2) Lower Handle
- 3) Engine Control Bar
- 4) Throttle Control
- 5) Engine
- 6) Deck
- 7) Self-propelled Drive Control Bar (*Only Available On P4600SP & P5100SPE*)



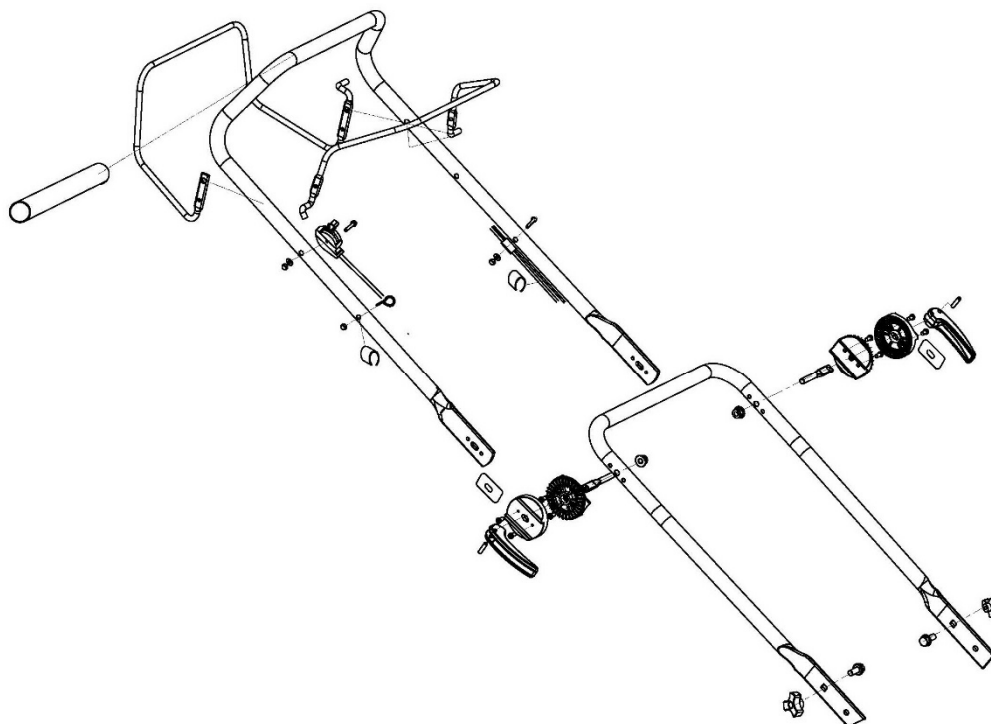
### ASSEMBLY OF GRASS CATCHER:

- A) Insert the grass catcher frame inside the grass catcher bag.
- B) Hitch the grass catcher bag onto the rear of the lawnmower.
- C) Pull up the deflector and place the grass catcher bag into place.



### ASSEMBLY OF THE HANDLE:

- A) Attach the lower handle to the handle brackets and the upper handle to the lower handle, making sure that all cables run smoothly and do not snag when the handles are folded.
- B) Attach the recoil start cord bracket onto the right hand side of the upper handle.
- C) Secure the cables with the plastic collars.
- D) Slip the recoil cord through the recoil cord bracket on upper right handle.



#### **CUTTING HEIGHT ADJUSTMENT:**

- A) The cutting height adjuster is located above the rear right wheel.  
Apply outward pressure to disengage the lever from the rack. Move lever forward or back to adjust the height.

#### **HANDLE HEIGHT ADJUSTMENT:**

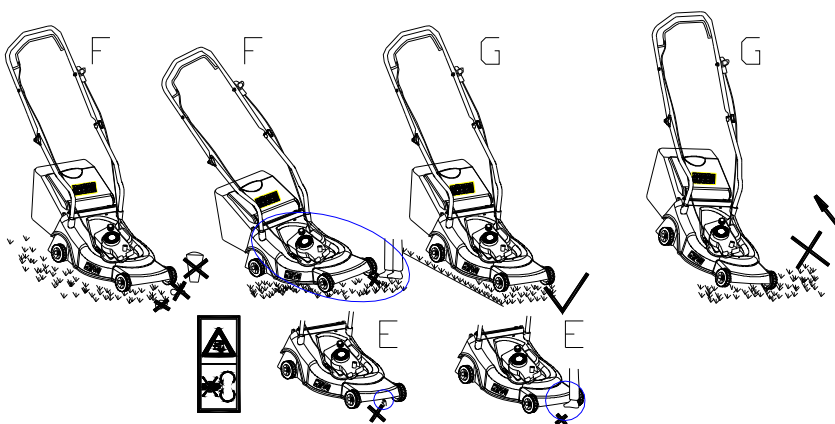
- A) Pull the locking levers open on both sides of the handle.
- B) Adjust the angle of the handle by raising or lowering as required. The angle can be adjusted in 20° increments.
- C) Push the locking lever closed to securely connect the lower handle to the upper handle.

#### **STARTER HANDLE:**

- A) Move the starter handle from the engine to the rope guide.

## PRECAUTIONS:

- A) Always use the lawnmower with the grass catcher and/or deflector in position.
- B) Always stop the engine before emptying the grass catcher or changing the cutting height.
- C) Never place your hands or feet under the lawnmower or grass ejection area whilst the engine is running.
- D) Remove all hazardous objects from the lawn which could be thrown up by the lawnmower before mowing.
- E) Keep children, animals and bystanders away when the lawnmower is in operation.
- F) Never lift or tilt the lawn mower while starting the engine.



## OPERATION: OUTDOOR USE ONLY

- A) Before using the lawnmower for the first time read the engine manual supplied with your lawnmower (NOTE: Lawnmower is delivered without oil, add 0.4 litres (99cc engine) or 0.6 litres (139 & 173cc engines) of SAE10w30 or 15w40 engine oil before starting the lawnmower – **DO NOT OVERFILL**).

## STARTING PROCEDURE:

Once the lawnmower has been assembled start the engine as follows:

Fill engine with SAE10w30 or 15w40 engine oil, do not overfill.

Fill the fuel tank with straight, fresh **UNLEADED** petrol, only use clean, fresh petrol – stale petrol may have a lower combustible value and contain deposits that will clog the carburettor, causing the engine not to start. The petrol level should be below the bottom of the fuel tank neck.

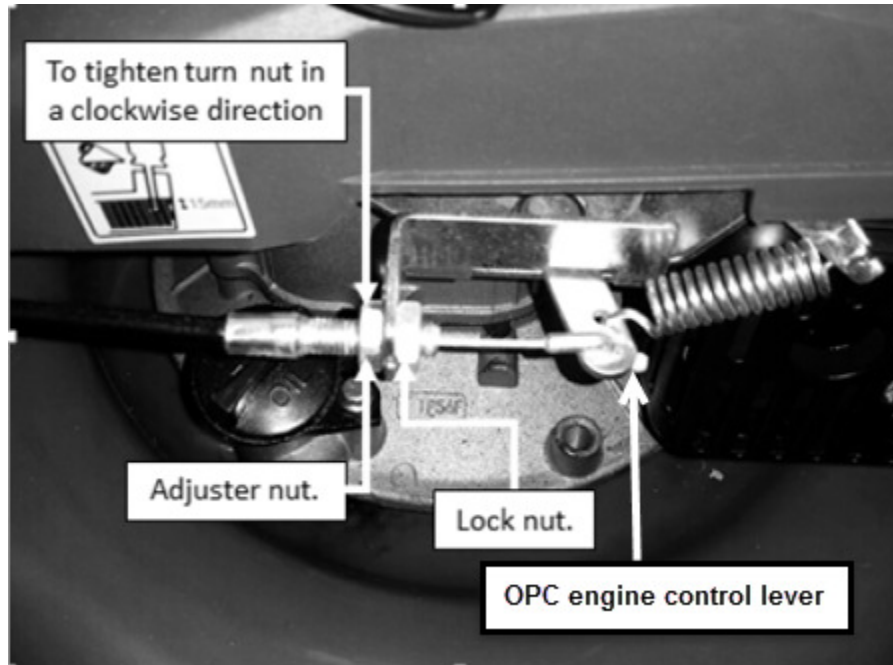
Ensure that the spark plug lead is securely connected to the spark plug.

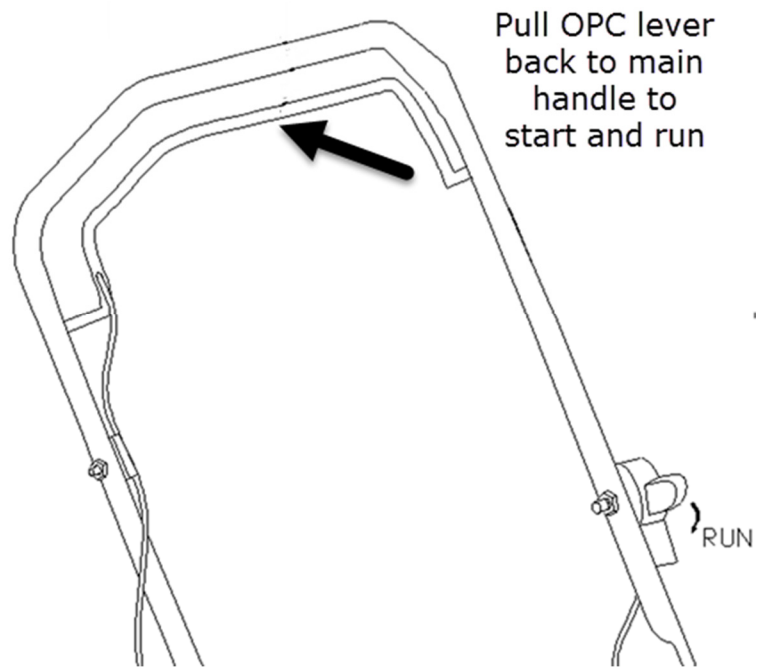
- A) Push the throttle lever all the way forward to the start position or choke  $\text{H}$  position.
- B) Pull and hold the operators presence control (OPC) lever against the handle to disengage the engine brake. **THE ENGINE WILL NOT START, OR CONTINUE TO RUN, UNLESS THE OPC LEVER IS HELD AGAINST THE HANDLE.**
- C) Pump the primer bulb 5 times when cold and 1-2 times when hot.
- D) Pull the starter cord with a strong smooth pull, do not remove the pull cord from the guide.
- E) As soon as the engine starts, move the throttle lever to **RUN** position  $\text{H}$  symbol from the choke/start position  $\text{H}$ .

**NOTE:** Using the choke is usually unnecessary when starting a warm engine. However in cool weather it may still be necessary to use the choke to start the engine. If the engine is fitted with a primer bulb, pump it 5 times when cold and 1-2 times when hot.

**WARNING:** The blade will rotate as soon as the engine is started, hold the OPC handle into the working position. The engine will stop as soon as you release the engine OPC lever. If starting the lawnmower in long grass, lift the cutting height to the highest position to avoid drag from the long grass and the rotating blade during start up.

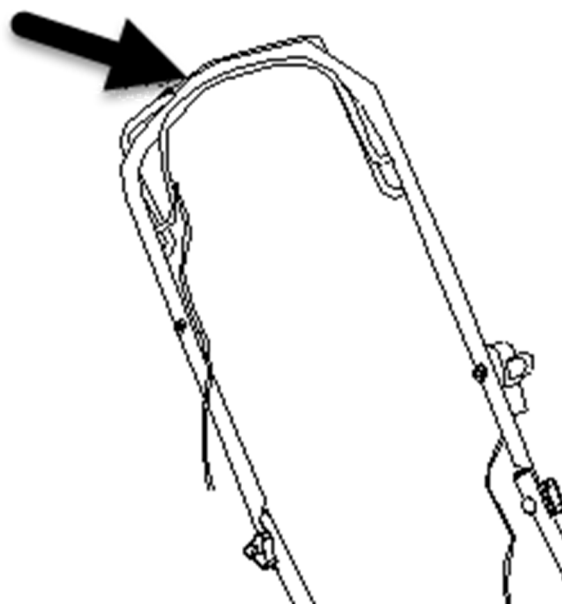
**NOTE:** Before first use, check and if necessary adjust the OPC (Operator Presence Control or engine cut out lever) control cable, if it is too loose the lawnmower will not start. To locate the adjuster follow the cable from the OPC handle to the engine body where you will see the OPC adjuster. If the OPC cable is too loose you will need to tighten it, when the OPC lever is pulled towards the main handle, the OPC engine control lever (see diagram below) should start to move. If the engine control lever does not move until the OPC lever is halfway towards the main handle it will need to be adjusted.





**SELF PROPELLED FUNCTION:** *(Models May Vary)*

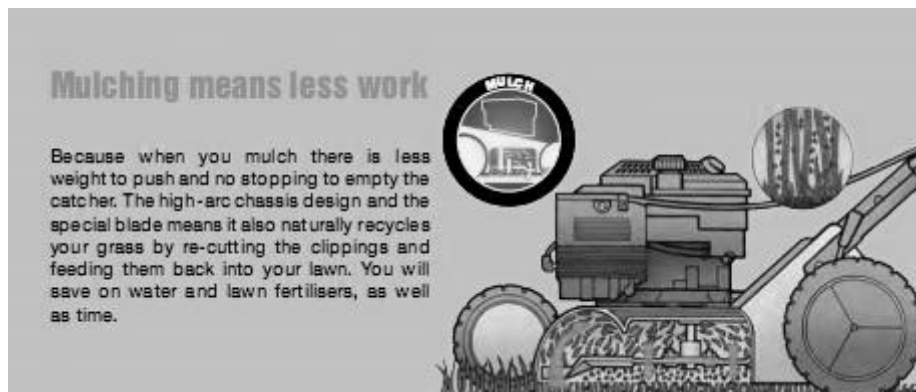
- A) To engage the self-propelled function push the rear lever forward towards the main upper handle. (**NOTE:** self-propelled function is featured on P4600SP & P5100SPE Models).



## 4 IN 1: OVERVIEW - MULCHING, SIDE-DISCHARGE & REAR DISCHARGE:

### MULCHING:

Mulching lawn mowers recycle grass clippings by finely cutting and re-cutting the grass concealing cuttings within the standing grass to wilt and decompose thereby feeding the soil.



### TIPS FOR MULCH MOWING

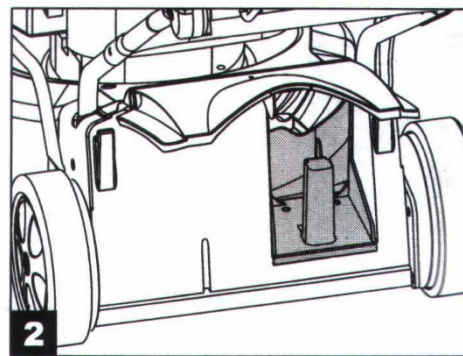
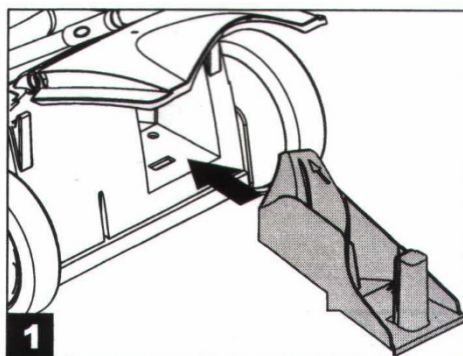
- A) Cut your lawn regularly. Ideally, for example, where the grass height is 6cm only cut 2cm off.
- B) Ensure the lawnmower blade is sharp.
- C) Do not mulch wet grass.
- D) Set engine speed to MAX.
- E) Only push lawnmower at walking pace.
- F) Regularly clean mulching wedge, inner side housing and lawnmower blade.

### FITTING THE MULCHING PLUG:

**NOTE:** ONLY FIT WHEN ENGINE IS SWITCH OFF.

**WARNING:** ONLY FIT WHEN THE ENGINE & BLADE ARE STATIONARY.

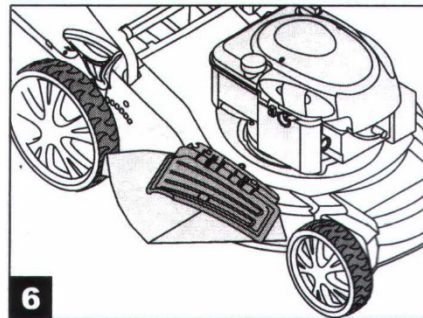
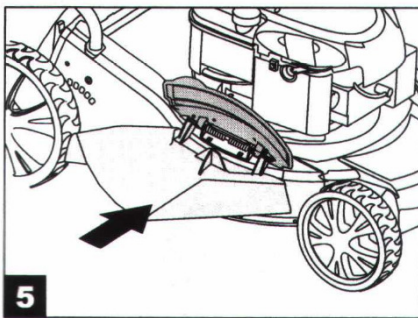
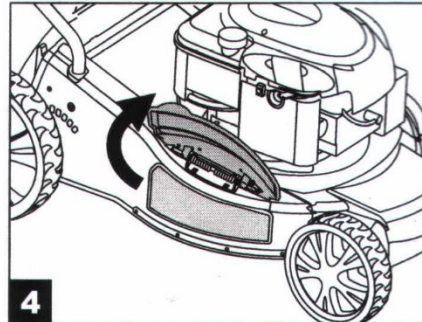
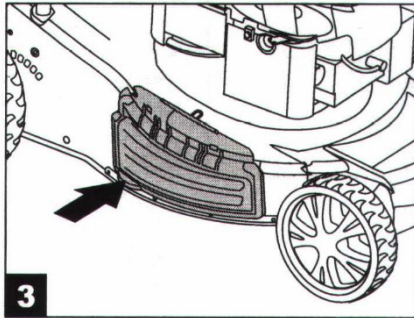
- A) Lift the rear discharge flap and remove the grass catcher.
- B) Push the mulching wedge into the discharge channel.
- C) Lock the mulching wedge with the housing nose to the bottom side of the mulching wedge grip, the mulching wedge grip must snap into the opening of the housing (*see pictures 1 & 2*)
- D) Lower the discharge flap.



## SIDE-DISCHARGE:

**NOTE: ONLY RESET WITH A TURNED OFF AND STATIONARY LAWNMOWER & ENGINE**

- A) Lift the rear discharge flap and remove the grass catcher box.
- B) Mount the mulching wedge (see *mulching*).
- C) Lift side flap for side discharge (see *pictures 3 & 4*).
- D) Mount the discharge channel for side discharge on the support pin of the rear flap (see *picture 5*).
- E) Lower the rear flap, the rear flap lies on the discharge channel (see *picture 6*).



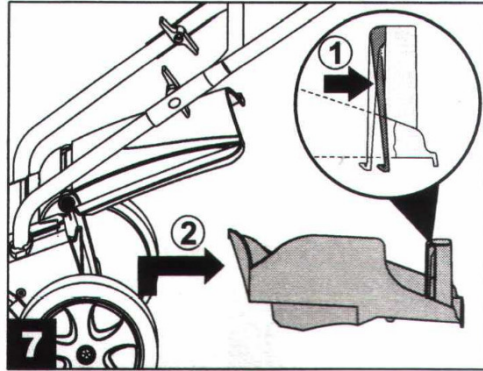
## MOWING WITH THE GRASS CATCHER:

- A) For mowing with the grass catcher box, remove the mulching plug and mount the grass catching box under the rear discharge flap.

## REMOVING THE MULCHING PLUG:

**NOTE: ONLY FIT WITH THE LAWNMOWER & ENGINE TURNED OFF AND STATIONARY.**

- A) Lift the discharge flap and remove the mulching plug by unlocking the clip located on the handle and remove (see *picture 7*)



#### **FOR SIDE DISCHARGE:**

**NOTE: ONLY FIT WHEN LAWNMOWER & ENGINE IS TURNED OFF AND STATIONARY.**

- A) Lift rear discharge flap and fit mulching plug.
- B) Lift side discharge cover and fit side discharge chute.

#### **GEAR BOX MAINTENANCE:**

- A) Check and adjust the drive belt when required. It is important that the drive belt is tensioned correctly. A loose drive belt will slip and cause excessive wear to the belt and lost drive to the rear wheels.
- B) Annually, grease the gears located within the wheels and ensure the wheel bearings are free from corrosion and moisture.

#### **GENERAL CONDITIONS OF USE:**

- 1) This petrol lawnmower is to be used for cutting natural grass, never use the lawnmower for any other purposes. Any other use can put your safety at risk and damage to lawnmower.
- 2) Persons under the age of 16 and not familiar with the user instructions must not use this lawnmower.
- 3) The user is responsible for the safety of others within the working area. Keep children and domestic animals at a safe distance (at least 15m away) while the mower is in use.
- 4) Before mowing, remove all objects from the lawn which may be thrown by the machine, stay alert for any foreign objects which may have been missed. The blade rotates at 2800rpm, if a stone or any foreign object is contacted by the blade, it can be thrown out of the cutting area at very high speed, causing injury or damage. Please ensure the lawn is checked before mowing for any stones or foreign objects. Also wear heavy duty safety foot wear and thick trousers to minimise injury from flying objects.

#### **USING INSTRUCTIONS:**

- 1) Check that all nuts, bolts and screws are tight.
- 2) Before mowing place the grass catcher bag in position.

- 3) Before mowing make sure that the blade and blade fixing screw are securely fastened. When blade requires sharpening this must be done evenly on both sides of the blade to prevent any imbalance. If the blade is damaged it must be replaced.
- 4) When mowing always wear long trousers and strong safety footwear.
- 5) Do not start the engine in an enclosed and/or poorly ventilated area, fumes from the engine contain carbon monoxide and can kill in minutes.
- 6) Only operate the lawnmower when there is sufficient light.
- 7) Do not use the lawnmower when raining or when the grass is wet.
- 8) Never mow up or down slopes, always mow across the face of the slope.
- 9) Always turn off the engine if you leave the lawnmower unattended, displace the lawnmower or incline it.
- 10) Never lift the rear of the mower while starting the engine.
- 11) Never place your hands and feet underneath the deck or into the rear or side discharge chutes when the engine is running.
- 12) Never change the rated speed of the engine. This is set at 2800rpm by the factory.
- 13) Release the self-propelled lever before starting the engine (*P4600SP & P5100SPE only*).
- 14) Stop the engine and remove the spark plug cap if undertaking maintenance in the following cases:
  - A) Before undertaking any operation under the deck or rear discharge chute.
  - B) Before any maintenance, repairing or checking operations.
  - C) Before carrying, lifting or removing the mower.
  - D) If you leave the mower unattended
  - F) To remove and emptying the grass catcher
  - G) After hitting an object, stop the engine and check the mower over for damage, bring the mower to an approved service centre to repair if necessary.
  - H) If the mower vibrates in an abnormal way, find the reasons why and take to an approved service centre
  - I) Check regularly that the bolts, nuts and screws are securely tightened for safe use of the mower.

**WARNING: AFTER YOU STOP THE ENGINE THE BLADE IS STILL IN MOTION FOR A SHORT PERIOD OF TIME.**

**WARNING: PETROL IS HIGHLY FLAMIBLE**

- 1) Keep petrol in a jerry can especially designed for this purpose.
- 2) Fill up the fuel tank with a funnel.
- 3) Fill up the fuel tank outside.
- 4) Do not smoke.
- 5) Do not use a mobile phone.
- 6) Fill up with petrol and oil before starting the engine.
- 7) Never open the fuel cap and /or fuel whilst the engine is running or still hot.
- 8) Do not start the engine if fuel has been spilt.

**WARNING: STOP THE ENGINE & UNPLUG THE SPARK PLUG BEFORE ANY REPAIRS OR MAINTENANCE**

- 1) Make sure all nuts, bolts and screws are kept well tightened to keep the lawnmower in a safe operating condition.
- 2) Never store the lawnmower over winter with petrol still in the tank.
- 3) Allow the engine to cool down before storage.
- 4) To reduce the risk of fire clean the lawnmower in particular the engine, muffler and fuel tank.
- 5) Remove all traces of grass, leaves or excess grease.
- 6) Check frequently the condition of the deflector and the grass catcher, replace them if damaged.
- 7) Wear protective gloves for the mounting and sharpening of the blade. Always ensure the blade is balanced.

**STORAGE:**

The following steps should be taken to prepare the lawn mower for storage at the end of the mowing season.

- 1) Remove the fuel from the tank and carburettor by running the engine until it stops.
  - a) Start the engine and let it run until it has used up all remaining petrol and stalls.
  - b) Remove the spark plug. Pour approx. 20 ml of SAE10w30 or 15w40 engine oil into the combustion chamber.
- 2) Pull the starter cord to evenly distribute the oil in the combustion chamber. Replace the spark plug.
- 3) Clean and grease the lawnmower carefully.
- 4) Oil the blade and under deck area with WD40 type oil to prevent corrosion.
- 5) Store the lawnmower in a dry, clean and frost-protected place

**CAUTION:** The engine must have completely cooled down before storing the lawnmower.

**NOTE:** When storing any type of power equipment in an unventilated or material storage shed, Care should be taken to rust-proof the equipment. Using a light oil (WD40 type), coat the equipment, especially cables and all moving parts.

Be careful not to bend or kink cables when folding the handles.

If the starter rope becomes disconnected from rope guide on the handle, pull the starter rope out from the engine slowly, with the OPC lever released, to prevent the engine from accidentally starting.

Slip the starter rope into the rope guide on the handle.

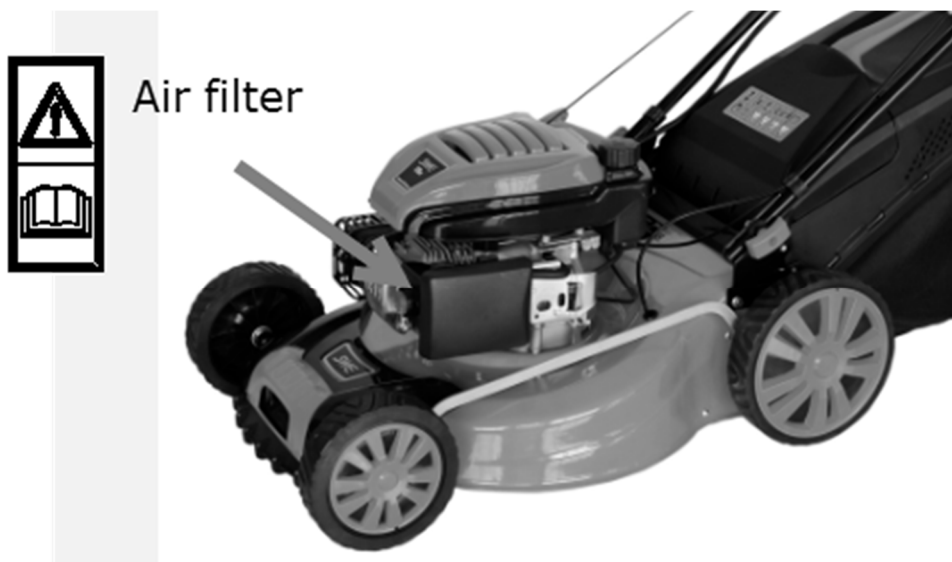
When transporting, engine must be off. Take care not to bend or damage the blade when pushing the lawnmower over obstacles.

## MAINTENANCE:

### **WARNING: STOP THE ENGINE & UNPLUG THE SPARK PLUG BEFORE ANY REPAIRS OR MAINTENANCE**

- 1) Carefully read the engine manual for four stroke lawnmowers.
- 2) Check the oil level regularly and add/replace oil if necessary.
- 3) Remove grass and dirt deposits from beneath the deck.
- 4) Oil the wheel bearings and grease the rear drive cogs inside rear wheels annually.
- 5) Check the blade before use, the blade should always be sharp and balanced.
- 6) Ensure all bolts and screws are tight, loose bolts and screws can damage the engine and frame while in operation.
- 7) Regularly service your lawnmower for long life.
- 8) Only use original spark plug, for best results replace the spark plug every 100 hours of use.
- 9) Do not allow dirt or dust to clog the air filter foam element, the engine air cleaner element must be cleaned after 25 hours of normal lawn mowing. The foam element must be serviced regularly if the mower is used in dry dusty conditions.

### TO CLEAN THE AIR FILTER:



- 1) Remove the filter cover.
- 2) Wash foam filter element in soap and water. **DO NOT USE PETROL!**
- 3) Air dry the filter element.
- 4) Place a few drops of SAE10w30 or 15w40 engine oil on the foam filter and squeeze tightly to remove any excess oil.
- 5) Reinstall the filter.

**NOTE:** Replace the filter if frayed, torn, damaged or unable to be cleaned.

If a paper filter is fitted, blow out with an airline every 25 hours and replace every 100 hours. More often in very dusty conditions.

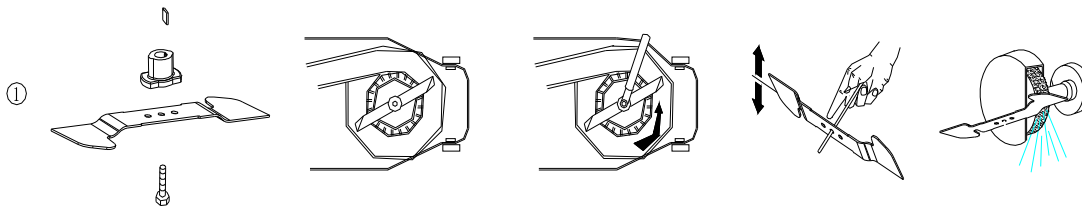
### BLADE MAINTENANCE:

- 1) Sharpen the blade every 25 hours of use.
- 2) Ensure the blade is balanced.
- 3) Only use approved replacement parts from Genpower Ltd, when replacing the blade.

**NOTE:** Periodically inspect the blade adapter for cracks, especially if you strike a foreign object, replace when necessary.

### REMOVING THE BLADE:

- A) To remove the blade, loosen the centre bolt (*see picture 1*)
- B) Check the blade support and change all parts if worn or damaged.
- C) When reassembling the blade ensure the cutting edges face the direction of the engine rotation.
- D) The blade centre bolt must be tightened to 37Nm with a torque wrench.



## **TROUBLESHOOTING:**

### **ENGINE**

Engine troubleshooting – where necessary all corrective actions should be carried out by suitably qualified persons.

If the starter rope becomes disconnected from the rope guide on handle, slowly pull the starter handle out with the OPC lever released to prevent the engine from accidentally starting and re-attach to the start guide on upper handle.

### **PROBLEM – ENGINE DOES NOT START**

- 1) Throttle lever not in the correct position for the prevailing conditions.
- 2) Fuel tank is empty.
- 3) Stale fuel in fuel tank and carburettor.
- 4) Air filter element is dirty.
- 5) Spark plug is loose.
- 6) Spark plug cap loose or disconnected from plug.
- 7) Spark plug gap is incorrect.
- 8) Carburettor/engine is flooded with fuel.
- 9) Faulty ignition module.

### **POSSIBLE SOLUTIONS: ENGINE DOES NOT START**

- 1) Move throttle lever to correct position.
- 2) Fill tank with fuel.
- 3) Drain carburettor float bowl and tank.
- 4) Clean air filter element.
- 5) Tighten spark plug to 25- 30Nm.
- 6) Make sure spark plug cap is correctly fitted onto spark plug.
- 7) Set spark plug gap to 0.7 to 0.8mm.
- 8) Remove air filter element and spark plug and wait 15 minutes until petrol flooding clears.
- 9) Contact the service dealer.

### **PROBLEM – DIFFICULT TO START OR LOSS OF POWER**

- 1) Dirt, water or stale fuel in tank and carburettor float bowl.
- 2) Vent hole in fuel tank cap is plugged.
- 3) Air filter element is dirty.

### **POSSIBLE SOLUTIONS: DIFFICULT TO START OR LOSS OF POWER**

- 1) Drain fuel from tank and carburettor float bowl.. Fill tank with clean, fresh fuel.
- 2) Clean or replace fuel tank cap.
- 3) Clean air filter element.

**PROBLEM: ENGINE OPERATES ERRACTICALLY**

- 1) Spark plug is defective.
- 2) Spark plug gap is incorrect.
- 3) Air filter element is dirty.

**POSSIBLE SOULUTIONS: ENGINE OPERATES ERRACTICALLY**

- 1) Fit new, correctly gapped plug.
- 2) Set spark plug gap to 0.7 to 0.8mm.
- 3) Clean air filter element.

**PROBLEM: ENGINE IDLES POORLY**

- 1) Air filter element is dirty.
- 2) Air slots in engine shroud are blocked.
- 3) Cooling fins and air passages under engine housing are blocked.

**POSSIBLE SOULUTIONS: ENGINE IDLES POORLY**

- 1) Clean air filter element.
- 2) Remove debris from slots.
- 3) Remove debris from cooling fins and air passages.

**PROBLEM: ENGINE SKIPS AT HIGH SPEED**

- 1) Spark plug electrode gap is incorrect.

**POSSIBLE SOULUTIONS: ENGINE SKIPS AT HIGH SPEED**

- 1) Set spark plug gap to 0.7 to 0.8mm.

**PROBLEM: ENGINE OVERHEATING**

- 1) Cooling airflow is restricted.
- 2) Incorrect spark plug.

**POSSIBLE SOULUTIONS: ENGINE OVERHEATING**

- 1) Remove any debris from slots in shroud, blower housing, air passages.
- 2) Fit new spark plug.

**PROBLEM: MOWER VIBRATES ABNORMALLY**

**DO NOT USE LAWNMOWER UNTIL VIBRATION ISSUE HAS BEEN FIXED**

- 1) Cutting assembly is loose.
- 2) Blade/Cutting assembly is unbalanced.

**POSSIBLE SOULUTIONS: MOWER VIBRATES ABNORMALLY**

- 1) Tighten blade.
- 2) Fit new blade.

**DECLARATIONS OF CONFORMITY:**

Genpower Ltd confirms that these P1PE products conform to the following CE Directives;

2006/42/EC Machinery Directive

2004/108/EC EMC Directive

2000/14/EC, Amended by 2005/88/EC Noise Emissions Directive

97/68/EC\_2010/26/EC NRMM Emissions Directive

## PRODUCT RECYCLING:

We do not offer a takeback scheme for the recovery of Waste Electrical Electronic Equipment (WEEE) & Batteries instead the responsibility to dispose of WEEE and or Batteries is passed onto you by us. So when it becomes necessary to dispose of your machine you must take it to your local Civic Amenity Site. For further information please contact your Local Authority for disposal advice.

You MUST make sure that all unused oil and fuel is disposed of correctly either beforehand or at your local Civic Amenity Site. Under NO circumstance must any oil and fuel be put down any drains.

Waste Electrical Electronic Equipment (WEEE) recycling.

Certain products contain WEEE waste which should not be disposed of in your domestic waste.



You MUST recycle WEEE in accordance with your local authority or recycling centre.

Battery recycling, certain products contain batteries which should not be disposed of in your domestic waste.



You MUST recycle batteries in accordance with your local authority or recycling centre.

Unwanted packaging materials should be sorted and taken to a recycling centre so it can be disposed of in a manner which is compatible with the environment.

The following symbol means that you should 'Reduce – Reuse – Recycle'.

Should your lawnmower need replacing after extended use do not put it in the domestic waste but dispose of it in an environmentally safe way.



We are a Member of the VALPAK National Compliance scheme and our registration number is **RM08660**

For further information about disposal please contact your Local Authority.

You can also get more advice and guidance about recycling at the following website

<http://www.recycle-more.co.uk>

Should you pass this product onto another user either sold or loaned you MUST pass on this user manual. This will make sure that all other users can use and maintain the machine safely.



## **MANUAL REVISIONS:**

Our manuals are constantly being reviewed and updated. Should you find an error, omission or something you find unclear please contact your dealer for assistance. E&OE.

Our latest manuals are also placed online at [www.p1pe.co.uk](http://www.p1pe.co.uk)

We reserve the right to make any modifications without prior notice whenever necessary.

## **WARRANTY:**

All P1 Power Equipment (P1PE) Lawnmowers come with 3 year domestic use warranty from the date of purchase. The first year is parts and labour, the second and third years are parts only.

To qualify for second & third year warranty please register your lawnmower online at [www.p1pe.co.uk](http://www.p1pe.co.uk) within 30 days of purchase.

## **THE WARRANTY DOES NOT COVER**

*General wear and tear.*

*Insufficient maintenance.*

*Misuse or impact damage.*

*Miss-assembly, adjustment and preparation of the machine.*

*Service and wearing items, but not limited to: (belt, blade, blade support, bearings, cables, deflectors, spark plug, air filter, fuel pipes, springs, wheels, recoil start assemblies, spark plugs, etc...)*

*Freight and packing cost.*

P1PE will refuse any responsibility if the machine was not used for the purpose it was made for or if the operator did not use the machine as described in the operation and maintenance sections of this user manual.

Read carefully the instruction manual before any use of the lawn mower.

You can register your lawnmower at [\*\*www.p1pe.co.uk\*\*](http://www.p1pe.co.uk)

For spare parts contact us on:

## **POSTAL ADDRESS**

GENPOWER LTD, Isaac Way, London Road, Pembroke Dock, Pembrokeshire, SA72 4RW. UK

## **TELEPHONE**

+44 (0) 1646 687880

## **FAX**

+44 (0) 1646 686198

## **TECHNICAL E-MAIL**

[service@genpower.co.uk](mailto:service@genpower.co.uk)

## **WEBSITE**

[www.p1pe.co.uk](http://www.p1pe.co.uk)

**SPECIFICATION:**

	<b>P4100P</b>	<b>P4600SP</b>	<b>P5100SPE</b>
Engine Type	OHV 4-Stroke	OHV 4-Stroke	OHV 4-Stroke
Engine Size (cc)	99	139	173
Fuel Tank Capacity (L)	1.0	1.1	1.1
Fuel Type	Unleaded Petrol	Unleaded Petrol	Unleaded Petrol
Oil Capacity	0.4	0.6	0.6
Oil Type	SAE-15W-40	SAE-15W-40	SAE-15W-40
Noise Level dB(A)	96	96	98
Rated Speed (rpm)	2800rpm	2800rpm	2800rpm
Rated Power (kw)	1.4	1.9	2.6
Drive Type	Push	Self-Propelled	Self-Propelled
Start Method	Recoil	Recoil	Recoil / Electric
Height Adjustment	Central 7 position	Central 7 position	Central 7 position
Cutting Height (mm)	25-75mm	25-75mm	25-75mm
Cutting Width (mm)	410	460	508
Grass Catcher Type	Polyester	Polyester	Polyester
Grass Catcher Volume (L)	55	55	60
Deck Material	Treated Steel	Treated Steel	Treated Steel
Wheel Size – Front (mm)	150mm	150mm	200mm
Wheel Size – Rear (mm)	150mm	200mm	250mm
Assembled Dimensions - L x W x H (mm)	685 x 530 x 440	770 x 565 x 440	900 x 580 x 530
Net Weight (kg)	21.5	29	42

**N.B.** All machines are pre delivery inspected so there may be residual oil left in the machine so please fill with caution, to prevent overfilling.



**P1PE - Position One Power Equipment**  
**Issac Way, Pembroke Dock, Pembrokeshire, SA72 4RW**  
**[www.p1pe.co.uk](http://www.p1pe.co.uk)**