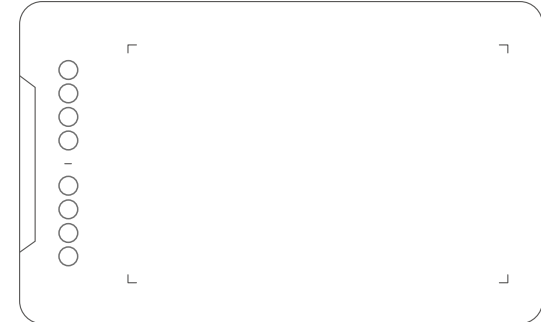




Graphic Drawing Tablet

Deco 01 Manual

Windows 10,8,7 and Vista Mac 10.8 or above



XP-PEN

Web site: www.xp-pen.com
Mail: service@xp-pen.com

Please contact us with any questions



Designed by XPPEN Technology CO. in California, Assembled in China

www.xp-pen.com

Contents

I. Product Overview	1
• Overview	1
• Active area	1
II. Stylus	2
• Overview	2
• Pen tip replacement	2
III. Driver Installation	3
• Windows	3
• Mac	3
IV. Driver Settings UI	4
• Windows	4
• Mac	8
V. Driver Uninstallation	13
• Windows	13
• Mac	13
VI. FAQ	13

Deco 01 Pro User Manual

Safety Precautions

This manual uses the following symbols to ensure that the XP-PEN Tablet is used correctly and safely. Be sure to read and observe the Safety Precautions.



Do not use this product in a control system area that requires a high degree of safety and reliability.

In such a system, this product could negatively affect other electronic devices and could malfunction due to the effect of those devices.



Turn the power off in areas where use of electronic devices is prohibited.

Turn the power off your tablet when onboard an aircraft or in any other location where use of electronic devices is prohibited, otherwise it may negatively affect other electronic devices in the area.

Unplug the USB connector from this product and turn the power off.



Keep the product away from infants and young children.

Accessories to this gadget may present a choking hazard to small children. Keep all accessories away from infants and young children.



CAUTION

Do not place this product on unstable surfaces.

Avoid placing this product on unstable, tilted surfaces or any locations exposed to excessive vibrations. This may cause the tablet to fall or impact surfaces which can result in damage and/or malfunction to the tablet.

Do not place heavy objects on top of this product.

Do not place heavy objects on the product. Do not step on, or place your body weight on this product as this may cause damage.



Avoid extreme high or low-temperature exposure to the XP-Pen tablet.

Do not store this product in areas that drop below 5°C or above 40°C. Avoid locations with excessive temperature fluctuations. This may result in damage to the product and its components.



Do not disassemble

Do not disassemble or modify this product. Doing so may expose you to heat, fire, electric shock and injury. Disassembling the product will void your warranty.



Do not use alcohol for cleaning

Never use alcohol, thinner, benzene or other mineral solvents that may discolor and cause deterioration to the product.



Do not expose to water

Be cautious of water and all liquids that may be near the tablet. Exposure to water or liquid could damage the product.



CAUTION



Avoid placing metallic objects and especially magnetic objects on the tablet.

Placing metallic and/or magnetic objects on this product during operation may cause malfunction or permanent damage.



Do not strike the pen against hard objects.

Striking the pen against hard objects can cause damage to the pen.



Avoid gripping the pen too tightly, and DO NOT use excessive weight/pressure on the Express Key button and pen.

The stylus pen is a high-precision instrument. Avoid pressing too tightly on the Express Key button, and keep any objects from covering the pen to avoid potential damage. Keep the pen away from areas of high dust, contaminants, or any particulate matter that can effect or damage the pen.

Limitation of Liability

- XP-Pen shall in no event be liable for damages resulting from fires or earthquakes, including those caused by third parties and those arising from user misuse, abuse or neglect.
- XP- Pen shall in no event be liable for incidental damages- including but not limited to loss of business income, interruption of business activities, corruption or loss of data – that arise from use or failure to use this product correctly.
- XP- Pen shall in no event be liable for damage resulting from uses not documented in this manual.
- XP- Pen shall in no event be liable for damages or malfunction arising from the connection to other devices or use of third party software.

{I. Product Overview}

Overview

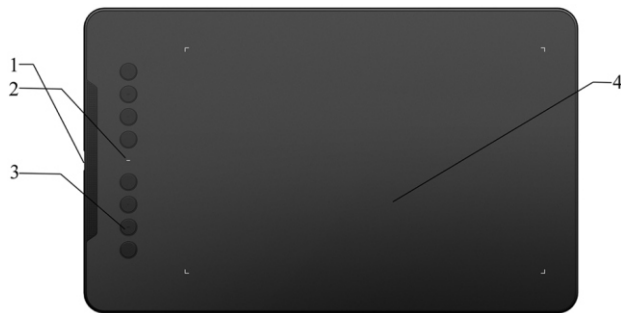


Image 1-1: Overview

- (1). USB port
- (2). Status indicator light
 - a. Blue, blinking: Stylus is in range, but not touching the work area.
 - b. Blue, solid: Stylus is touching the work area.
 - c. No light: Stylus is out of detection range.
- (3). Shortcut keys
- (4). Active area

Active area

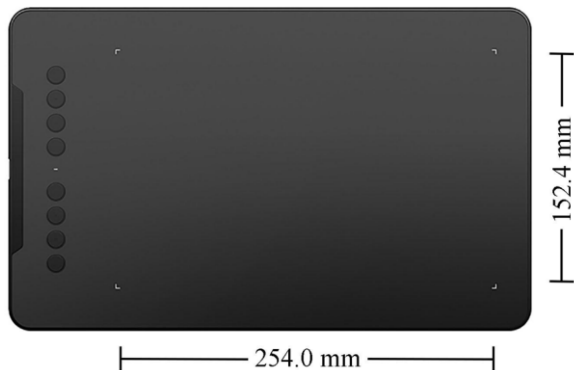


Image 1-2: Active area

{II. Stylus}

Overview

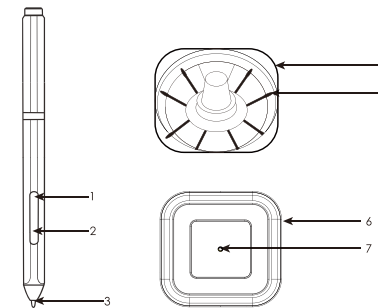


Image 2-1: Stylus and accessories

- (1) Barrel button 2
- (2) Barrel button 1
- (3) Pen tip
- (4) Pen stand (Top)
- (5) Ersatzspitzen
- (6) Stifthalter (Unterteil)
- (7) Entferner für die Stiftspitze

NOTES:

- a. Barrel button functions can be customized in the tablet's driver settings.
- b. Stylus does not use a battery or require charging.

Pen tip replacement

1. Turn your pen stand upside-down and insert the stylus tip into the hole in its center. Tilt the stylus slightly so that the tip catches on the edge of the hole, then pull the stylus and pen away from the stand to remove the pen tip.

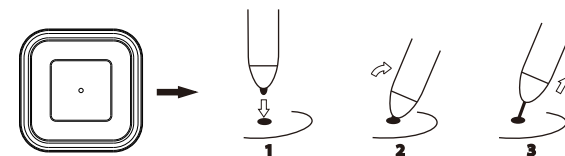


Image 2-2: Replacing the pen tip

2. Twist the pen stand's top half counterclockwise to separate it from the bottom.



Image 2-2-1: Replacing the pen tip

- Take a new pen tip from the inside of the pen stand.

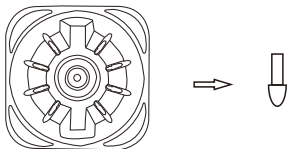


Image 2-2-2: Replacing the pen tip

- Push the new pen tip straight into the stylus.



Image 2-2-3: Replacing the pen tip

{III. Driver Installation}


Supported operating systems:

Windows 10, 8, 7, or Vista
Mac OS X 10.8 or above

NOTES :

- Disable any antivirus or firewall software and close any non-essential background software before beginning the installation. Some software, such as OneDrive and Dropbox, may monopolize important files and prevent a successful installation. On a Windows operated computer, check the system tray on the bottom-right of the screen and close any software unrelated to your computer hardware.
- Uninstall any existing tablet software before attempting to install the Deco 01 driver. Other tablet drivers will conflict with the Deco 01 driver or prevent installation entirely.
- Please download the latest driver version from the XP-Pen website (www.xp-pen.com) and be sure to extract the .zip file contents before running ".exe" or ".pkg."

Windows

- Connect the Deco 01 to your computer with the included USB cable.
- Download the Deco 01's latest driver from the support section of our website, www.xp-pen.com
- Extra the .zip file contents before running ".exe".
- After a successful installation, the driver's icon () will appear in your system tray and on your desktop. If the icon is not present, uninstall the driver, reboot, and repeat step 2.

Mac

- Connect the Deco 01 to your computer with the included USB cable.
- Download the Deco 01's latest driver from the support section of our website, www.xp-pen.com
- Extra the .zip file contents before running ".pkg".

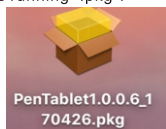



Image 3-1: Mac driver

{IV. Driver Settings UI}

Windows

The Deco 01's driver settings can be opened in two ways:
Double-click the driver's icon () in system tray or your desktop.

Driver UI

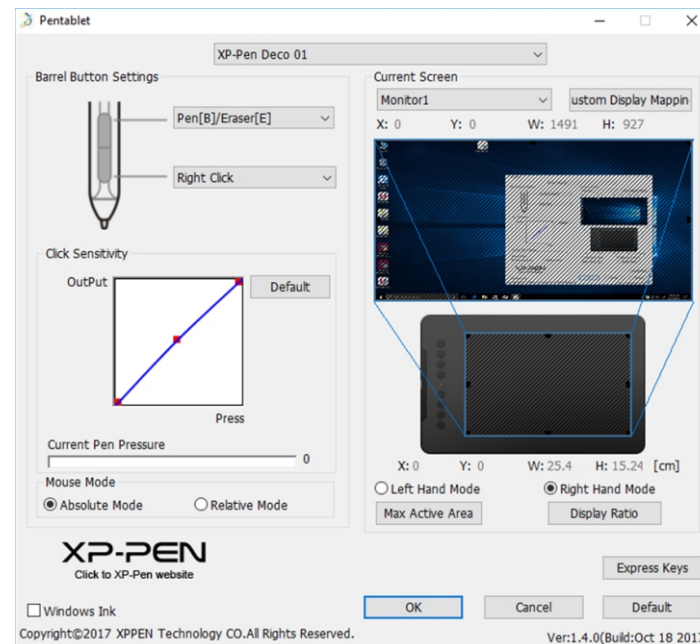


Image 4-1: UI

1.1. Pen Function Settings

You may customize the functions of your tablet pen's barrel buttons here. Use the "Function Key" option to program custom keystrokes.

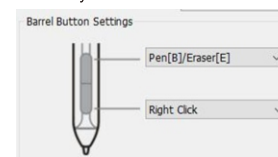


Image 4-2: Pen Functions Setting

Note:

Pen/Eraser Toggle

With the stylus in range of the Deco 01's working area, press the assigned barrel button to toggle between pen and eraser modes in compatible drawing software. The current mode will briefly be displayed on your monitor.

1.2. Click Sensitivity & Current Pen Pressure

You can adjust pen pressure to "Output" or "Press" sensitivity on here.

Current Pen Pressure shows the current pressure level being exerted on your tablet and can be used to test pen pressure.

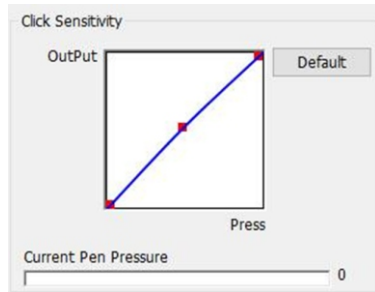


Image4-3: Click Sensitivity & Current Pen Pressure

1.3. Current Screen & Custom Display Mapping

The Deco 01 may be configured for use with single or dual monitors.

And the dimensions of your tablet's on-screen work area can be changed here.

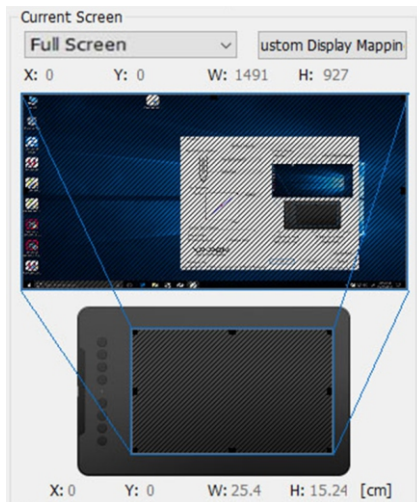


Image4-4: Full Screen

If only one monitor is selected, your tablet input will be limited to that particular monitor.

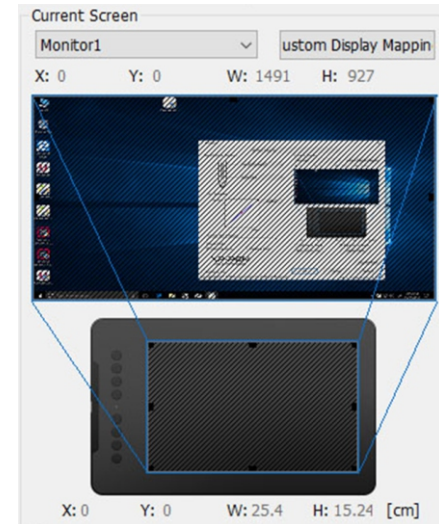


Image4-5: Monitor1

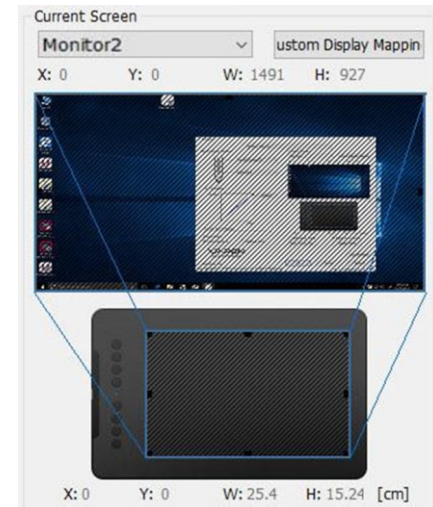


Image4-6: Monitor2

1.4. Right & Left Hand Mode

The Deco 01 is set up for right-handed use by default. When switching to left-handed mode, be sure to rotate the actual physical tablet 180 degrees to place its shortcut keys on its opposite side.

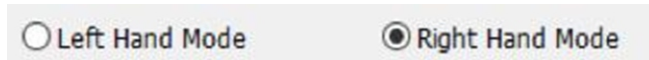


Image4-7: Left & Right Hand Modes

1.5. Max Active Area & Display Ratio

You can set your Deco 01 work area to the max or adjust the tablet's on-screen working area to match your monitor's resolution.

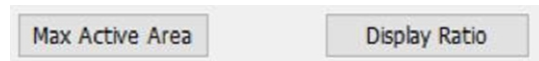


Image4-8: Max & Ratio

1.6. Mouse Mode

Absolute (Pen) Mode: Standard tablet mode; Each point of the tablet's work area corresponds to an absolute point on your computer display.
Relative (Mouse) Mode: Mouse mode; The tablet's work area does not correspond to absolute points on your computer display and your pen works as a standard mouse.

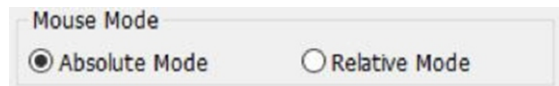


Image4-9: Mouse Mode

1.7. Windows Ink

Windows Ink capability can be toggled on and off here. Enabling this will allow support for Windows Ink and applications that run using Windows Ink.

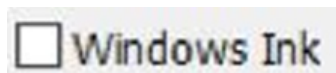


Image4-10: Windows Ink

1.8. Express keys

Use express keys to set custom keystrokes. You also can customize each express key for different software programs.
Windows Ink and applications that run using Windows Ink.

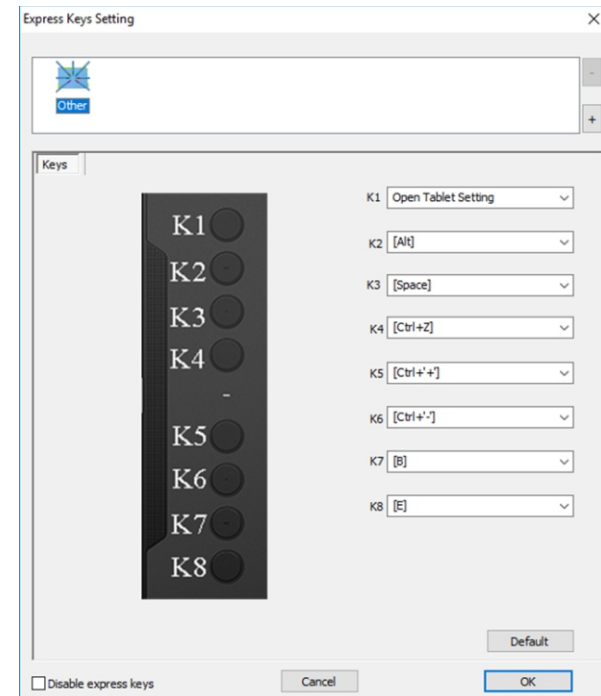


Image4-11: Express Keys

Mac

To open the Deco 01's driver settings, open Finder > Applications > PenTabletSetting.

Driver UI



Image4-12: Tablet Setting

1.1. Pen

In this tab, you may customize the functions of your stylus' barrel buttons, adjust pressure sensitivity, and test your pen pressure. Lighter sensitivity means that digital pressure level will rise with less applied physical pressure. Click "Default Button Setting" to revert to manufacturer settings.

Right & Left Hand Mode: The Deco 01 is set up for right-handed use by default. When switching to left-handed mode, be sure to rotate the actual physical tablet 180 degrees to place its shortcut keys on its opposite side.

Absolute (Pen) Mode: Standard tablet mode; Each point of the tablet's work area corresponds to an absolute point on your computer display.

Relative (Mouse) Mode: Mouse mode; The tablet's work area does not correspond to absolute points on your computer display and your pen works as a standard mouse.

Note:

Pen/Eraser Toggle

With the stylus in range of the Deco 01's working area, press the assigned barrel button to toggle between pen and eraser modes in compatible drawing software. The current mode will briefly be displayed on your monitor.

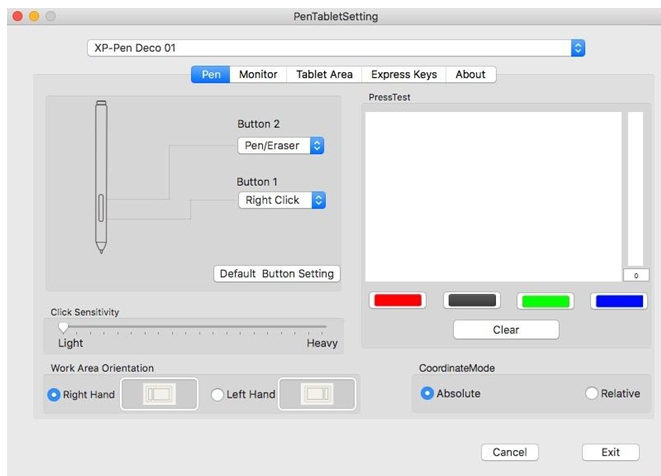


Image4-13: Pen

1.2. Monitor

The "Monitor" tab allows you to configure your tablet for use with single or dual monitors. The tablet can also be configured to use only a portion of your display.

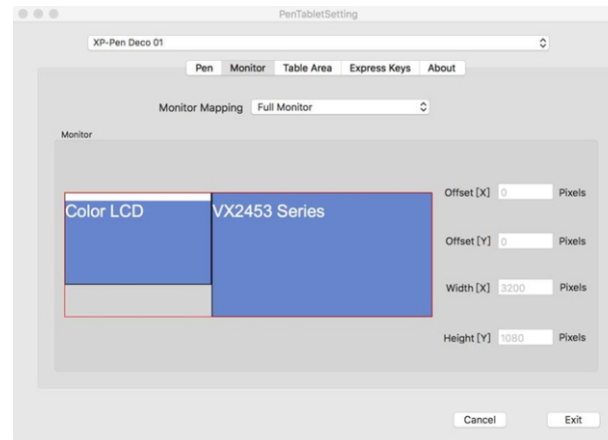


Image4-14: Full Monitor

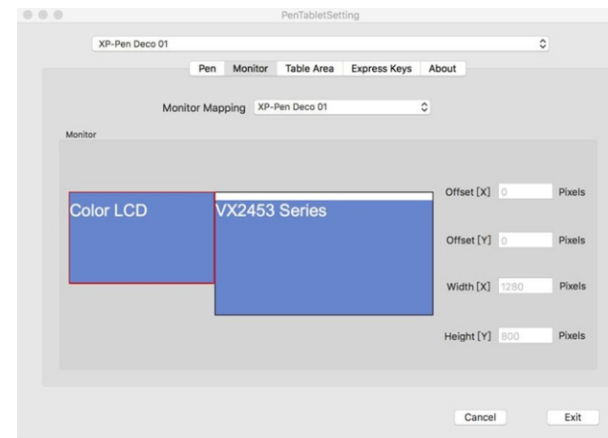


Image4-15: Single Monitor

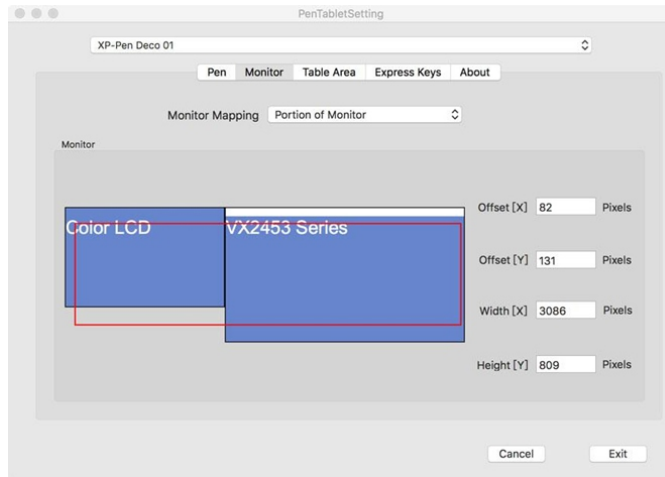


Image4-16: Single Monitor (Portion)

1.3. Tablet Area

You may adjust your tablet's on-screen working area in this tab. "Full Monitor" automatically selects the largest possible working area. "Screen Ratio" adjusts the tablet's on-screen working area to match your monitor's resolution.

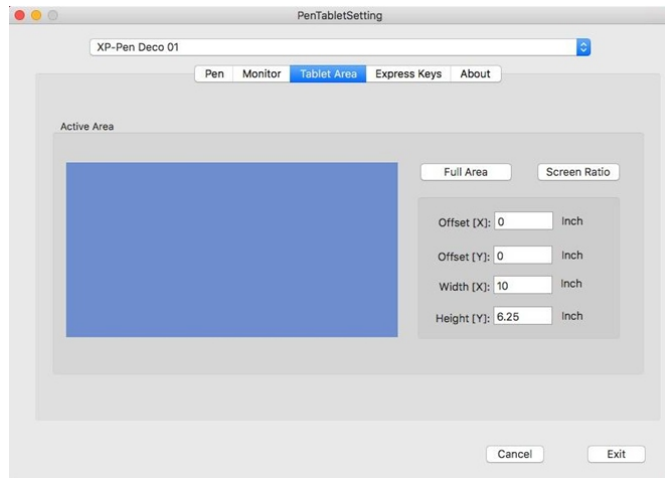


Image4-17: Table Area

1.4. Express Keys

In the Express Keys tab, you may choose your preferred functions for the Deco 01's shortcut keys. Use the "Reset Customer Defined" option to program custom keystrokes.

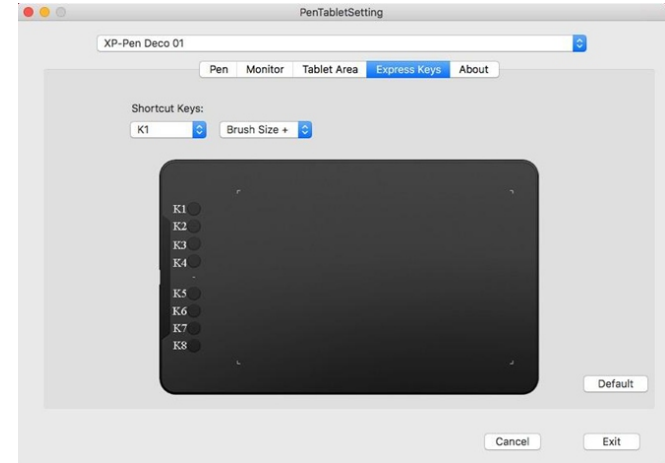


Image4-18: Express Keys

1.5. About

This tab displays the current version of your driver software.

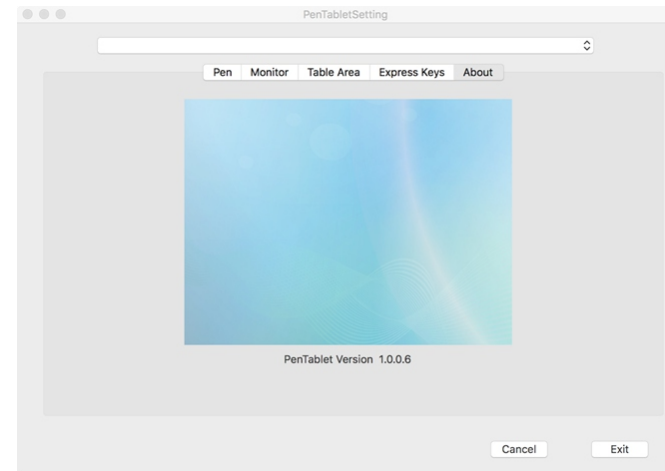


Image4-19: About

{V. Driver Uninstallation}

Windows

In the Start menu, open [Settings] → [Apps & features]. Find "Pentablet" and click "Uninstall." Follow the on-screen instructions.

Mac

Open [Finder] → [Application] → [Pen Tablet], then click "Uninstall Pen Tablet" and follow the on-screen instructions.

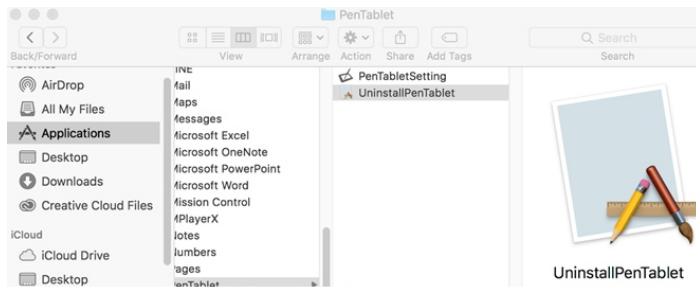


Image 5-1: Mac uninstall

NOTE :


When attempting to reinstall the Deco 01 driver, be sure to reboot your computer after the uninstallation is complete.

{VI. FAQ}

1. I can't use the stylus to control the cursor.

- Does the tablet's status indicator light come on when the stylus is in contact with the working area?
- Yes: Uninstall the Deco 01 driver. If its uninstaller will not run, run the driver's installer again, then uninstall. Reboot, then connect the tablet to your computer and test your stylus. If the cursor responds to your pen input, the tablet's hardware is functional. Reinstall the Deco 01 driver according to these steps (Windows):
- Download the tablet's latest driver from www.xp-pen.com, then extract the .zip contents to the desktop.
- Close all non-essential software and processes (Some software may use the wintab process and interfere with the driver installation. OneDrive in particular often causes issues; its system tray icon looks like two grey clouds.).
- Open C:\Windows. Using the "search" box near the top-right of the window, search for "WinTab32.dll" and delete any instances.
- Connect the tablet and power it on, then run the driver installation. Complete the installation, then reboot.
- If the tablet's system tray icon is not visible after rebooting:
- Open C:\Windows. Open File >> Folder and Search options >> View. Enable "Show hidden files and folders," then exit options. Search for "wtclient." Right-click both instances and "Run" each as Administrator. The driver icon should appear.

2. How do I know that the Deco 01 driver installed successfully?

After installing the driver, the Deco 01's driver icon  should be visible in your system tray on the bottom-right of your screen (Windows OS) and desktop. Pen input will control the cursor and pressure sensitivity will be functional in the driver.

3. How do I determine if a problem is software or hardware related?

- Connect and install the Deco 01 on a different computer. If the tablet functions properly on the new computer, you are experiencing a software issue—confirm that ALL tablet drivers (including the Deco 01) are uninstalled and removed from your computer, then reinstall the Deco 01.
- The Deco 01's indicator lights will help you determine if an issue is hardware-related. When functioning properly, the white status indicator light will light up when the stylus pen is in range of or touching the tablet's working area.